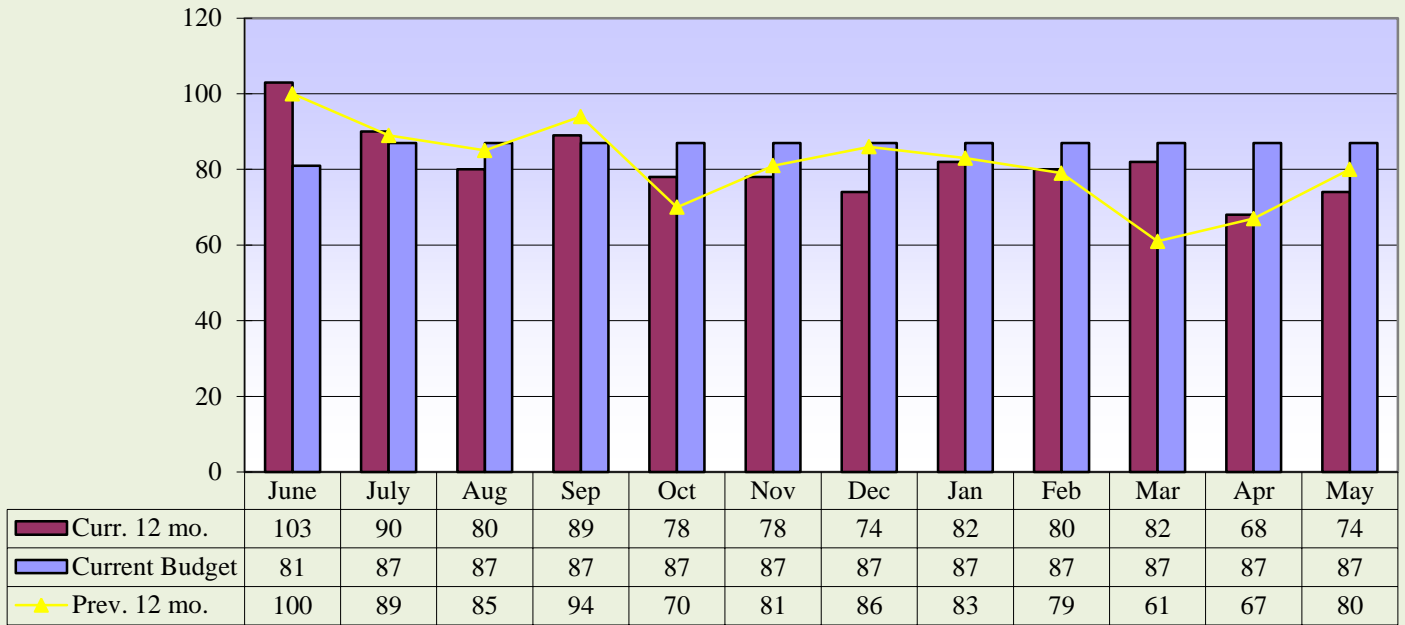


Memorial Hospital of Converse County
Financial and Statistical Packet
Table of Contents - May 31, 2016

	<u>Page #</u>
Admissions and Avg. IP Daily Census Graphs	1
Average Floor Census Breakdown Graph	2
Average Monthly Inpatient Admissions by Physician Graph	3
Average Length of Stay by Physician Graph	4
Payor Mix Comparisons and Emergency Room Visits Graphs	5
Total Surgeries and Orthopedic Surgeries Graphs	6
General and OB/GYN Surgery Graphs	7
Procedure Core Visits Graphs	8
Mammography Exams Graph	9
MRI and Cat Scan Graphs	10
Nuclear Medicine and Ultrasound Exams Graphs	11
Lab Procedures and Other X-Ray Graphs	12
Newborns and Net Days of Revenue in A/R Graphs	13
Respiratory and EKG Procedures Graphs	14
Hospital Revenue Graph	15
Income Statement and Budget Variance Report	16
Financial and Statistical Highlights	17
Statistics (Ratios - Productivity Indicators)	18
Balance Sheet	19
Cash Flow Statement	20

**Memorial Hospital of Converse County
Admissions and Avg. IP Daily Census
May 2016**

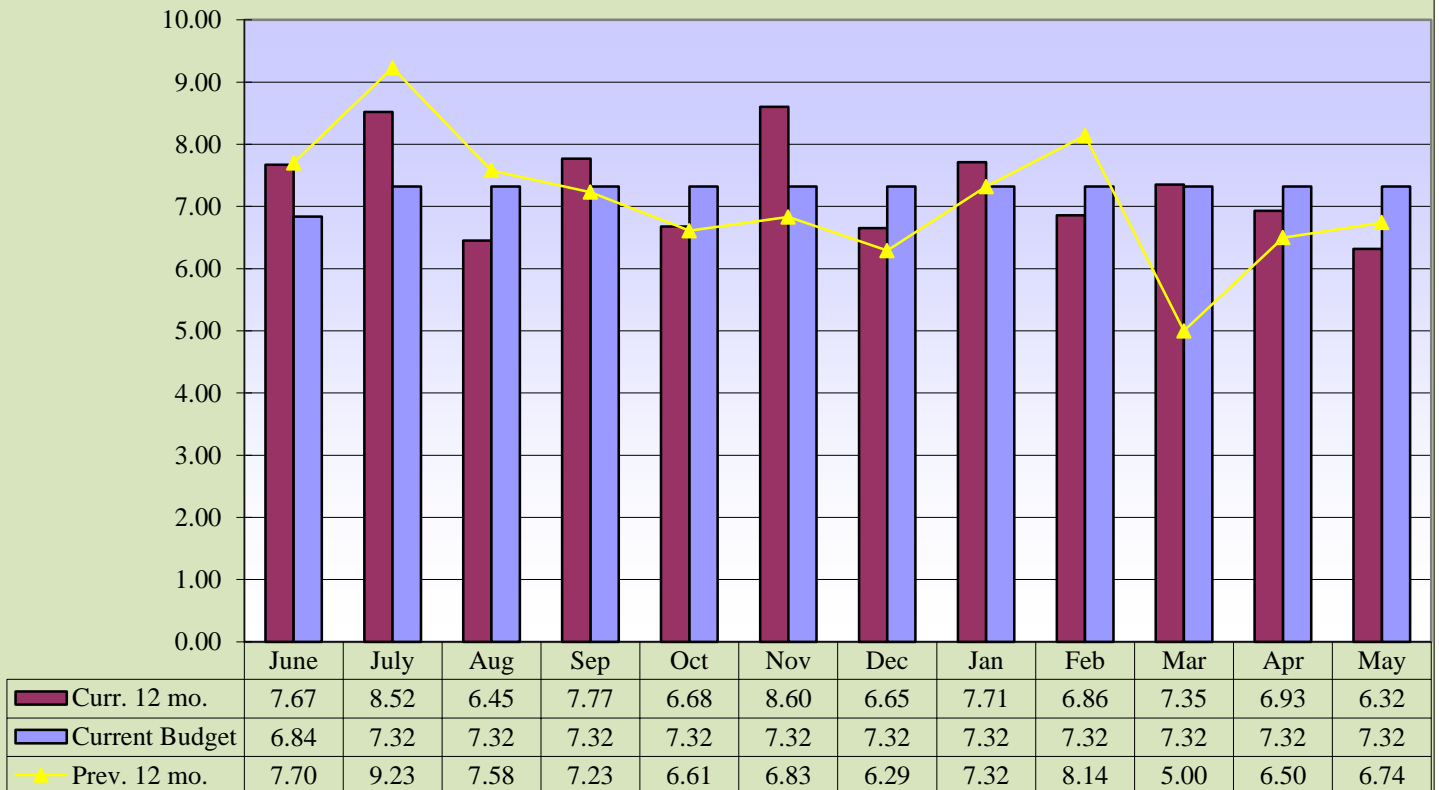
Admissions



Current 12 mo. avg. = 82

Previous 12 mo. avg. = 81

Average IP Daily Census

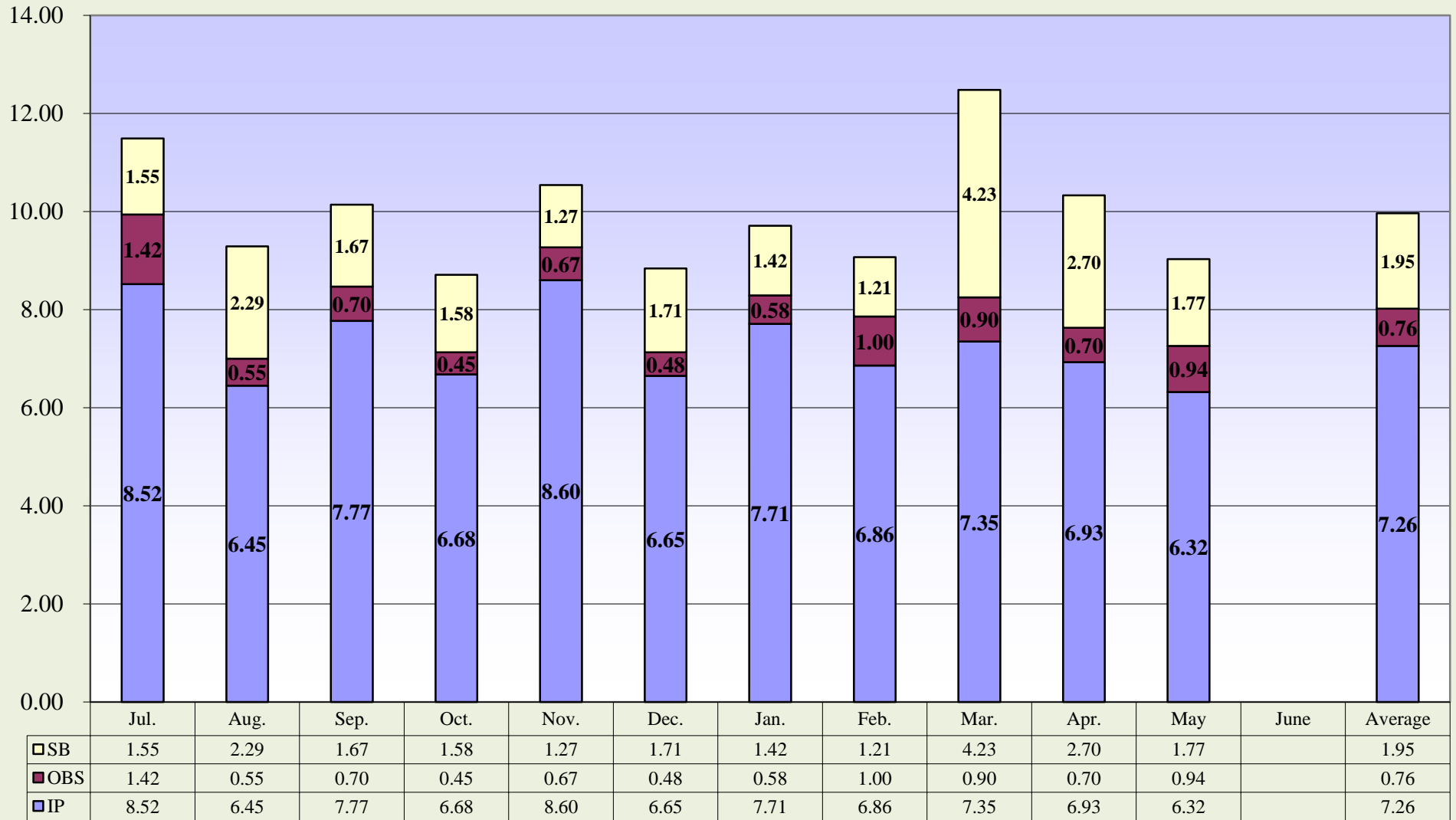


Curr. 12 mo. avg. = 7.29

Prev. 12 mo. avg. = 7.10

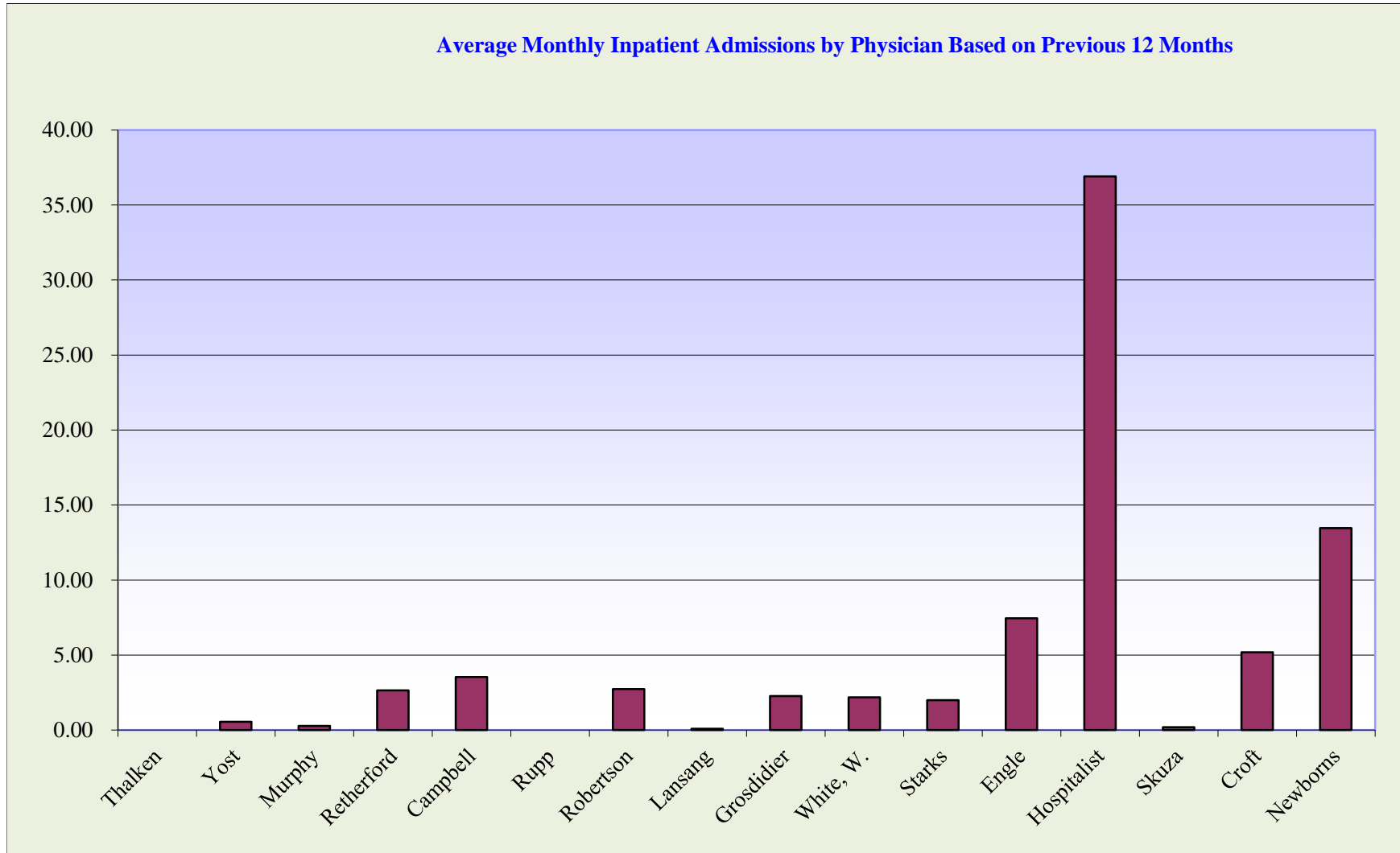
Memorial Hospital of Converse County
(FY 2016) Average Floor Census Breakdown
May 2016

(FY 2016) Average Floor Census Breakdown



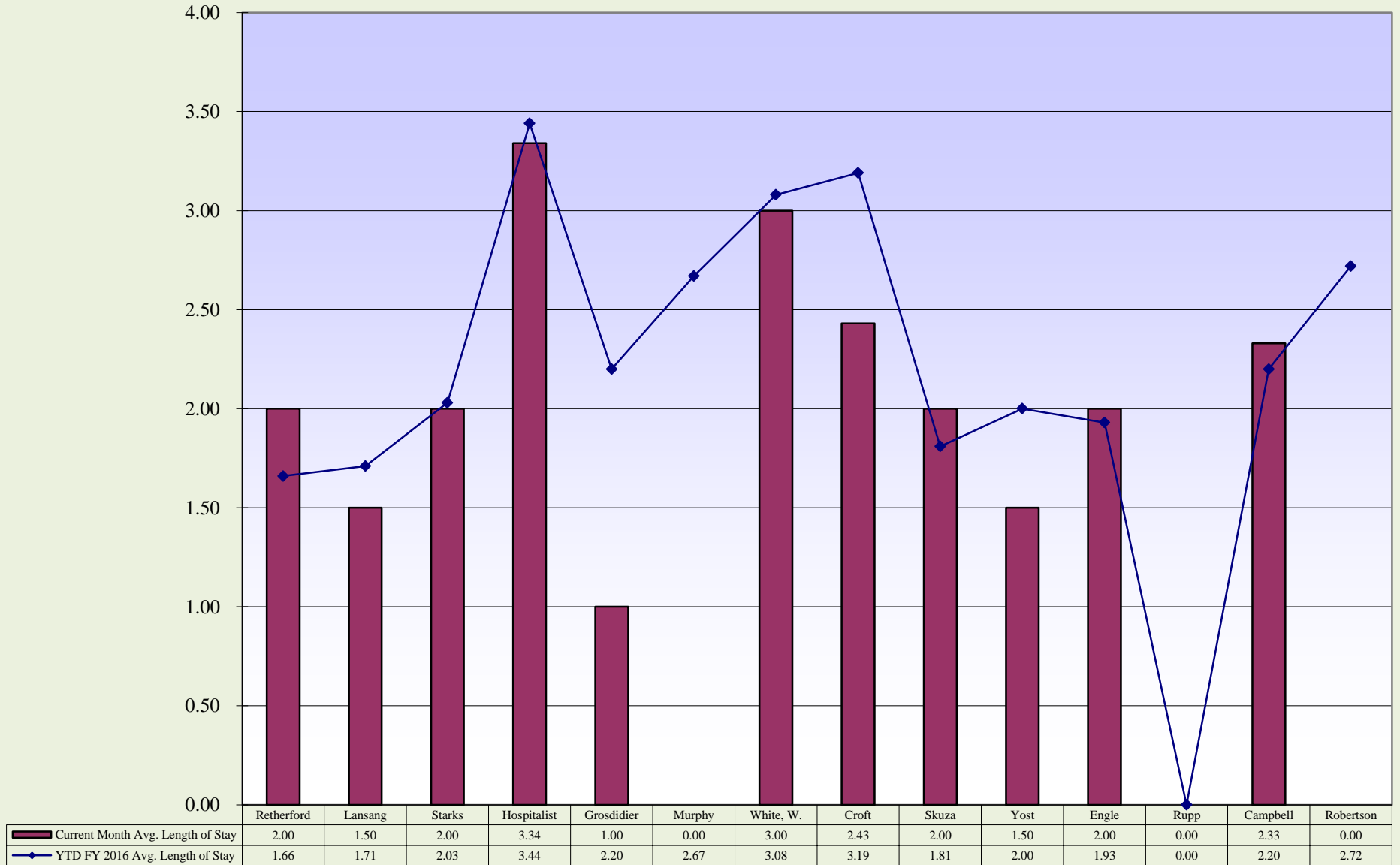
IP
 OBS
 SB

**Memorial Hospital of Converse County
Average Monthly Inpatient Admissions by Physician
May 2016**



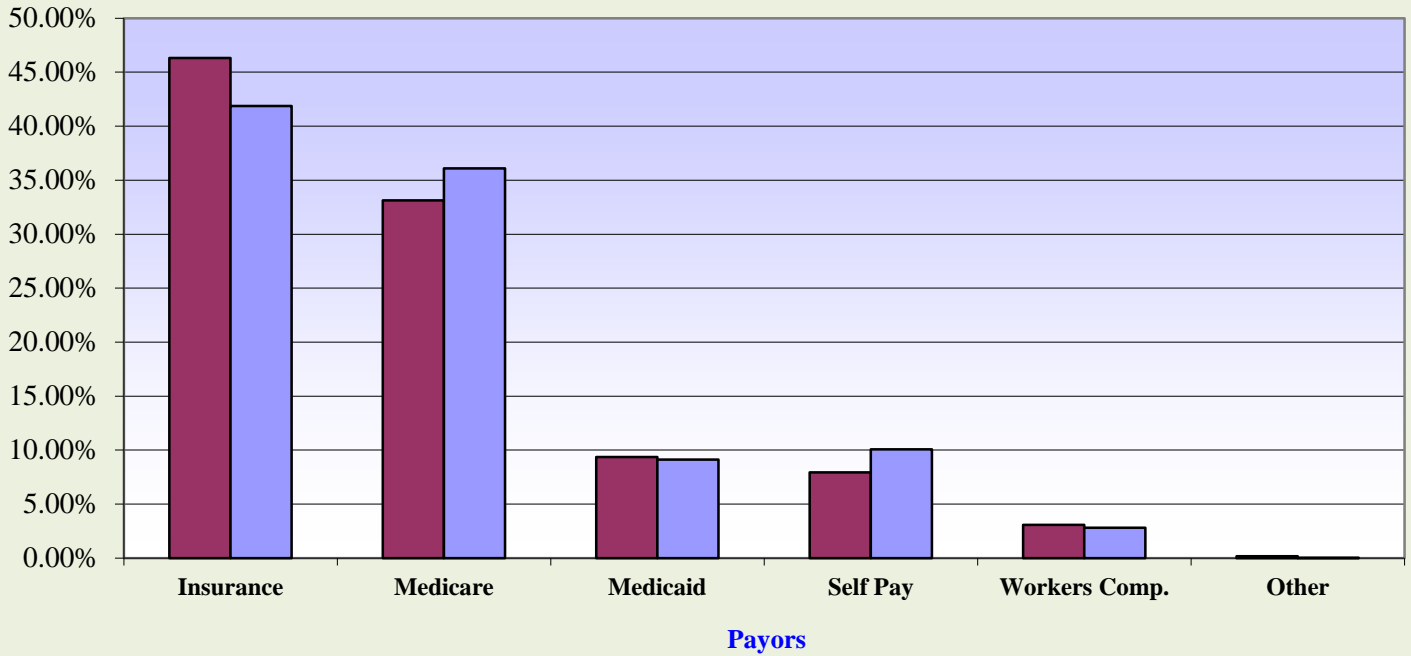
**Memorial Hospital of Converse County
Average Length of Stay by Physician
May 2016**

Average Length of Stay by Physician for Fiscal Year 2016



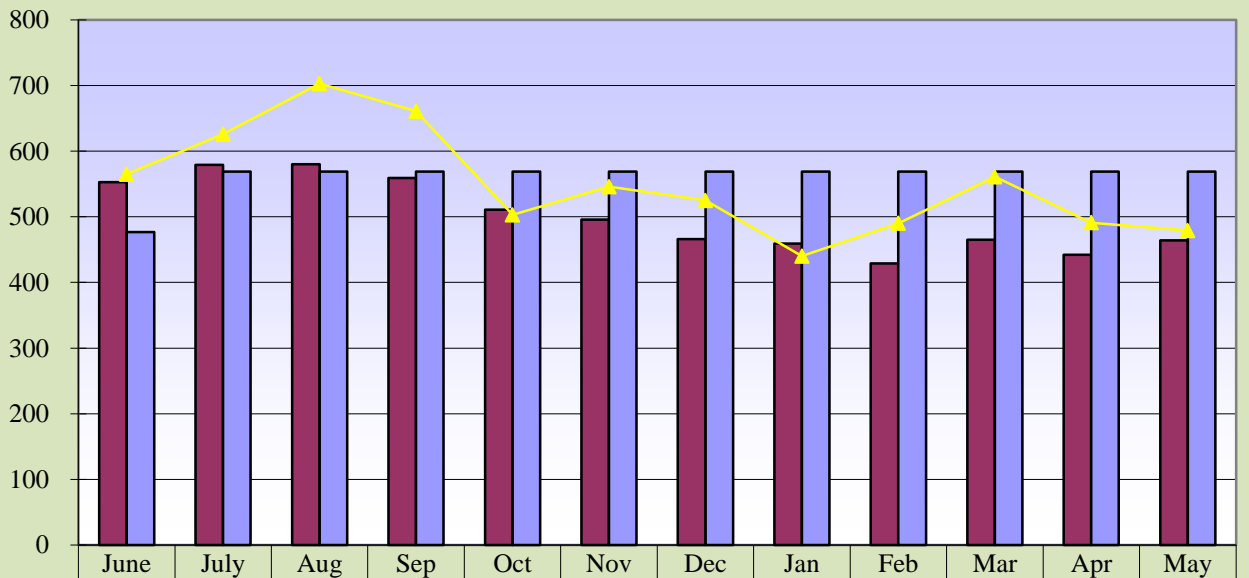
**Memorial Hospital of Converse County
Payor Mix Comparisons and ER Visits
May 2016**

Payor Mix Comparisons



■ Fiscal Year 2016 ■ Fiscal Year 2015

Emergency Room Visits



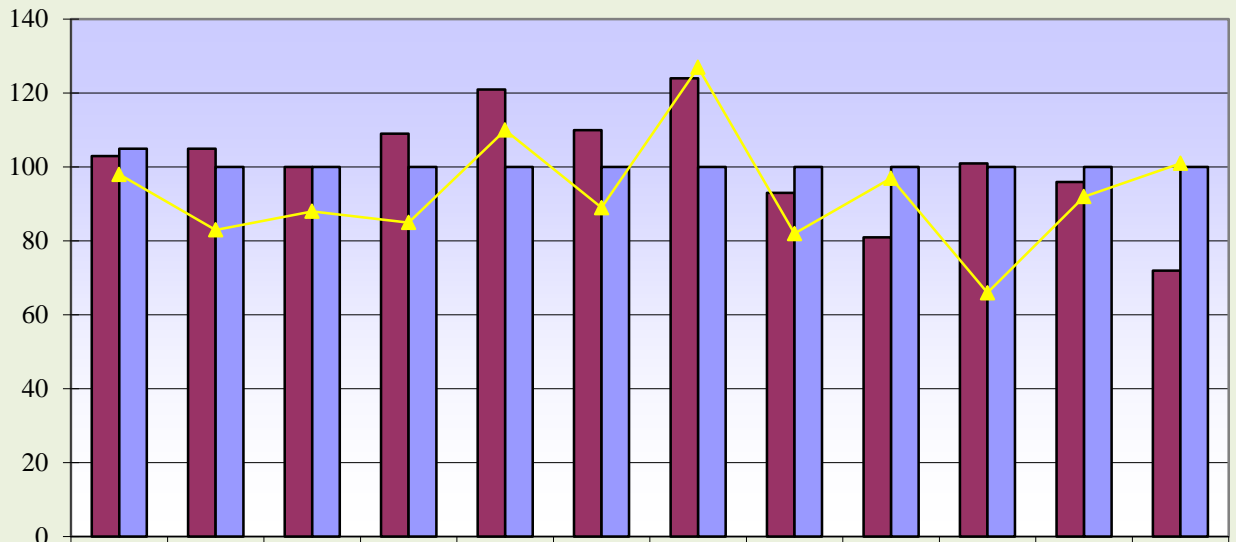
■ Curr. 12 mo.	553	579	580	559	511	496	466	459	429	465	442	464
■ Current Budget	477	569	569	569	569	569	569	569	569	569	569	569
▲ Prev. 12 mo.	565	626	703	661	503	546	525	440	490	561	491	479

Curr. 12 mo. avg. = 500

Prev. 12. mo. avg. = 549

**Memorial Hospital of Converse County
Total Surgeries and Orthopedic Surgeries
May 2016**

Total Surgeries

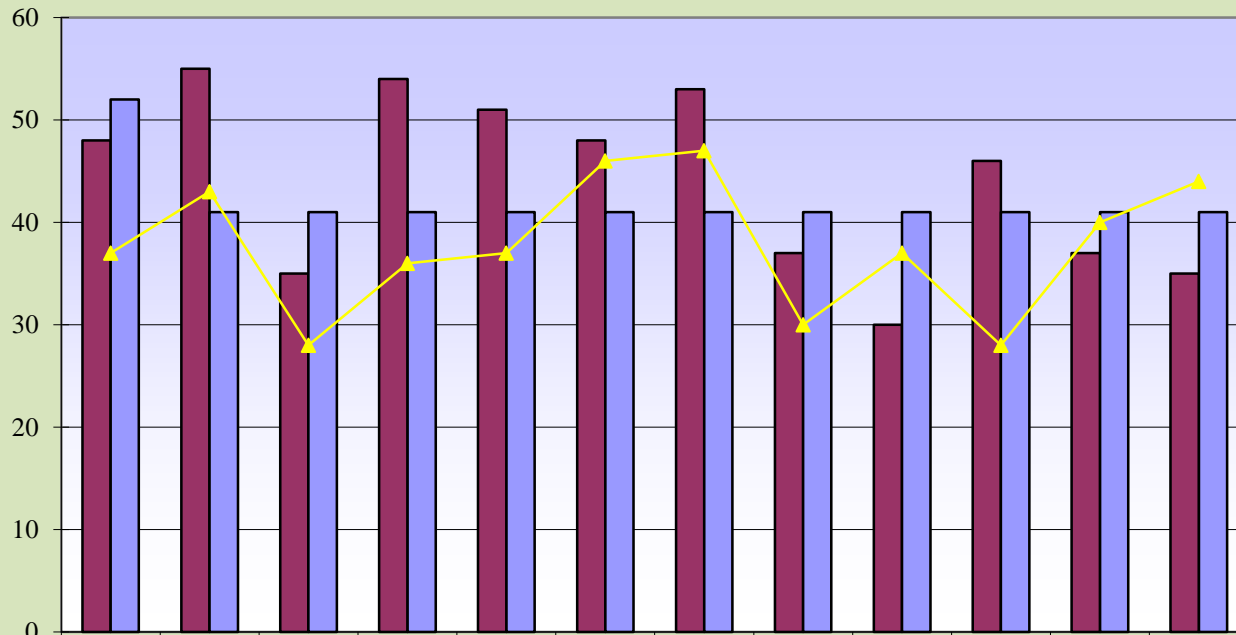


■ Curr. 12 mo.	103	105	100	109	121	110	124	93	81	101	96	72
■ Current Budget	105	100	100	100	100	100	100	100	100	100	100	100
▲ Prev. 12 mo.	98	83	88	85	110	89	127	82	97	66	92	101

Current 12 mo. avg. = 101

Previous 12 mo. avg. = 93

Orthopedic Surgeries



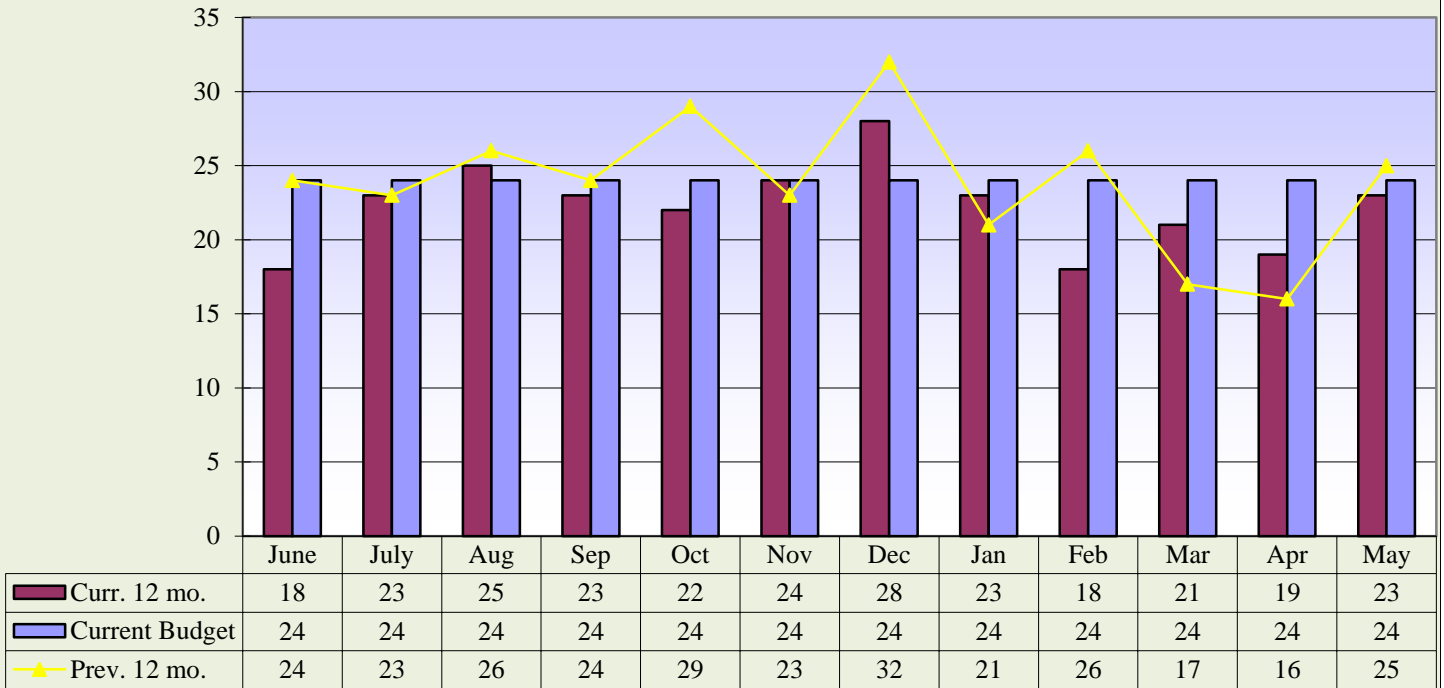
■ Curr. 12 mo.	48	55	35	54	51	48	53	37	30	46	37	35
■ Current Budget	52	41	41	41	41	41	41	41	41	41	41	41
▲ Prev. 12 mo.	37	43	28	36	37	46	47	30	37	28	40	44

Curr. 12 mo. avg. = 44

Prev. 12 mo. avg. = 38

**Memorial Hospital of Converse County
General and OB/GYN Surgeries
May 2016**

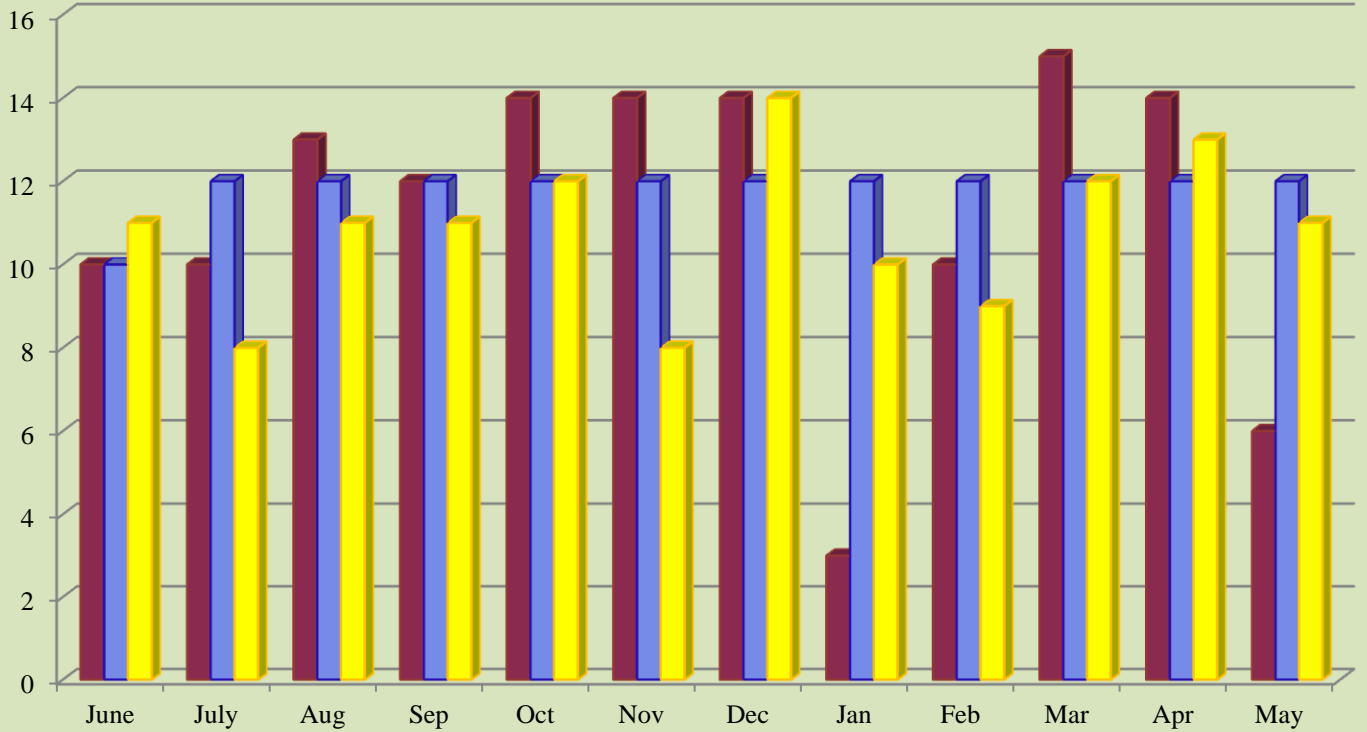
General Surgeries



Curr. 12 mo. avg. = 22

Prev. 12 mo. avg. = 24

OB/GYN Surgeries



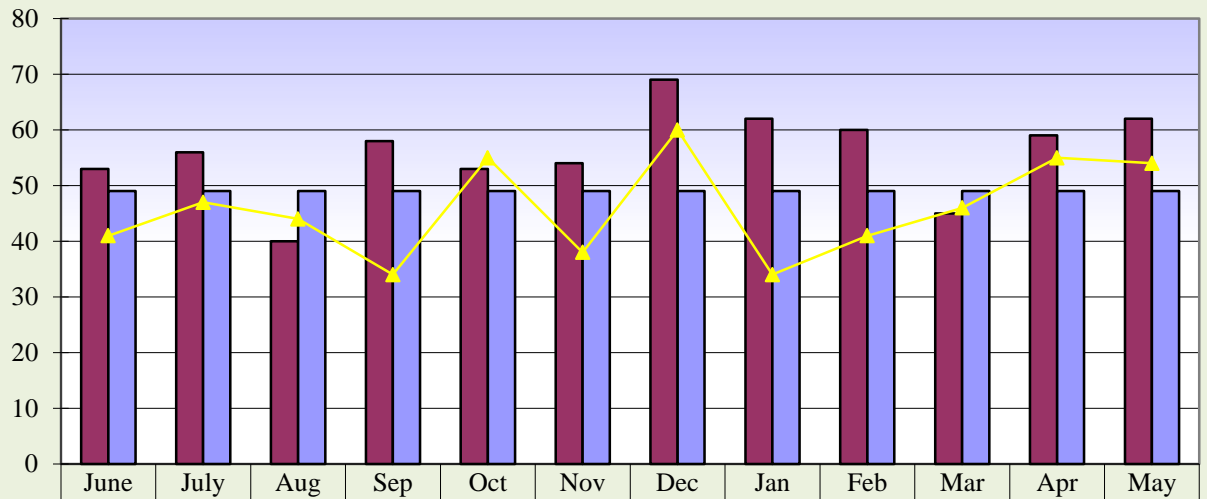
Curr. 12 mo. avg. = 11

Prev. 12 mo. avg. = 11

■ Curr. 12 mo.
 ■ Current Budget
 ■ Prev. 12 mo.

**Memorial Hospital of Converse County
Procedure Core Visits
May 2016**

Procedure Core Visits

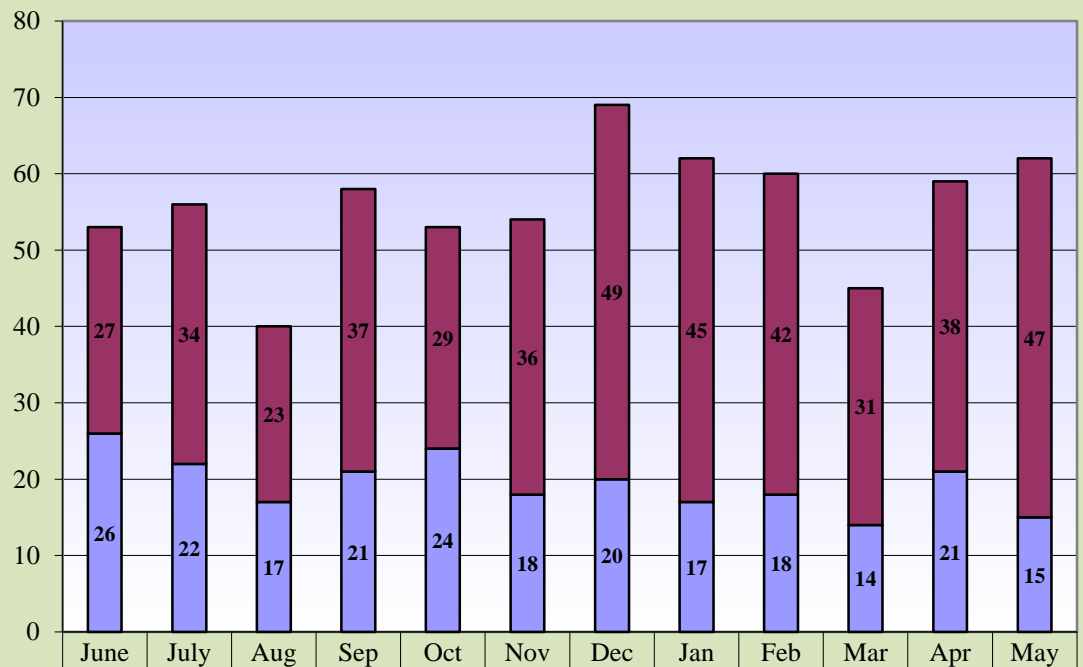


Curr. 12 mo.	53	56	40	58	53	54	69	62	60	45	59	62
Current Budget	49	49	49	49	49	49	49	49	49	49	49	49
Prev. 12 mo.	41	47	44	34	55	38	60	34	41	46	55	54

Curr. 12 mo. avg. = 56

Prev. 12 mo. avg. = 46

Procedure Core Visit Types



Curr. 12 mo. Scopes	27	34	23	37	29	36	49	45	42	31	38	47
Curr. 12 mo. Minor Procedures	26	22	17	21	24	18	20	17	18	14	21	15

**Memorial Hospital of Converse County
Mammography Exams
May 2016**

Mammography Exams

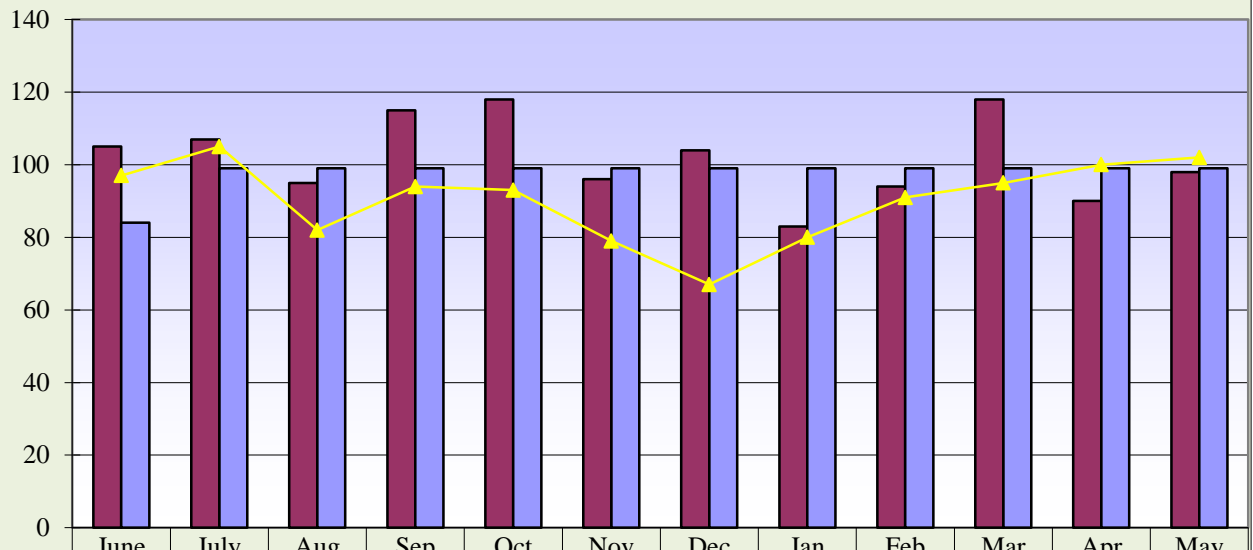


Curr. 12 mo. avg. = 105

Prev. 12 mo. avg. = 88

**Memorial Hospital of Converse County
MRI & Cat Scans
May 2016**

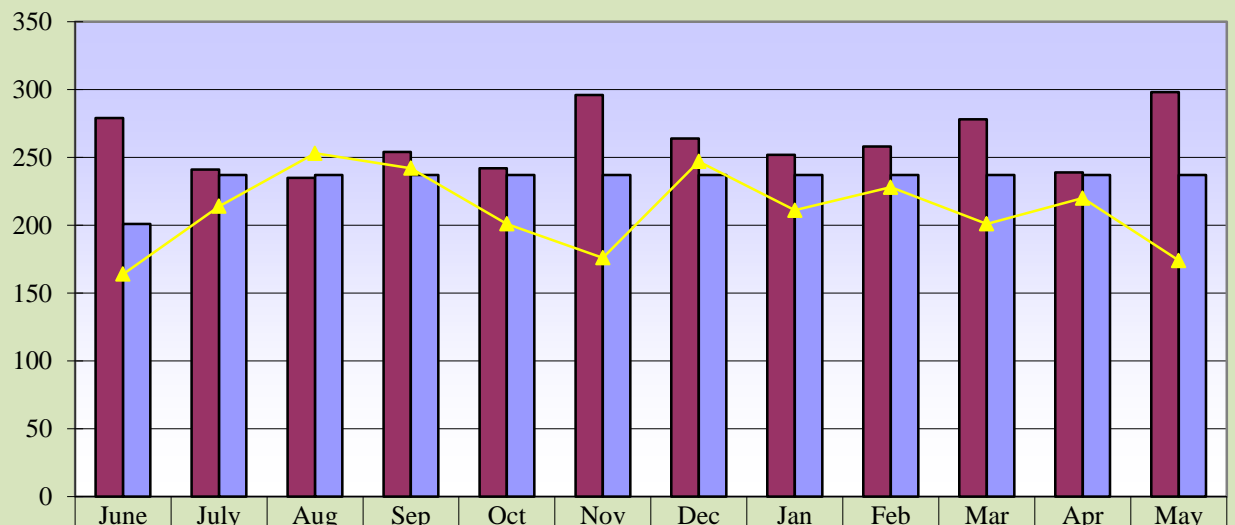
MRI Exams



Curr. 12 mo. avg. = 102

Prev. 12 mo. avg. = 90

CT Exams

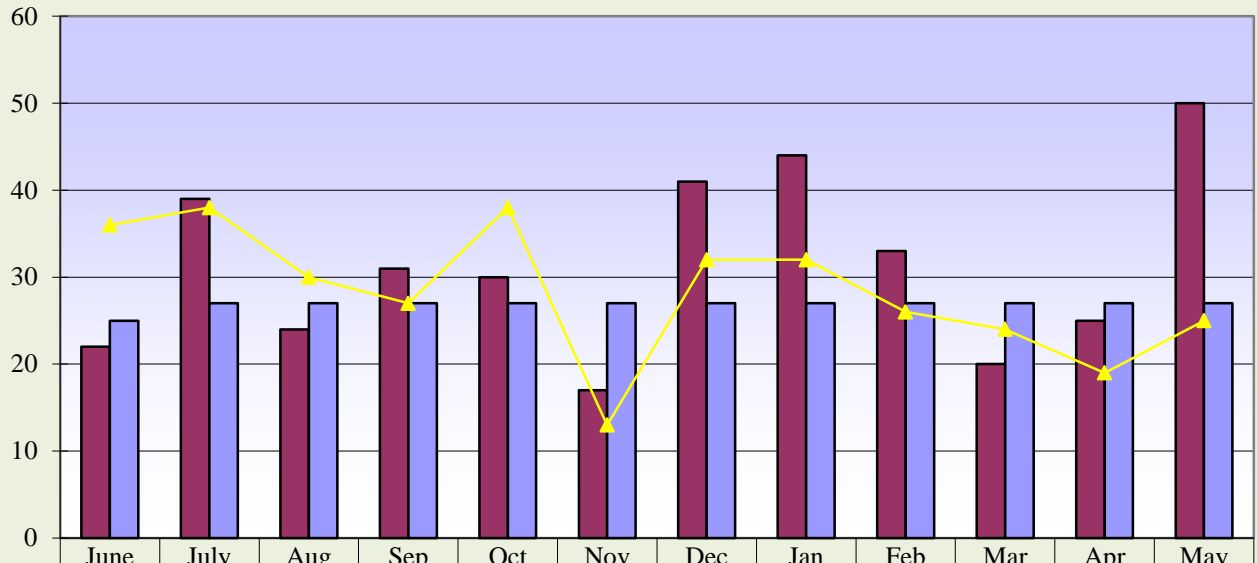


Curr. 12 mo. avg. = 261

Prev. 12 mo. avg. = 211

**Memorial Hospital of Converse County
Nuclear Med and Ultrasound Exams
May 2016**

Nuclear Medicine Exams

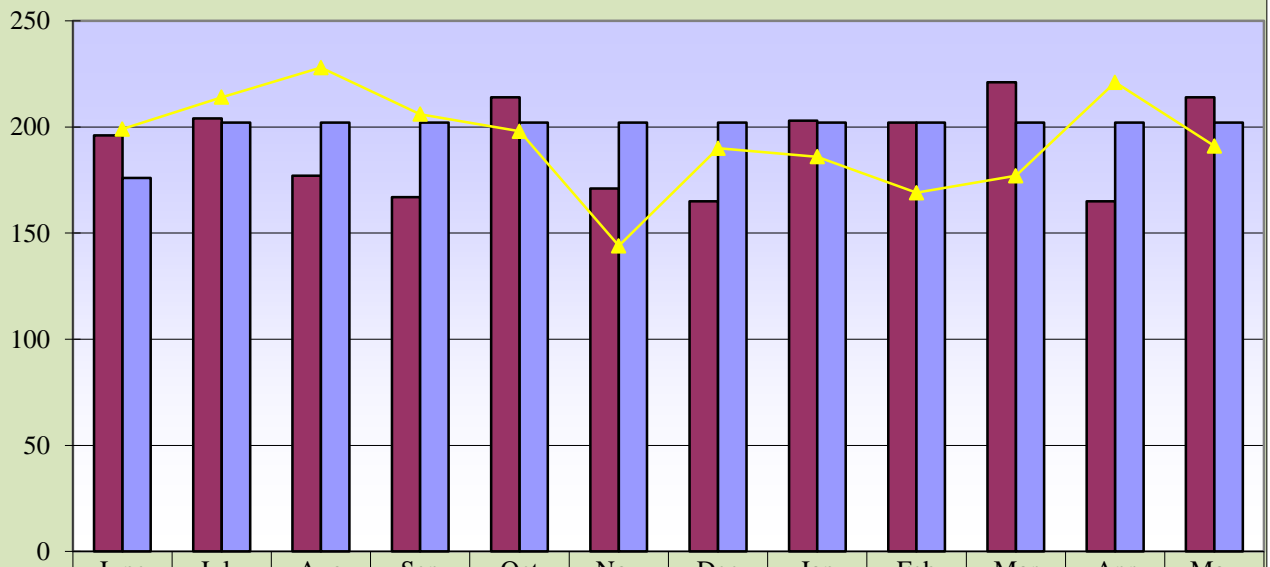


	June	July	Aug	Sep	Oct	Nov	Dec	Jan	Feb	Mar	Apr	May
Curr. 12 mo.	22	39	24	31	30	17	41	44	33	20	25	50
Current Budget	25	27	27	27	27	27	27	27	27	27	27	27
Prev. 12 mo.	36	38	30	27	38	13	32	32	26	24	19	25

Curr. 12 mo. avg = 31

Prev. 12 mo. avg. = 28

Ultrasound Exams



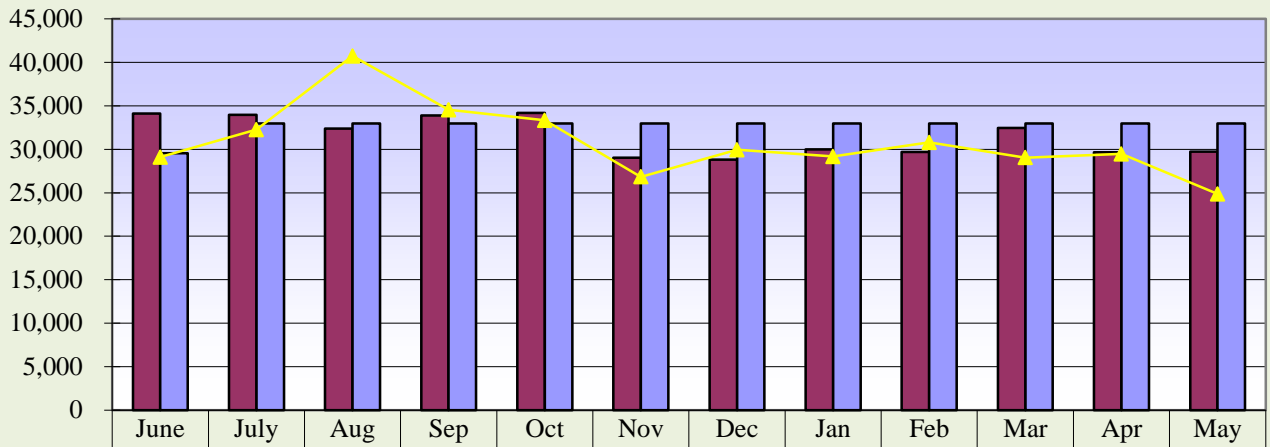
	June	July	Aug	Sep	Oct	Nov	Dec	Jan	Feb	Mar	Apr	May
Curr. 12 mo.	196	204	177	167	214	171	165	203	202	221	165	214
Current Budget	176	202	202	202	202	202	202	202	202	202	202	202
Prev. 12 mo.	199	214	228	206	198	144	190	186	169	177	221	191

Curr. 12 mo. avg. = 192

Prev. 12 mo. avg. = 194

**Memorial Hospital of Converse County
Lab Procedures and Other X-Ray Exams
May 2016**

Lab Procedures

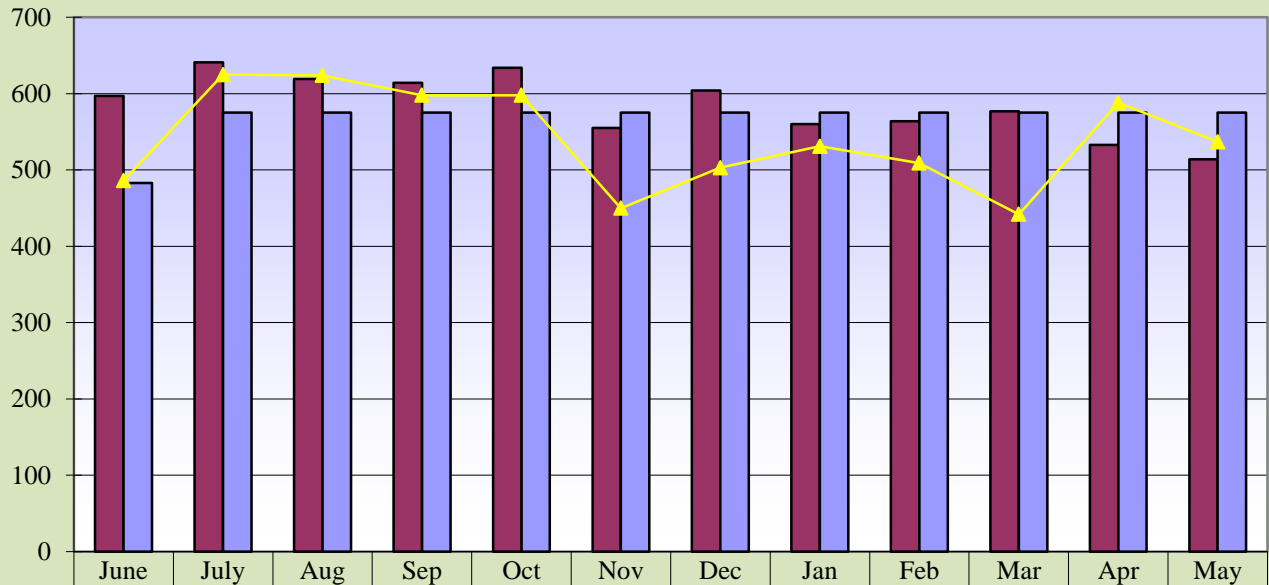


Curr. 12 mo.	34,102	33,960	32,375	33,895	34,186	29,028	28,811	29,995	29,694	32,443	29,662	29,729
Current Budget	29,531	32,981	32,981	32,981	32,981	32,981	32,981	32,981	32,981	32,981	32,981	32,981
Prev. 12 mo.	29,091	32,256	40,728	34,548	33,336	26,829	29,939	29,174	30,794	29,041	29,470	24,854
—												

Curr. 12 mo. avg. = 31,490

Prev. 12 mo. avg. = 30,838

Total Other X-Ray Exams



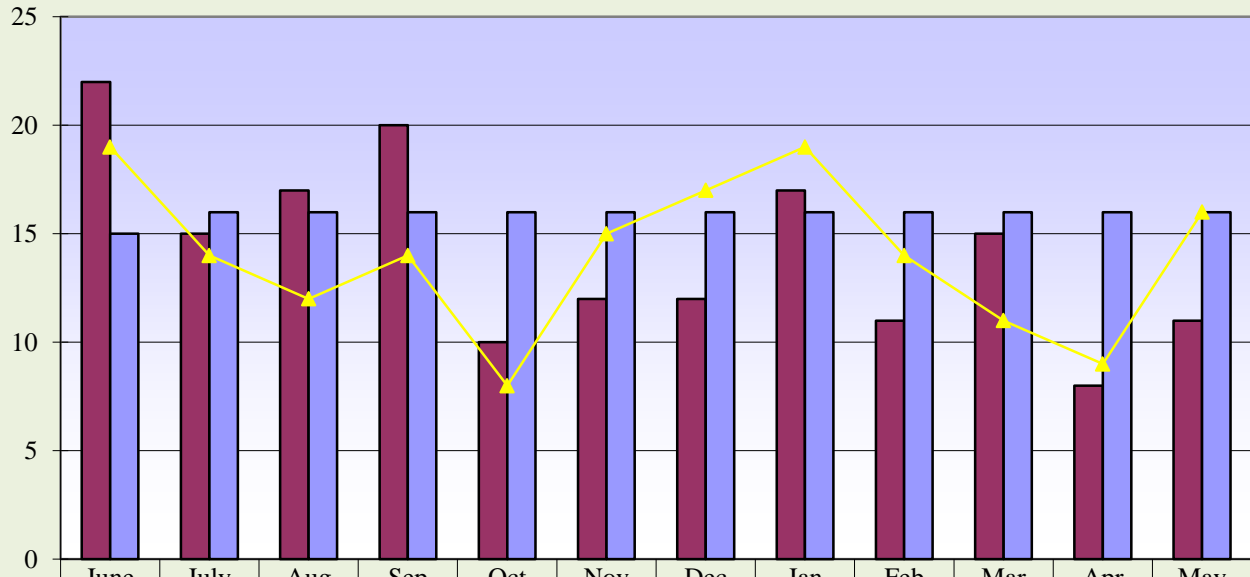
Curr. 12 mo.	597	641	619	614	634	555	604	560	564	577	533	514
Current Budget	483	575	575	575	575	575	575	575	575	575	575	575
Prev. 12 mo.	486	625	624	598	598	450	503	531	509	442	588	537

Curr. 12 mo. avg. = 584

Prev. 12 mo. avg. = 541

**Memorial Hospital of Converse County
Newborns and Net A/R Days
May 2016**

Newborns

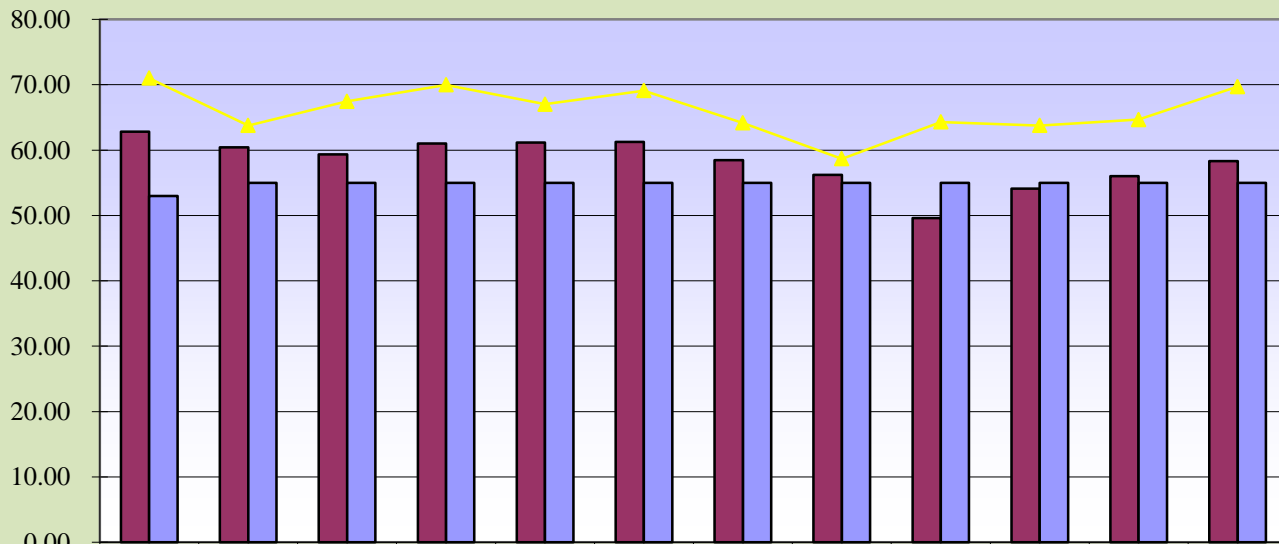


Curr. 12 mo.	22	15	17	20	10	12	12	17	11	15	8	11
Current Budget	15	16	16	16	16	16	16	16	16	16	16	16
Prev. 12 mo.	19	14	12	14	8	15	17	19	14	11	9	16

Curr. 12 mo. avg. = 14

Prev. 12 mo. avg. = 14

Net Days of Revenue in A/R

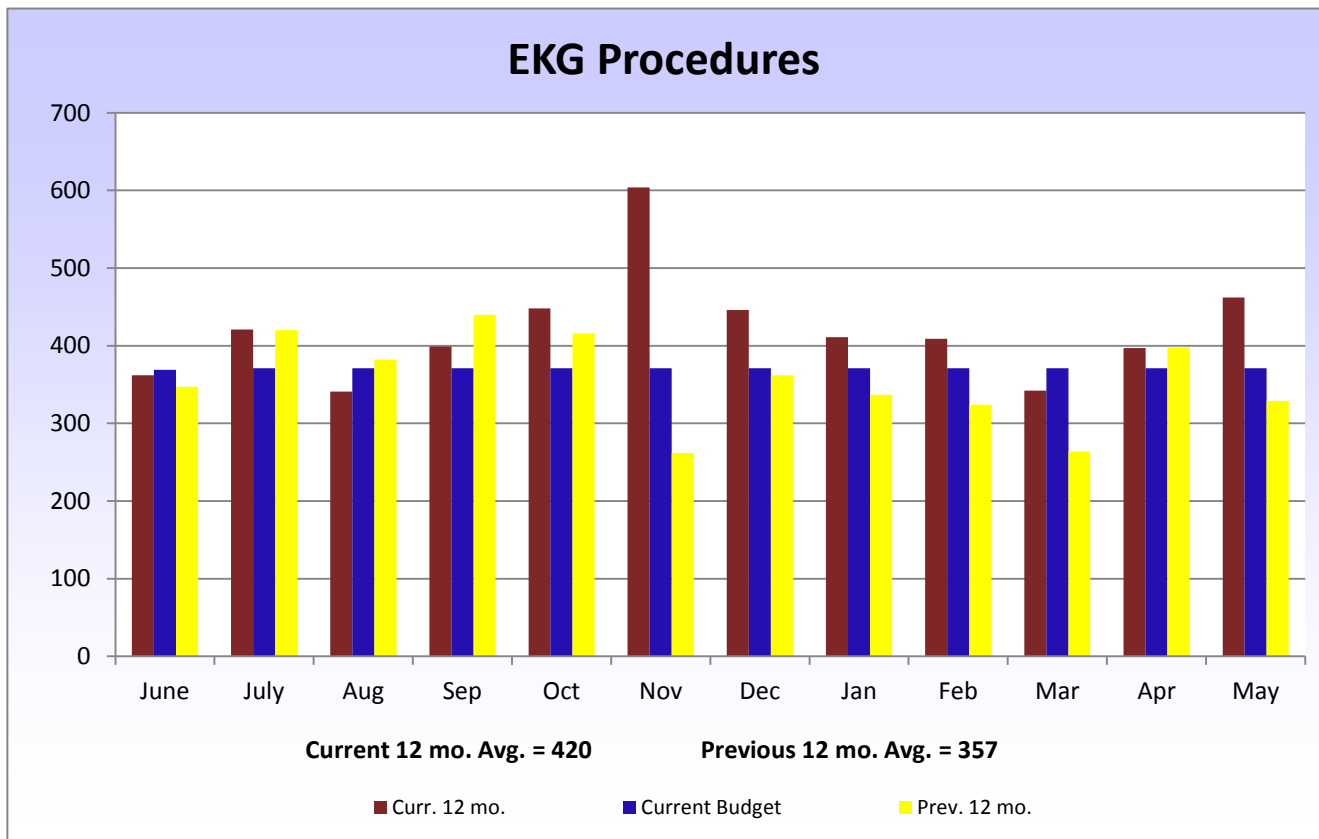
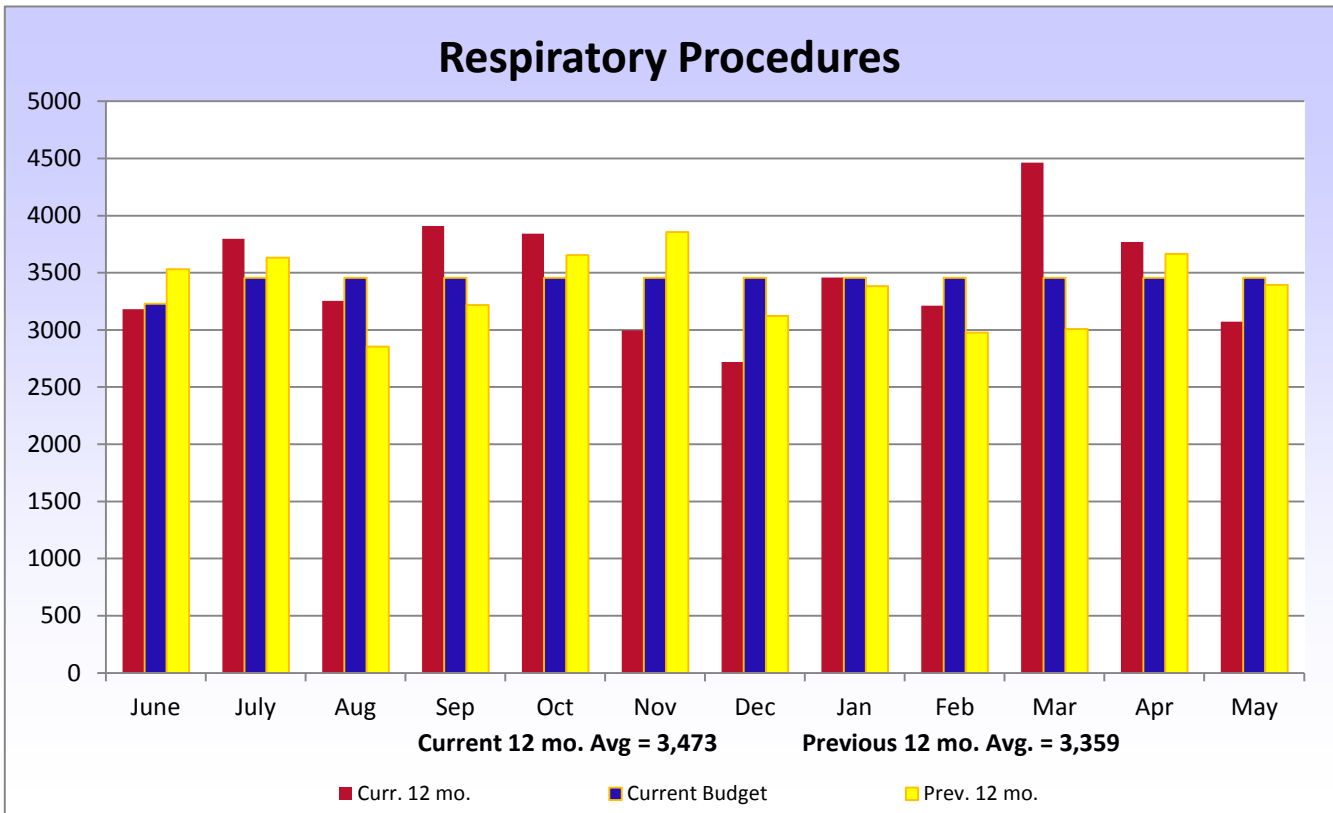


Curr. 12 mo.	62.80	60.41	59.35	61.01	61.16	61.26	58.46	56.22	49.59	54.12	56.02	58.31
Current Budget	53.00	55.00	55.00	55.00	55.00	55.00	55.00	55.00	55.00	55.00	55.00	55.00
Prev. 12 mo.	71.01	63.76	67.46	69.98	67.01	69.09	64.15	58.68	64.29	63.76	64.67	69.70

Curr. 12 mo. avg. = 58.23

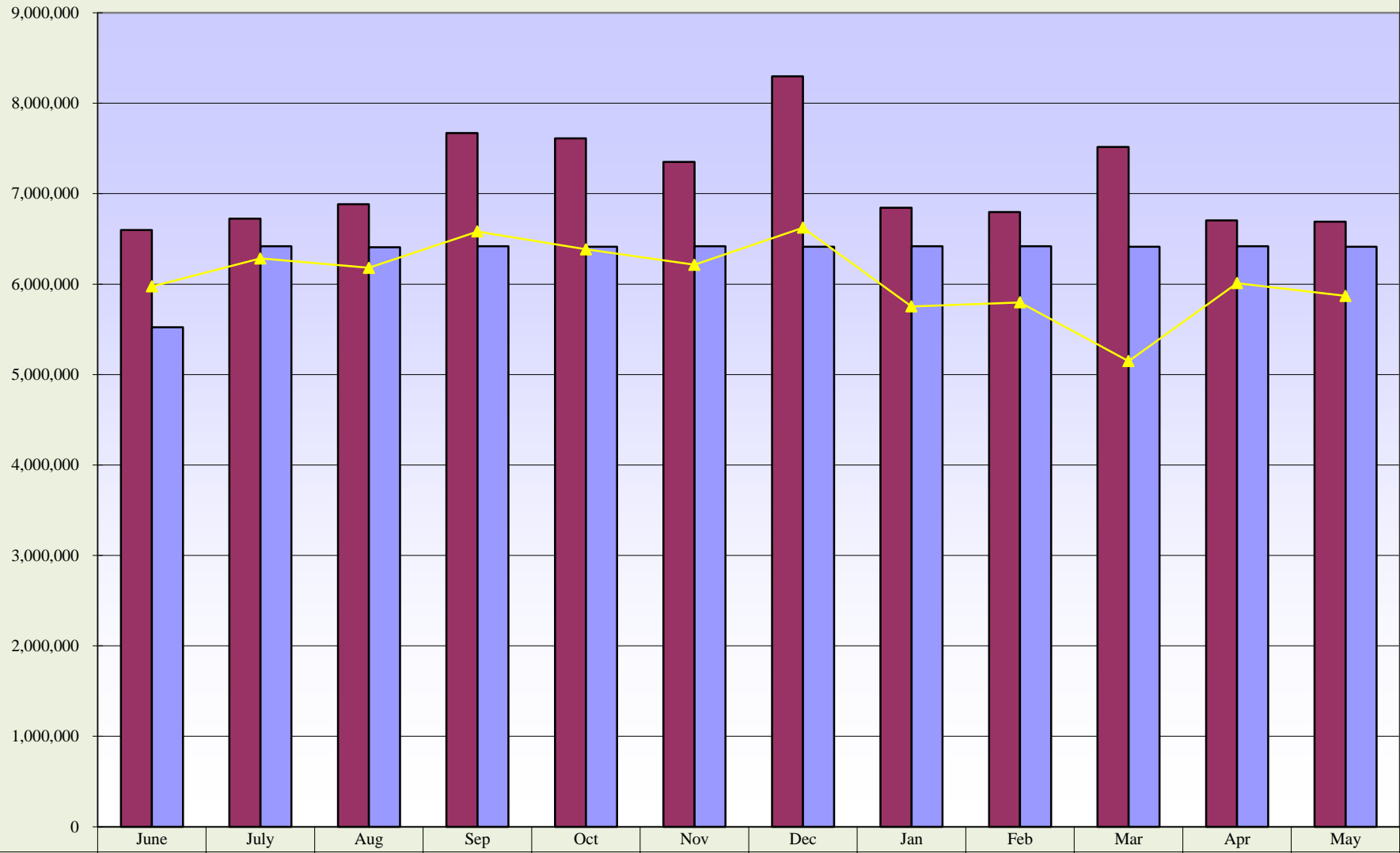
Prev. 12 mo. avg. = 66.13

Memorial Hospital of Converse County
 Respiratory and EKG Procedures
 May 2016



**Memorial Hospital of Converse County
Hospital Patient Revenues
May 2016**

Hospital Patient Revenues



Curr. 12 mo. avg. = \$7,140,922

Prev. 12 mo. avg. = \$6,068,439

**Memorial Hospital of Converse County
Income Statement Summary
Budget Variance Report**

Current Month			Year to Date			Prior Year YTD		
May 2016	Budget	Variance Amount	May	YTD Thru May 2016	YTD Budget	Variance Amount	YTD Thru May 2015	Change From Prior YTD
			<u>Patient Revenue</u>					
\$1,651,001	\$1,705,798	(\$54,797)	Inpatient	\$20,646,301	\$18,763,792	\$1,882,509	\$16,859,406	\$3,786,895
3,836,233	3,322,681	513,552	Outpatient	42,919,230	36,559,603	6,359,627	31,623,220	11,296,010
1,203,910	1,385,495	(181,585)	Physician Clinics	15,526,507	15,244,492	282,015	18,364,712	(2,838,205)
\$6,691,145	\$6,413,974	\$277,171	Total Patient Revenue	\$79,092,038	\$70,567,887	\$8,524,151	\$66,847,338	\$12,244,700
			<u>Deductions From Revenue</u>					
1,780,212 **	515,950	1,264,262	Medicare	9,610,110 **	5,744,225	3,865,885	5,481,589	4,128,521
465,195	317,261	147,934	Medicaid	4,816,418	3,532,210	1,284,208	3,361,078	1,455,340
140,390	55,163	85,227	Worker's Compensation	1,386,865	606,792	780,073	1,052,174	334,691
623,109	556,617	66,492	Other Contractuals	7,470,416	6,196,957	1,273,459	5,492,074	1,978,342
161,483	150,322	11,161	Other	1,849,958	1,673,618	176,340	1,458,736	391,222
\$3,170,389	\$1,595,313	\$1,575,076	Total Deductions	\$25,133,767	\$17,753,802	\$7,379,965	\$16,845,651	\$8,288,116
3,520,756	4,818,661	(1,297,905)	Net Patient Revenue	53,958,271	52,814,085	1,144,186	50,001,687	3,956,584
150,600	90,255	60,345	<u>Other Operating Revenue</u>	1,035,469	992,840	42,629	1,345,311	(309,842)
\$3,671,356	\$4,908,916	(\$1,237,560)	Total Operating Revenue	\$54,993,741	\$53,806,925	\$1,186,816	\$51,346,998	\$3,646,743
			<u>Operating Expenses</u>					
2,050,524	2,203,048	(152,524)	Salaries & Wages	25,520,809	24,526,877	993,932	24,645,897	874,912
623,059	494,229	128,830	Benefits	6,258,747	5,436,525	822,222	5,667,868	590,879
520,474	462,502	57,972	Supplies	6,220,590	5,087,501	1,133,089	5,372,765	847,825
86,011	99,713	(13,702)	Lease & Rentals	928,131	1,096,849	(168,718)	985,361	(57,230)
113,031	80,807	32,224	Other Expenses	1,090,411	889,161	201,250	882,079	208,332
1,284	2,500	(1,216)	Legal	19,975	27,500	(7,525)	15,035	4,940
24,974	19,980	4,994	Travel & Education	301,864	219,990	81,874	246,554	55,310
106,697	108,233	(1,536)	Maintenance & Repair	1,216,008	1,190,567	25,441	1,197,889	18,119
6,023	38,834	(32,811)	Physician Fees	272,017	427,167	(155,150)	417,883	(145,866)
11,819	16,666	(4,847)	Interest	116,861	183,333	(66,472)	507,695	(390,834)
61,034	62,914	(1,880)	Professional Fees	624,753	692,017	(67,264)	668,845	(44,092)
84,076	122,271	(38,195)	Purchased Services	1,389,623	1,345,032	44,591	1,355,800	33,823
32,924	35,582	(2,658)	Insurance	364,692	391,416	(26,724)	383,790	(19,098)
42,825	47,980	(5,155)	Utilities	527,442	527,737	(295)	523,249	4,193
367,859	425,792	(57,933)	Depreciation	4,038,619	4,683,712	(645,093)	4,036,246	2,373
542,121	522,586	19,535	Indigent Care	7,778,735 *	5,748,441	2,030,294	5,445,206	2,333,529
\$4,674,734	\$4,743,637	(\$68,903)	Total Expenses	\$56,669,276	\$52,473,825	\$4,195,451	\$52,352,162	\$4,317,114
(1,003,378)	165,279	(1,168,657)	Operating Income (Loss)	(1,675,535)	1,333,100	(3,008,635)	(1,005,164)	(670,371)
			<u>Non-Operating Revenue</u>					
112,722	112,500	222	County - Indigent Care Reimbursement	1,262,879	1,237,500	25,379	962,500	300,379
37,500	37,500	0	County - Ambulance Reimbursement	412,500	412,500	0	562,500	(150,000)
13,594	31,834	(18,240)	Other Non-Operating	326,022	350,167	(24,145)	350,691	(24,669)
0	0	0	Non-Operating Expense	0	0	0	0	0
(\$839,562)	\$347,113	(\$1,186,675)	Net Income/(Loss)	\$325,865 **	\$3,333,267	(\$3,007,402)	\$870,527	(\$544,662)

**Memorial Hospital of Converse County
Financial and Statistical Highlights
May 2016**

Patient Volumes	<u>Page #</u>
IP Daily Census.....	At 6.32 down 0.42 from May 2015 - down 0.61 from April 2016 1-2
Surgeries.....	At 72 down 29 from May 2015 - down 24 from April 2016 6-7
Radiology Exams.....	At 1,269 up 168 from May 2015 - up 115 from April 2016 9-12
Laboratory Tests.....	At 29,729 up 4,875 from May 2015 - up 67 from April 2016 12
Emer. Rm. Visits.....	At 464 down 15 from May 2015 - up 22 from April 2016 5

Income Statement

Gross Patient Revenue for the month was \$6,600,000 compared to \$5,869,000 last May and \$6,700,000 last month. Net Income for May is **(\$839,000)** compared to **(\$158,000)** last year and **(\$779,000)** last month. 15

Monthly Revenue - over budget by \$277,000

The departments that are under budget by \$10,000 or more are as follows:

Med Surg - 35,000	CRNA's - 46,000
Health Management - 15,000	
Physical Therapy - 10,000	
Ortho Surgery - 19,000	
Surgery - 242,000	

Deductions From Revenue - Over budget by \$1,575,000

Monthly Expense Variances - Under budget by \$68,000

<p><u>Supplies - 57,000</u></p> <p>Pharmacy Drugs - 15,000</p> <p>Surgery - 31,000</p> <p>Physician Services - 10,000</p> <p>IS - 17,000</p> <p><u>Other - 32,000</u></p> <p>Practitioners Collection - 7,000</p> <p>Business Office Collection - 9,000</p> <p>Public Relations Dues, Books - 26,000</p>	<p><u>Benefits - 128,000</u></p> <p><u>Travel & Education - 4,900</u></p> <p>Physician Education - 2,200</p> <p>Surgical Services - 4,000</p> <p>Administration - 3,000</p> <p>IS - 2,000</p> <p><u>Indigent Care - 19,000</u></p>
--	--

Cash Status

Cash balances as of May 31, 2016 are \$13,789,205.
This equates to 88.03 days of expenses on hand.

Accounts Receivable

Net Accounts Receivable days are at 58.31 days for the end of May compared to 69.70 last year and 56.02 last month.

Footnotes to Financials

* The attached financial statements include a onetime, non-recurring and non-cash charge to the Income Statement to reflect the Balance Sheet adjustment to the Accounts Receivable asset account. MHCC has determined that it is advantageous to turn over long dated receivables for collection to a private contractor for establishment of payment programs and/or collection action. This policy change has resulted in reduction of Accounts Receivable by approximately \$3,000,000 and a charge to Operating Expense under the "Indigent Care" category by the same amount. Although this is a non-cash charge it has the effect of reducing the Operating Income by the amount of the charge. Monies recovered through the program will be credited to Bad Debt Recovery as they are received from the contract collection agency. Operating cash flow is the sum of Operation Income, Depreciation and the above described non-cash charge.

** MHCC is paying back Medicare (\$3,000,000) beginning in January, 2016, for six months. This resulted from a settled cost report and a lump sum payment where Medicare reimbursed the hospital more than it should have.

**Memorial Hospital of Converse County
Statistics
For The Period Ended May 31, 2016**

Monthly						Year to Date					
May 2016	May 2015	Variance From Prior May	Budget	Variance Amount	%	YTD Thru May 2016	YTD Thru May 2015	Variance From Prior YTD	YTD Budget	Variance Amt.	%
74	80	(6)	74	0	0.0%	874	874	0	814	60	7.4%
5	5	0	4	1	25.0%	43	48	(5)	55	(12)	-21.8%
79	85	(6)	78	1	1.3%	917	922	(5)	869	48	5.5%
208	195	13	196	12	6.1%	2,439	2,351	88	2,486	(47)	-1.9%
81	77	4	55	26	47.3%	655	749	(94)	814	(159)	-19.5%
289	272	17	251	38	15.1%	3,094	3,100	(6)	3,300	(206)	-6.2%
11	16	(5)	16	(5)	-31.3%	148	149	(1)	176	(28)	-15.9%
19	25	(6)	26	(7)	-26.9%	258	255	3	286	(28)	-9.8%
72	101	(29)	98	(26)	-26.5%	1,112	1,020	92	1,078	34	3.2%
3,069	3,294	(225)	3,478	(409)	-11.8%	35,739	36,282	(543)	38,258	(2,519)	-6.6%
464	479	(15)	576	(112)	-19.4%	5,450	6,025	(575)	6,336	(886)	-14.0%
3,533	3,773	(240)	4,054	(521)	-12.9%	41,189	42,307	(1,118)	44,594	(3,405)	-7.6%
344	328	16	333	11	3.3%	338	324	14	333	5	1.4%

Financial Ratios	May 2016	May 2015	YTD	US	WY	Misc. Measurements	YTD - 16	YTD - 15	Variance From Prior Year	WY	Variance From WY
Days Cash on Hand YTD	88	88	N/A	69	107	Total Revenue per FTE	\$255,515	\$225,075	\$30,440	\$145,000	\$110,515
Operating Margin	-27.33%	-5.93%	-3.05%	0.99%	0.77%	Contractual Deductions	31.78%	25.20%	6.58%	26.70%	5.08%
Net Margin	-22.87%	-3.34%	0.59%	2.51%	6.79%	Inpatient Revenue %	32.48%	34.77%	-2.29%	31.41%	1.07%
Current Ratio	4.69	4.67	N/A	2.29	3.89	Outpatient Revenue %	67.52%	65.23%	2.29%	66.90%	0.62%
Gross A/R Days	50.69	75.12				Average Length of Stay	2.78	2.66	0.12	3.30	(0.52)
Net A/R Days	58.31	69.70		54.20	57.94	Medicare Inp. Payer Mix	33.13%	33.08%	0.05%	31.00%	2.13%
FTEs per Adjusted Occupied Bed - Excluding MOB			11.41	With MOB	12.11	Average I/P Daily Census	7.26	7.02	0.24	3.50	3.76
Medicare Rural Hospital Flexibility Program Monitoring Team - US CAH Median-2013						Salaries to Total Expense	45.03%	47.08%	-2.05%	46.32%	-1.29%
Medicare Rural Hospital Flexibility Program Monitoring Team -WY CAH Medium-2013						Benefits as % of Salaries	24.52%	23.00%	1.52%		

Memorial Hospital of Converse County

Balance Sheet

May 31, 2016

	May 2016	May 2015
ASSETS		
CURRENT ASSETS		
Cash On Hand And In Banks	\$6,114,252	\$4,169,485
Certificates Of Deposit - Unrestricted	174,952	38,774
Total Cash Assets	\$6,289,205	\$4,208,259
Assets Whose Use is Restricted		
Bond Reserve Fund - (Bond Covenant Requirement)	0	0
Bond Payment Fund-(Bond Covenant Requirement)	0	0
Certificates of Deposit Securing Loan	7,500,000	8,500,000
Reserve Account - (Patient Contracts)	0	12,413
Additional (Bond Covenant Requirement)	0	0
Total Restricted Assets	\$7,500,000	\$8,512,413
Accounts Receivable (Gross)	11,609,181	14,288,524
Uncollectable Accts. & Contratual. Adj.	(3,497,774)	(4,438,731)
Net Patient Accounts	\$8,111,407	\$9,849,793
Due From Physicians	85,662	122,009
Inventories Of Supplies	960,578	1,084,680
Other Current Assets	1,528,127	2,974,493
Total Current Assets	\$24,474,979	\$26,751,647
LAND, BUILDING AND EQUIPMENT, net	31,706,936	29,664,831
OTHER ASSETS		
Investment - Big Country Rehab	182,416	290,267
Investment - Powder River Imaging	0	0
Total Other Assets	\$182,416	\$290,267
Total Assets	\$56,364,332	\$56,706,745
LIABILITIES AND FUND EQUITY		
CURRENT LIABILITIES		
Accounts Payable	1,428,487	1,556,571
Accrued Bond Interest/Principal Payable	0	0
Accrued Salaries	2,006,073	2,054,054
Accrued Taxes And Deductions	503,097	848,512
Current Portion Of Capital Leases	281,125	1,259,761
Current Portion of CD Secured Note	1,000,000	0
Contingent Liability-(Patient Contracts)	0	12,413
Total Current Liabilities	\$5,218,783	\$5,731,311
OTHER LIABILITIES		
Revenue Bonds Payable	0	0
Long Term EIB Accrual	0	83,265
Deferred Loss On Early Retirement Of Bonds	(455,014)	(499,807)
Discount On Bonds	0	0
Medicare Cost Report Settlement	648,332	0
Long Term CD Secured Note Obligations	6,500,000	0
Long Term Capital Lease Obligations	643,683	8,296,791
Total Other Liabilities	\$7,337,001	\$7,880,249
Total Liabilities	\$12,555,784	\$13,611,560
FUND EQUITY		
Fund Balance	43,482,683	42,126,062
Net Income	325,865 ***	969,123
Total Fund Balance	\$43,808,548	\$43,095,185
Total Liabilities And Fund Equity	\$56,364,332	\$56,706,745

Cash Flow Statement for May 2016 and FYTD 2016

Cash Flow From Operations	<u>May 2016</u>	<u>FYTD 2016</u>
Net Earnings/(Loss)	(\$839,562)	\$325,865
<u>Additions/(Subtractions) to Cash</u>		
Depreciation/Non-cash Interest	367,859	4,038,619
Decrease/(Increase) in Accounts Receivable	226,257	2,222,391
(Decrease)/Increase in Accounts Payable	(261,898)	(461,280)
Decrease/(Increase) in Inventory	13,910	51,757
Net Cash Flow From Operations	<u>(\$493,434)</u>	<u>\$6,177,352</u>
 Cash Flow from Capital Purchases		
Equipment, Fixed Assets	(85,720)	(3,473,433)
Loan Advance	0	0
 Cash Flow from Financing		
Notes Payable	<u>(22,167)</u>	<u>(1,088,348)</u>
 Cash Flow for the Month Ending: May 2016	<u><u>(\$601,321)</u></u>	<u><u>\$1,615,571</u></u>

October																															Days Recorded	31	
IP	7	5	5	4	5	5	5	6	6	4	10	12	11	2	0	0	2	8	10	12	10	10	7	9	10	8	8	7	6	5	3	202	6.5
OBS	0	2	1	4	0	1	3	0	1	2	1	1	2	0	0	0	1	4	1	2	0	0	0	1	4	2	0	1	0	0	1	35	1.1
SW	2	2	2	1	1	1	1	1	1	1	1	1	1	2	2	2	2	1	1	1	1	1	1	1	1	2	2	2	2	2	4	47	1.5
	9	9	8	9	6	7	9	7	8	7	12	14	14	4	2	2	5	13	12	15	11	11	8	11	16	12	10	10	8	7	8		9.2

November																															Days Recorded	30	
IP	4	9	8	11	11	11	8	11	10	7	5	4	5	10	13	9	8	9	8	7	8	9	11	12	7	6	4	6	16	16	263	8.8	
OBS	4	0	1	4	0	0	3	1	1	2	0	0	1	1	2	2	0	0	0	0	0	3	2	0	0	0	0	1	0	1	29	1.0	
SW	4	3	2	2	2	2	3	4	2	3	4	3	3	3	3	2	3	3	3	3	5	5	4	4	6	6	6	6	5	5	109	3.6	
	12	12	11	17	13	13	14	16	13	12	9	7	9	14	18	13	11	12	11	10	13	17	17	16	13	12	10	13	21	22	0		13.4

December																															Days Recorded	31		
IP	10	7	6	8	7	9	14	12	15	7	7	8	9	12	11	7	4	4	10	12	8	7	5	5	8	5	8	11	9	6	8	259	8.4	
OBS	0	0	0	0	2	5	0	1	0	0	1	0	1	0	1	0	0	1	2	2	0	1	1	0	0	1	0	0	2	1	0	22	0.7	
SB	5	5	5	5	3	2	3	4	4	3	3	1	2	2	1	1	1	1	1	1	1	2	2	2	2	2	3	3	3	4	4	81	2.6	
																																		11.7

													Mo's Rec	11
IP	8.52	6.45	7.77	6.68	8.60	6.65	7.71	6.86	7.35	6.93	6.32		7.26	
OBS	1.42	0.55	0.70	0.45	0.67	0.48	0.58	1.00	0.90	0.70	0.94		0.76	
SB	1.55	2.29	1.67	1.58	1.27	1.71	1.42	1.21	4.23	2.70	1.77		1.95	
	11.49	9.29	10.14	8.71	10.54	8.84	9.71	9.07	12.48	10.33	9.03	0.00	9.97	
													0.00	
Hi	16	22												
Lo	2	7												

January																															Days Recorded	31			
IP	6	5	8	8	13	12	11	9	8	8	7	8	3	2	4	7	10	10	11	10	13	13	14	16	7	9	8	9	8	9	12	278	9.0		
OBS	0	0	1	0	1	1	0	0	1	2	0	1	3	1	0	0	3	2	4	2	1	1	0	2	0	1	1	0	0	1	2	31	1.0		
SB	3	4	4	3	3	2	4	4	6	4	3	3	4	5	5	5	3	3	2	3	3	3	3	3	6	4	3	3	3	4	4	112	3.6		
																																			13.6

February																															Days Recorded	28			
IP	13	13	7	8	7	10	11	12	8	9	1	2	4	9	14	18	20	16	13	6	10	8	6	5	4	5	8	13				260	9.3		
OBS	1	1	1	0	3	1	1	1	3	1	0	0	4	3	0	1	1	1	0	1	2	1	1	0	0	0	0					28	1.0		
SB	4	3	4	3	3	2	3	2	3	5	4	4	3	2	2	2	3	4	4	2	2	2	2	2	2	2	3	3				80	2.9		
																																			13.1

March																															Days Recorded	31			
IP	11	12	5	10	7	4	4	3	3	5	5	3	9	11	7	7	8	4	5	8	11	11	11	12	11	7	7	9	8	10	12	240	7.7		
OBS	0	2	1	0	0	1	1	1	1	0	0	1	1	1	0	2	0	0	0	0	1	1	1	0	0	1	1	3	3	2	3	28	0.9		
SB	4	4	4	4	4	3	2	2	3	3	3	3	3	3	3	1	1	1	1	2	2	3	2	2	1	1	2	2	2	2	2	75	2.4		
																																			11.1

April																															Days Recorded	30			
IP	12	14	11	15	12	10	12	7	5	3	5	4	6	5	3	1	2	4	8	8	4	3	7	6	8	14	9	13	12	8		205	6.8		
OBS	0	1	2	2	1	1	0	0	0	0	3	0	1	1	0	0	0	1	0	2	0	0	0	0	2	0	0	2	0	2		21	0.7		
SB	2	2	2	2	2	2	1	1	1	1	1	2	2	2	2	2	2	2	2	2	2	3	3	3	4	4	3	4	4	4	5		72	2.4	
																																			9.9

May																															Days Recorded	31			
IP	12	14	11	15	12	10	12	7	5	3	5	4	6	5	3	1	2	4	8	8	4	3	7	6	8	14	9	13	12	8		205	6.6		
OBS	0	1	2	2	1	1	0	0	0	0	3	0	1	1	0	0	0	1	0	2	0	0	0	0	2	0	0	2	0	2		21	0.7		
SB	2	2	2	2	2	2	1	1	1	1	1	2	2	2	2	2	2	2	2	2	2	3	3	3	4	4	3	4	4	4	5		72	2.3	
																																			9.6

Statistics	May 2016	May	Prior May	Thru May	May 2015	May 2016	May 2015	Prior May						
	<u>June</u>	<u>July</u>	<u>Aug</u>	<u>Sep</u>	<u>Oct</u>	<u>Nov</u>	<u>Dec</u>	<u>Jan</u>	<u>Feb</u>	<u>Mar</u>	<u>Apr</u>	<u>May</u>		
Curr. 12 mo.	103	105	100	109	121	110	124	93	81	101	96	72		101
Current Budget	105	100	100	100	100	100	100	100	100	100	100	100		
Prev. 12 mo.	98	83	88	85	110	89	127	82	97	66	92	101		93
Surgeries														
	<u>June</u>	<u>July</u>	<u>Aug</u>	<u>Sep</u>	<u>Oct</u>	<u>Nov</u>	<u>Dec</u>	<u>Jan</u>	<u>Feb</u>	<u>Mar</u>	<u>Apr</u>	<u>May</u>		
Curr. 12 mo.	7.67	8.52	6.45	7.77	6.68	8.60	6.65	7.71	6.86	7.35	6.93	6.32		7.29
Current Budget	6.84	7.32	7.32	7.32	7.32	7.32	7.32	7.32	7.32	7.32	7.32	7.32		
Prev. 12 mo.	7.70	9.23	7.58	7.23	6.61	6.83	6.29	7.32	8.14	5.00	6.50	6.74		7.10
IP Daily Census														
	<u>June</u>	<u>July</u>	<u>Aug</u>	<u>Sep</u>	<u>Oct</u>	<u>Nov</u>	<u>Dec</u>	<u>Jan</u>	<u>Feb</u>	<u>Mar</u>	<u>Apr</u>	<u>May</u>		
Curr. 12 mo.	279	241	235	254	242	296	264	252	258	278	239	298		261
Current Budget	201	237	237	237	237	237	237	237	237	237	237	237		
Prev. 12 mo.	164	214	253	242	201	176	247	211	228	201	220	174		211
CTs														
	<u>June</u>	<u>July</u>	<u>Aug</u>	<u>Sep</u>	<u>Oct</u>	<u>Nov</u>	<u>Dec</u>	<u>Jan</u>	<u>Feb</u>	<u>Mar</u>	<u>Apr</u>	<u>May</u>		
Curr. 12 mo.	105	107	95	115	118	96	104	83	94	118	90	98		102
Current Budget	84	99	99	99	99	99	99	99	99	99	99	99		
Prev. 12 mo.	97	105	82	94	93	79	67	80	91	95	100	102		90
MRIs														
	<u>June</u>	<u>July</u>	<u>Aug</u>	<u>Sep</u>	<u>Oct</u>	<u>Nov</u>	<u>Dec</u>	<u>Jan</u>	<u>Feb</u>	<u>Mar</u>	<u>Apr</u>	<u>May</u>		
Curr. 12 mo.	597	641	619	614	634	555	604	560	564	577	533	514		584
Current Budget	483	575	575	575	575	575	575	575	575	575	575	575		
Prev. 12 mo.	486	625	624	598	598	450	503	531	509	442	588	537		541
Total Other X-ray Exams														
	<u>June</u>	<u>July</u>	<u>Aug</u>	<u>Sep</u>	<u>Oct</u>	<u>Nov</u>	<u>Dec</u>	<u>Jan</u>	<u>Feb</u>	<u>Mar</u>	<u>Apr</u>	<u>May</u>		
Lab Procedures														
Curr. 12 mo.	34,102	33,960	32,375	33,895	34,186	29,028	28,811	29,995	29,694	32,443	29,662	29,729		31,490
Current Budget	29,531	32,981	32,981	32,981	32,981	32,981	32,981	32,981	32,981	32,981	32,981	32,981		
Prev. 12 mo.	29,091	32,256	40,728	34,548	33,336	26,829	29,939	29,174	30,794	29,041	29,470	24,854		30,838
														0
	<u>June</u>	<u>July</u>	<u>Aug</u>	<u>Sep</u>	<u>Oct</u>	<u>Nov</u>	<u>Dec</u>	<u>Jan</u>	<u>Feb</u>	<u>Mar</u>	<u>Apr</u>	<u>May</u>		
Curr. 12 mo.	553	579	580	559	511	496	466	459	429	465	442	464		500
Current Budget	477	569	569	569	569	569	569	569	569	569	569	569		
Prev. 12 mo.	565	626	703	661	503	546	525	440	490	561	491	479		549
Emergency Room Visits														
	<u>June</u>	<u>July</u>	<u>Aug</u>	<u>Sep</u>	<u>Oct</u>	<u>Nov</u>	<u>Dec</u>	<u>Jan</u>	<u>Feb</u>	<u>Mar</u>	<u>Apr</u>	<u>May</u>		
Curr. 12 mo.	6,599,027	6,725,357	6,882,579	7,669,999	7,612,860	7,350,420	8,296,381	6,844,648	6,797,382	7,516,421	6,704,846	6,691,145		7,140,922
Current Budget	5,522,316	6,417,517	6,406,894	6,417,517	6,413,975	6,417,513	6,413,977	6,417,515	6,417,515	6,413,977	6,417,514	6,413,974		
Prev. 12 mo.	5,973,921	6,284,035	6,179,897	6,582,246	6,384,088	6,214,322	6,623,555	5,752,805	5,798,463	5,148,635	6,010,185	5,869,108		6,068,438
Hospital Revenues														
	<u>June</u>	<u>July</u>	<u>Aug</u>	<u>Sep</u>	<u>Oct</u>	<u>Nov</u>	<u>Dec</u>	<u>Jan</u>	<u>Feb</u>	<u>Mar</u>	<u>Apr</u>	<u>May</u>		
Curr. 12 mo.	62.80	60.41	59.35	61.01	61.16	61.26	58.46	56.22	49.59	54.12	56.02	58.31		58.23
Current Budget	53.00	55.00	55.00	55.00	55.00	55.00	55.00	55.00	55.00	55.00	55.00	55.00		
Prev. 12 mo.	71.01	63.76	67.46	69.98	67.01	69.09	64.15	58.68	64.29	63.76	64.67	69.70		66.13
Net Days of Revenue in A/R														
	<u>June</u>	<u>July</u>	<u>Aug</u>	<u>Sep</u>	<u>Oct</u>	<u>Nov</u>	<u>Dec</u>	<u>Jan</u>	<u>Feb</u>	<u>Mar</u>	<u>Apr</u>	<u>May</u>		
Curr. 12 mo.	48	55	35	54	51	48	53	37	30	46	37	35		44
Current Budget	52	41	41	41	41	41	41	41	41	41	41	41		
Prev. 12 mo.	37	43	28	36	37	46	47	30	37	28	40	44		38
Orthopedic Surgeries														
	<u>June</u>	<u>July</u>	<u>Aug</u>	<u>Sep</u>	<u>Oct</u>	<u>Nov</u>	<u>Dec</u>	<u>Jan</u>	<u>Feb</u>	<u>Mar</u>	<u>Apr</u>	<u>May</u>		

Curr. 12 mo.	22	15	17	20	10	12	12	17	11	15	8	11	14
Current Budget	15	16	16	16	16	16	16	16	16	16	16	16	16
Prev. 12 mo.	19	14	12	14	8	15	17	19	14	11	9	16	14
Newborns													

	<u>June</u>	<u>July</u>	<u>Aug</u>	<u>Sep</u>	<u>Oct</u>	<u>Nov</u>	<u>Dec</u>	<u>Jan</u>	<u>Feb</u>	<u>Mar</u>	<u>Apr</u>	<u>May</u>	
Curr. 12 mo.	18	23	25	23	22	24	28	23	18	21	19	23	22
Current Budget	24	24	24	24	24	24	24	24	24	24	24	24	24
Prev. 12 mo.	24	23	26	24	29	23	32	21	26	17	16	25	24
General Surgeries													

	<u>June</u>	<u>July</u>	<u>Aug</u>	<u>Sep</u>	<u>Oct</u>	<u>Nov</u>	<u>Dec</u>	<u>Jan</u>	<u>Feb</u>	<u>Mar</u>	<u>Apr</u>	<u>May</u>	
Curr. 12 mo.	53	56	40	58	53	54	69	62	60	45	59	62	56
Current Budget	49	49	49	49	49	49	49	49	49	49	49	49	49
Prev. 12 mo.	41	47	44	34	55	38	60	34	41	46	55	54	46
Procedure Core Visits													

	<u>June</u>	<u>July</u>	<u>Aug</u>	<u>Sep</u>	<u>Oct</u>	<u>Nov</u>	<u>Dec</u>	<u>Jan</u>	<u>Feb</u>	<u>Mar</u>	<u>Apr</u>	<u>May</u>	
Curr. 12 mo.	97	103	122	108	126	120	111	75	86	117	102	95	105
Current Budget	94	93	93	93	93	93	93	93	93	93	93	93	93
Prev. 12 mo.	82	95	96	92	112	81	92	70	95	85	81	72	88
Mammography													

Year	Mammo Exams
Dec-04	977
Dec-05	1,037
Dec-06	1,081
Dec-07	1,101
Dec-08	1,154
Dec-09	1,231
Dec-10	1,208
Dec-11	979

	<u>June</u>	<u>July</u>	<u>Aug</u>	<u>Sep</u>	<u>Oct</u>	<u>Nov</u>	<u>Dec</u>	<u>Jan</u>	<u>Feb</u>	<u>Mar</u>	<u>Apr</u>	<u>May</u>	
Curr. 12 mo.	196	204	177	167	214	171	165	203	202	221	165	214	192
Current Budget	176	202	202	202	202	202	202	202	202	202	202	202	202
Prev. 12 mo.	199	214	228	206	198	144	190	186	169	177	221	191	194
Ultrasound													

	<u>June</u>	<u>July</u>	<u>Aug</u>	<u>Sep</u>	<u>Oct</u>	<u>Nov</u>	<u>Dec</u>	<u>Jan</u>	<u>Feb</u>	<u>Mar</u>	<u>Apr</u>	<u>May</u>	
Curr. 12 mo.	22	39	24	31	30	17	41	44	33	20	25	50	31
Current Budget	25	27	27	27	27	27	27	27	27	27	27	27	27
Prev. 12 mo.	36	38	30	27	38	13	32	32	26	24	19	25	28
Nuclear Medicine													

	<u>June</u>	<u>July</u>	<u>Aug</u>	<u>Sep</u>	<u>Oct</u>	<u>Nov</u>	<u>Dec</u>	<u>Jan</u>	<u>Feb</u>	<u>Mar</u>	<u>Apr</u>	<u>May</u>	
Curr. 12 mo.	10	10	13	12	14	14	14	3	10	15	14	6	11
Current Budget	10	12	12	12	12	12	12	12	12	12	12	12	12
Prev. 12 mo.	11	8	11	11	12	8	14	10	9	12	13	11	11
OB/GYN Surgeries													

	<u>June</u>	<u>July</u>	<u>Aug</u>	<u>Sep</u>	<u>Oct</u>	<u>Nov</u>	<u>Dec</u>	<u>Jan</u>	<u>Feb</u>	<u>Mar</u>	<u>Apr</u>	<u>May</u>	
Curr. 12 mo.	103	90	80	89	78	78	74	82	80	82	68	74	82
Current Budget	81	87	87	87	87	87	87	87	87	87	87	87	87
Prev. 12 mo.	100	89	85	94	70	81	86	83	79	61	67	80	81
Admissions													

	Insurance	Medicare	Medicaid	Self Pay	Workers Comp.	Other	
Fiscal Year 2015	41.87%	36.08%	9.12%	10.08%	2.82%	0.03%	100.00%
Fiscal Year 2016	46.32%	33.13%	9.36%	7.93%	3.08%	0.18%	100.00%

Payor Mix	<u>Avg.</u>	<u>May</u>	<u>Apr</u>	<u>Mar</u>	<u>Feb</u>	<u>Jan</u>	<u>Dec</u>	<u>Nov</u>	<u>Oct</u>	<u>Sep</u>	<u>Aug</u>	<u>July</u>	<u>June</u>
------------------	-------------	------------	------------	------------	------------	------------	------------	------------	------------	------------	------------	-------------	-------------

Thalken	0.00	0	0	0	0	0	0	0	0	0	0	0	0
Yost	0.55	0	0	0	4	0	1	0	0	0	1	0	0
Murphy	0.27	0	1	0	0	0	0	1	0	0	0	1	0
Retherford	2.64	1	2	4	1	0	3	4	2	4	3	5	4
Campbell	3.55	3	4	1	1	3	3	1	2	9	5	7	9
Rupp	0.00	0	0	0	0	0	0	0	0	0	0	0	0
Robertson	2.73	1	0	4	2	1	3	3	4	5	2	5	1
Lansang	0.09	0	0	0	0	0	0	0	1	0	0	0	0
Grosdidier	2.27	1	0	3	2	3	7	3	2	2	1	1	2
White, W.	2.18	4	1	2	4	2	1	1	1	1	4	3	1
Starks	2.00	7	3	0	4	3	2	0	1	2	0	0	0
Engle	7.45	4	3	11	8	12	5	7	7	8	11	6	14
Hospitalist	36.91	36	42	36	38	34	33	39	44	28	33	43	47
Skuza	0.18	0	0	0	0	0	0	0	1	0	1	0	0
Croft	5.18	6	3	6	5	7	4	7	3	10	2	4	3
Newborns	13.45	11	8	15	11	17	12	12	10	20	17	15	22
Admissions	79.45	74	67	82	80	82	74	78	78	89	80	90	103
	79.45												

Jan-00	Jan-00	Jan-00	Jan-00	Jan-00	Jan-00	Jan-00	Jan-00	Jan-00	Jan-00	Jan-00	Jan-00	Jan-00	Jan-00
0	0	0	0	0	0	0	0	0	0	0	0	0	0
0	0	0	0	0	0	0	0	0	0	0	0	0	0
0	0	0	0	0	0	0	0	0	0	0	0	0	0
0	0	0	0	0	0	0	0	0	0	0	0	0	0

	<u>June</u>	<u>July</u>	<u>Aug</u>	<u>Sep</u>	<u>Oct</u>	<u>Nov</u>	<u>Dec</u>	<u>Jan</u>	<u>Feb</u>	<u>Mar</u>	<u>Apr</u>	<u>May</u>	
Curr. 12 mo. Minor Procedures	26	22	17	21	24	18	20	17	18	14	21	15	
Curr. 12 mo. Scopes	27	34	23	37	29	36	49	45	42	31	38	47	
Procedure Core Visits													

	YTD FY	
Current Month	2016	
	Avg. Length of Stay	Avg. Length of Stay
Retherford	2.00	1.66
Lansang	1.50	1.71
Starks	2.00	2.03
Hospitalist	3.34	3.44
Grosdidier	1.00	2.20
Murphy	0.00	2.67
White, W.	3.00	3.08
Croft	2.43	3.19
Skuza	2.00	1.81
Yost	1.50	2.00
Engle	2.00	1.93
Rupp	0.00	0.00
Campbell	2.33	2.20
Robertson	0.00	2.72

	<u>June</u>	<u>July</u>	<u>Aug</u>	<u>Sep</u>	<u>Oct</u>	<u>Nov</u>	<u>Dec</u>	<u>Jan</u>	<u>Feb</u>	<u>Mar</u>	<u>Apr</u>	<u>May</u>	
Curr. 12 mo.	3181	3798	3253	3910	3841	2998	2720	3458	3212	4464	3769	3073	3,473
Current Budget	3228	3457	3457	3457	3457	3457	3457	3457	3457	3457	3457	3457	
Prev. 12 mo.	3531	3633	2855	3219	3654	3857	3124	3384	2976	3009	3666	3395	3,359
RT Procedures													

	<u>June</u>	<u>July</u>	<u>Aug</u>	<u>Sep</u>	<u>Oct</u>	<u>Nov</u>	<u>Dec</u>	<u>Jan</u>	<u>Feb</u>	<u>Mar</u>	<u>Apr</u>	<u>May</u>	
Curr. 12 mo.	362	421	341	399	448	604	446	411	409	342	397	462	420
Current Budget	369	371	371	371	371	371	371	371	371	371	371	371	
Prev. 12 mo.	347	420	382	440	416	262	362	337	324	264	398	329	357