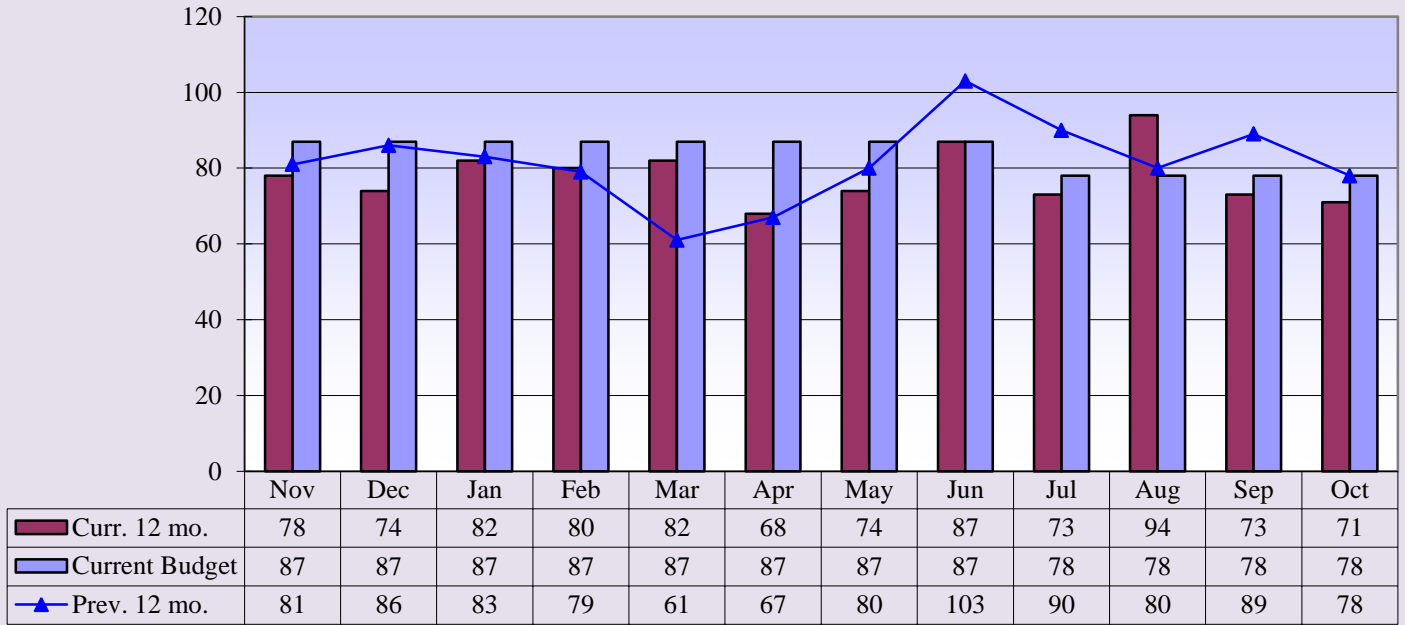


**Memorial Hospital of Converse County**  
**Financial and Statistical Packet**  
**Table of Contents - October 31, 2016**

	<u>Page #</u>
Admissions and Average IP Daily Census Graphs	1
Average Floor Census Breakdown Graph	2
Average Monthly Inpatient Admissions by Physician Graph	3
Average Length of Stay by Physician Graph	4
Payor Mix Comparisons and Emergency Room Visits Graphs	5
Total Surgeries and Orthopedic Surgeries Graphs	6
General and OB/GYN Surgery Graphs	7
Procedure Core Visits Graphs	8
Mammography Exams Graph	9
MRI and Cat Scan Graphs	10
Nuclear Medicine and Ultrasound Exams Graphs	11
Lab Procedures and Other X-Ray Graphs	12
Newborns and Net Days of Revenue in A/R Graphs	13
Respiratory and EKG Procedures Graphs	14
Hospital Revenue Graph	15
Income Statement/Budget Variance Report	16
Financial and Statistical Highlights	17
Statistics (Ratios - Productivity Indicators)	18
Balance Sheet	19
Cash Flow Statement	20

**Memorial Hospital of Converse County  
Admissions and Average IP Daily Census  
Oct. 2016**

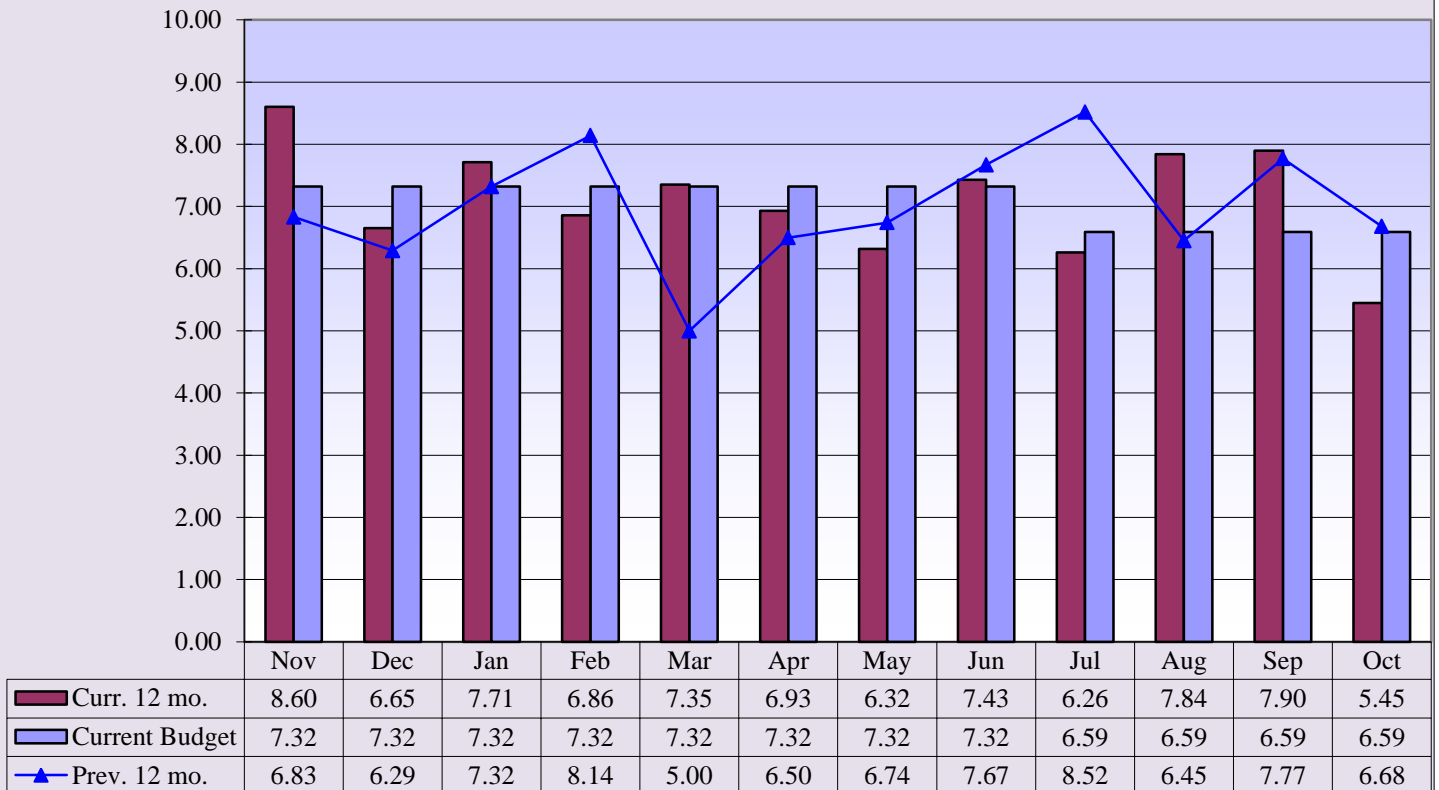
**Admissions**



**Current 12 mo. avg. = 78**

**Previous 12 mo. avg. = 81**

**Average IP Daily Census**

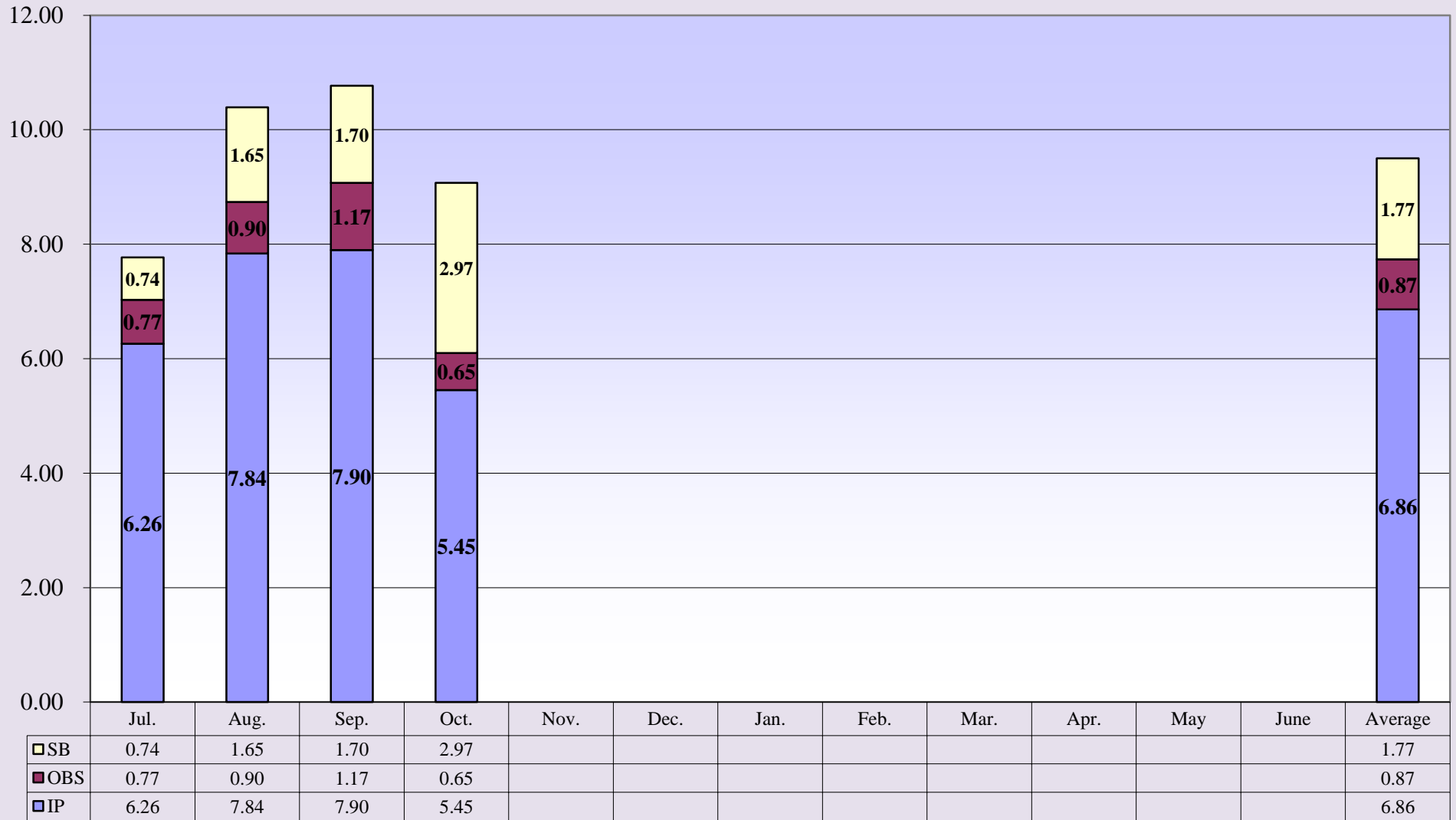


**Curr. 12 mo. avg. = 7.11**

**Prev. 12 mo. avg. = 6.99**

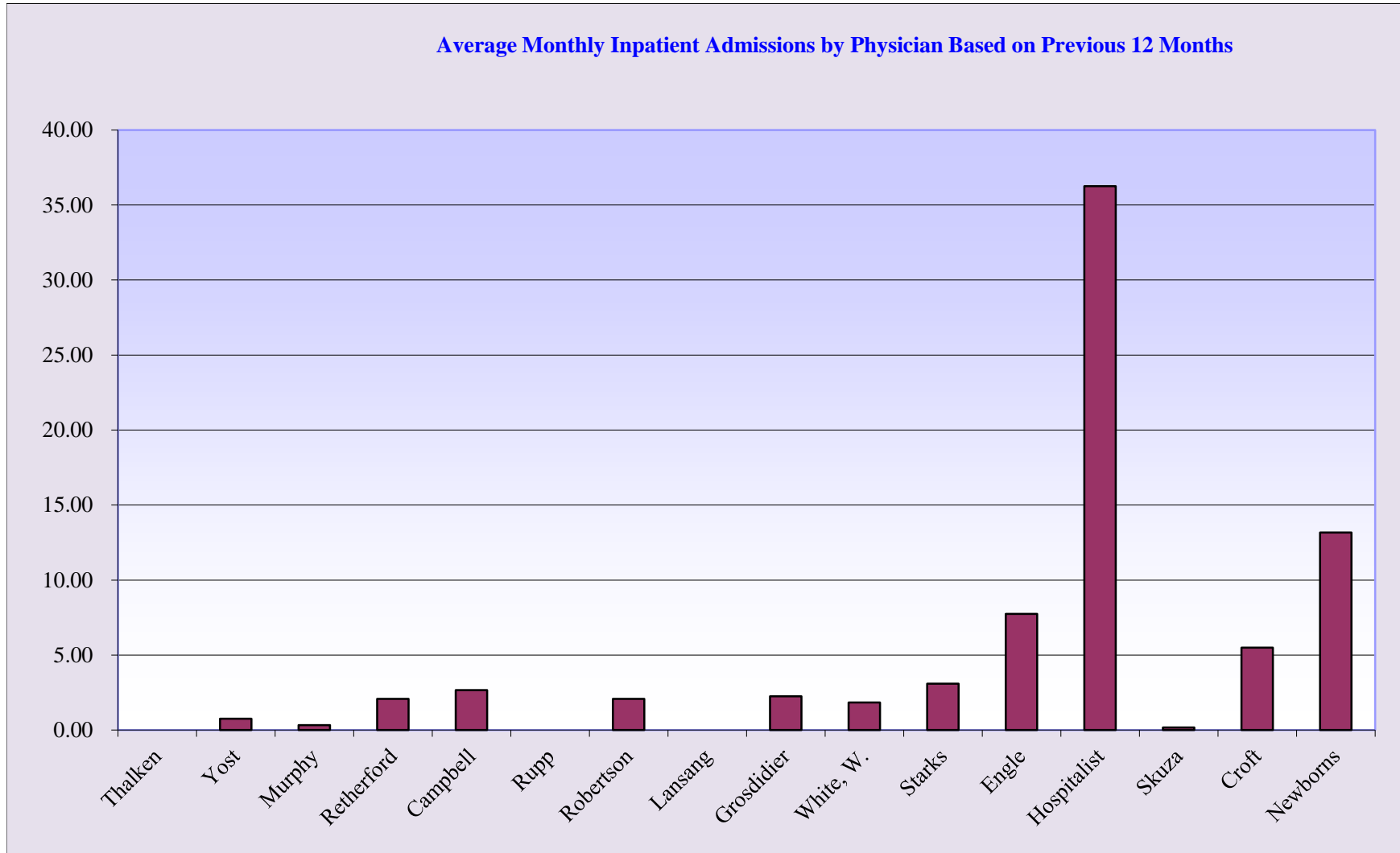
Memorial Hospital of Converse County  
 (FY 2017) Average Floor Census Breakdown  
 Oct. 2016

## (FY 2017) Average Floor Census Breakdown



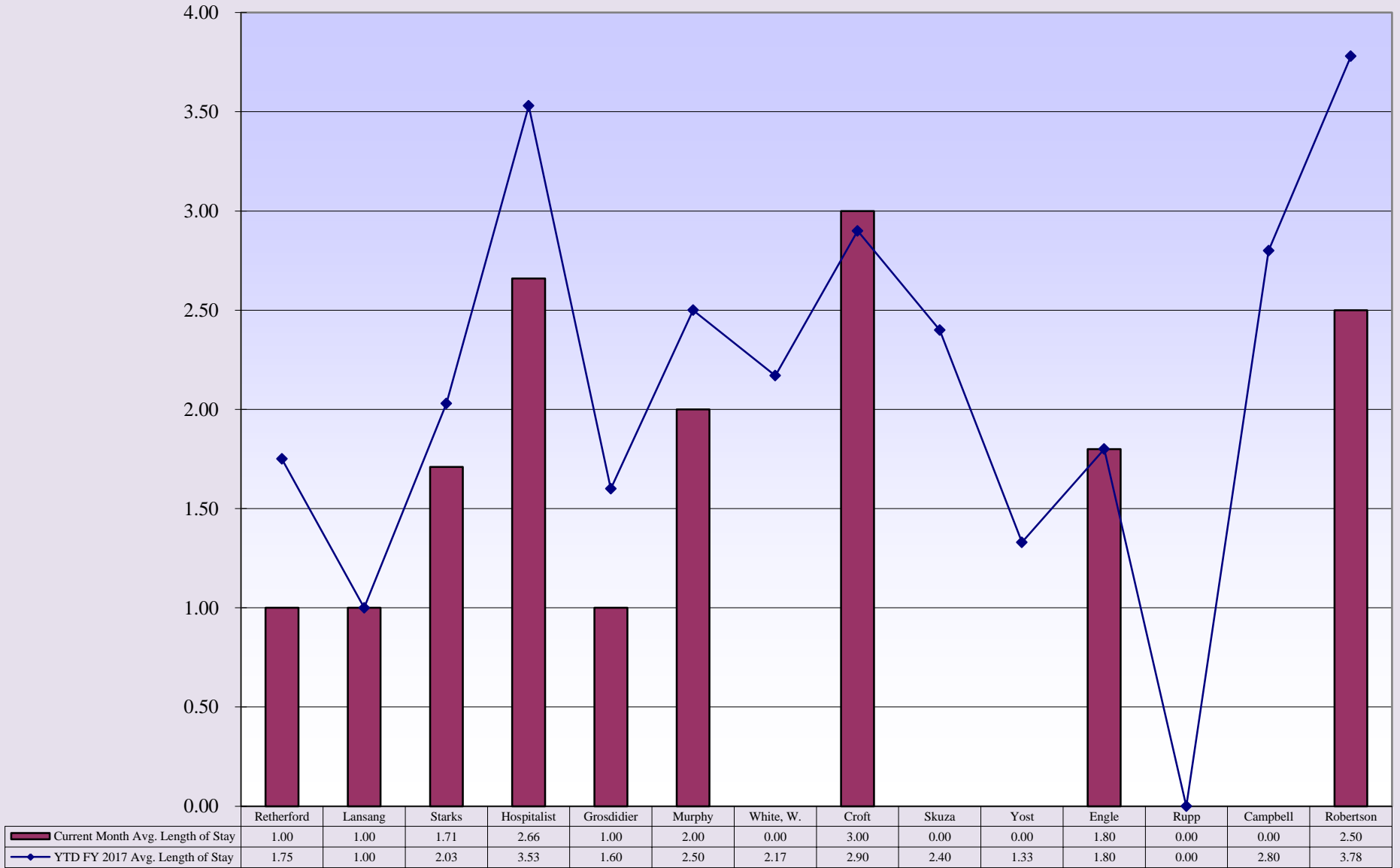
IP
  OBS
  SB

**Memorial Hospital of Converse County  
Average Monthly Inpatient Admissions by Physician  
Oct. 2016**



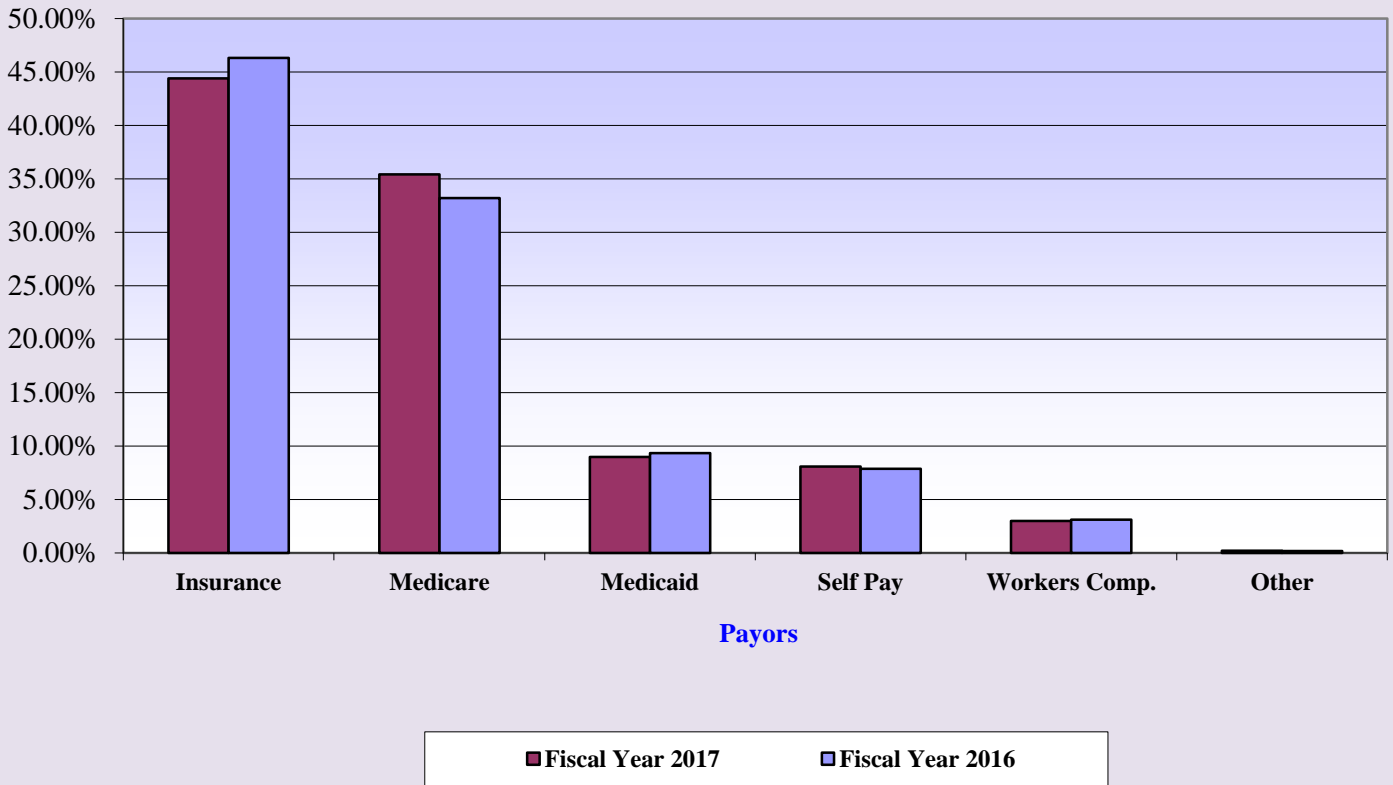
**Memorial Hospital of Converse County  
Average Length of Stay by Physician  
Oct. 2016**

**Average Length of Stay by Physician for Fiscal Year 2017**

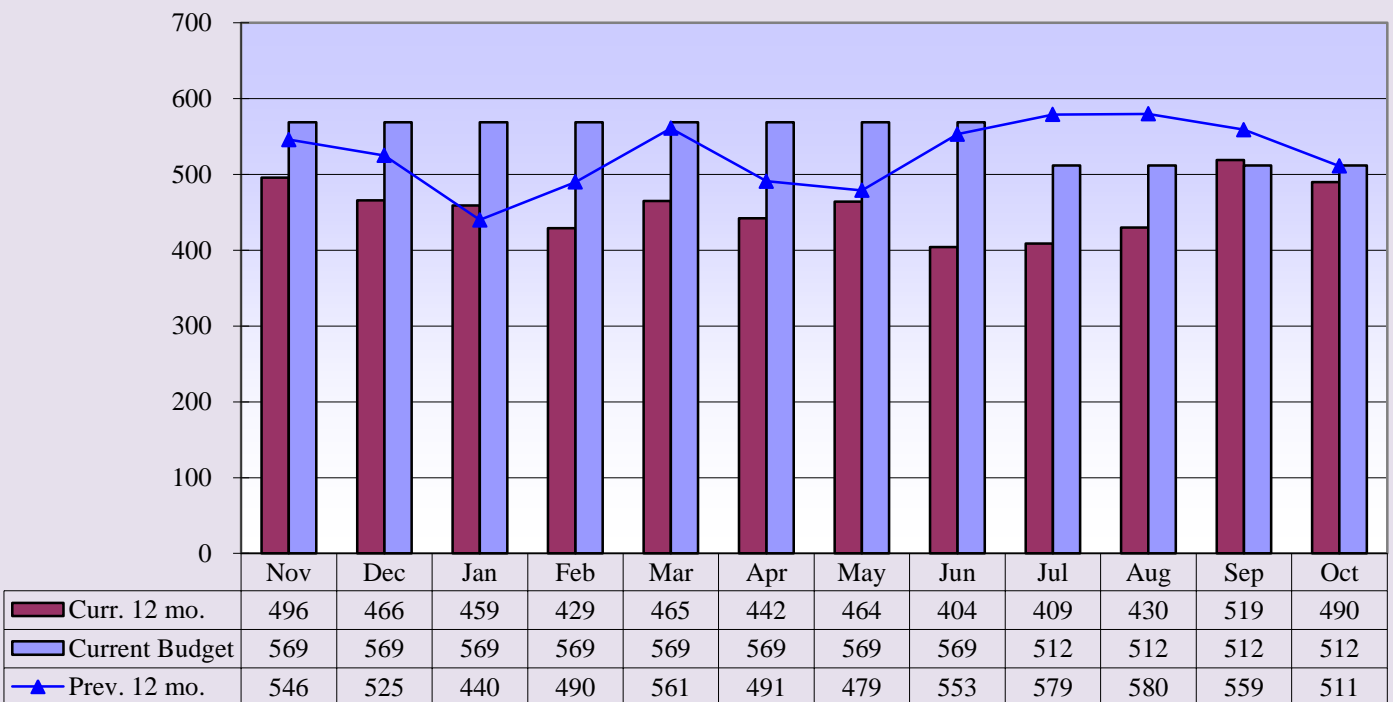


**Memorial Hospital of Converse County  
Payor Mix Comparisons and ER Visits  
Oct. 2016**

**Payor Mix Comparisons**



**Emergency Room Visits**

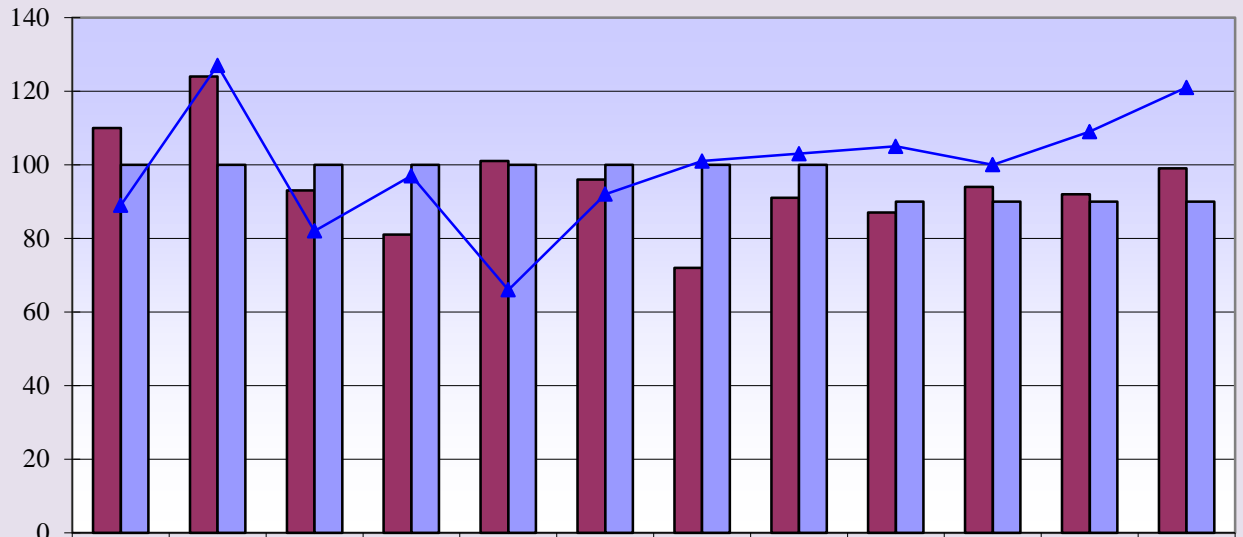


**Curr. 12 mo. avg. = 456**

**Prev. 12. mo. avg. = 526**

**Memorial Hospital of Converse County  
Total Surgeries and Orthopedic Surgeries  
Oct. 2016**

**Total Surgeries**

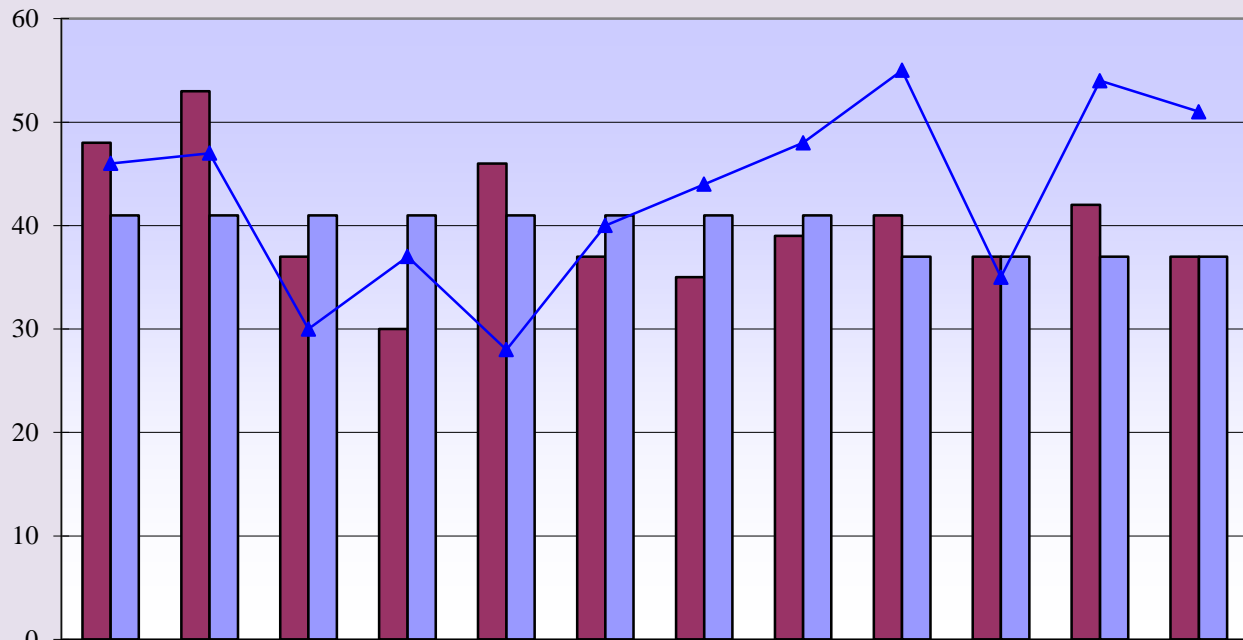


	Nov	Dec	Jan	Feb	Mar	Apr	May	Jun	Jul	Aug	Sep	Oct
Curr. 12 mo.	110	124	93	81	101	96	72	91	87	94	92	99
Current Budget	100	100	100	100	100	100	100	100	90	90	90	90
Prev. 12 mo.	89	127	82	97	66	92	101	103	105	100	109	121

**Current 12 mo. avg. = 95**

**Previous 12 mo. avg. = 99**

**Orthopedic Surgeries**



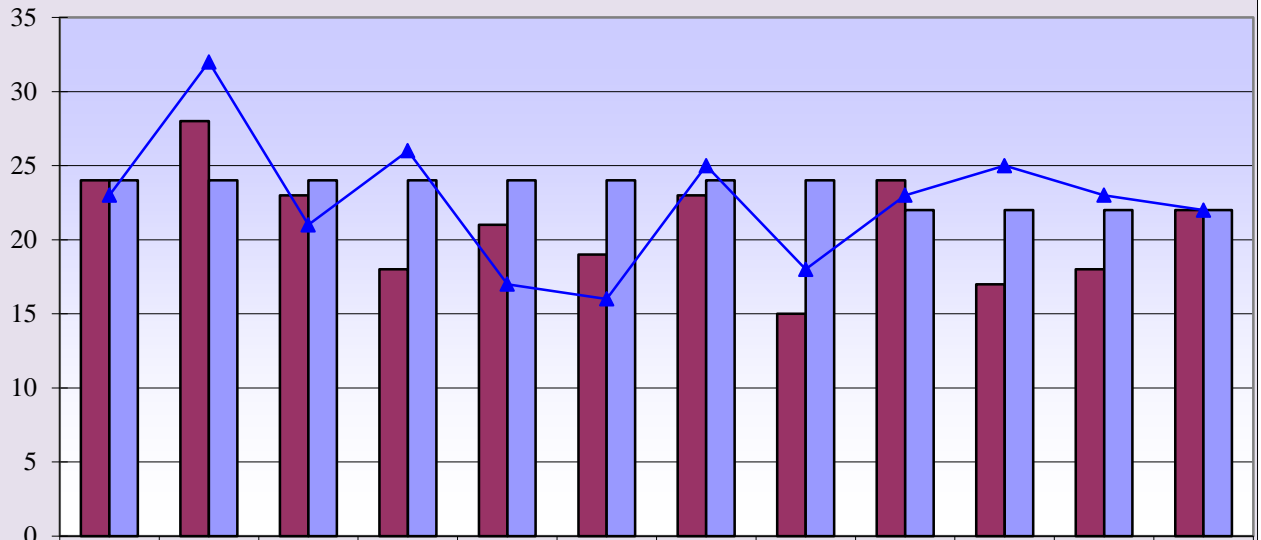
	Nov	Dec	Jan	Feb	Mar	Apr	May	Jun	Jul	Aug	Sep	Oct
Curr. 12 mo.	48	53	37	30	46	37	35	39	41	37	42	37
Current Budget	41	41	41	41	41	41	41	41	37	37	37	37
Prev. 12 mo.	46	47	30	37	28	40	44	48	55	35	54	51

**Curr. 12 mo. avg. = 40**

**Prev. 12 mo. avg. = 43**

**Memorial Hospital of Converse County  
General and OB/GYN Surgeries  
Oct. 2016**

**General Surgeries**

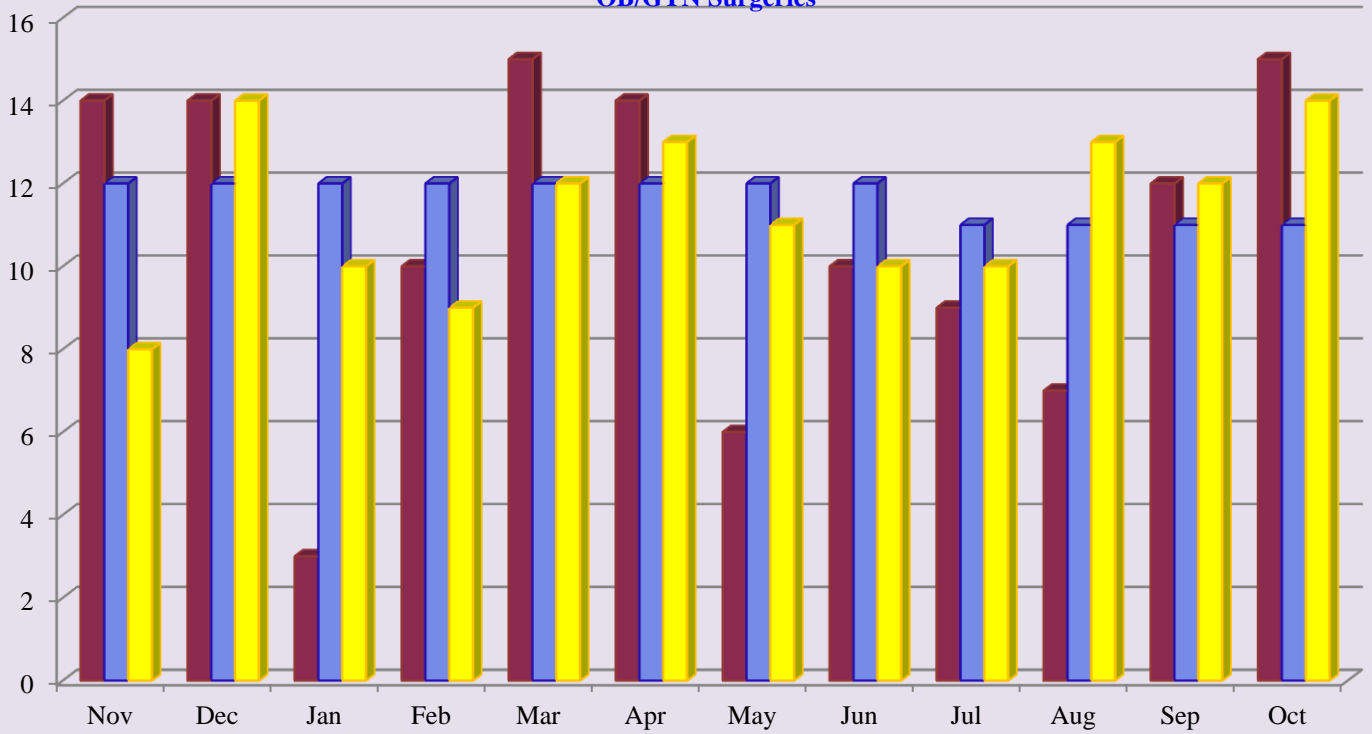


	Nov	Dec	Jan	Feb	Mar	Apr	May	Jun	Jul	Aug	Sep	Oct
Curr. 12 mo.	24	28	23	18	21	19	23	15	24	17	18	22
Current Budget	24	24	24	24	24	24	24	24	22	22	22	22
Prev. 12 mo.	23	32	21	26	17	16	25	18	23	25	23	22

**Curr. 12 mo. avg. = 21**

**Prev. 12 mo. avg. = 23**

**OB/GYN Surgeries**



**Curr. 12 mo. avg. = 11**

**Prev. 12 mo. avg. = 11**

■ Curr. 12 mo.

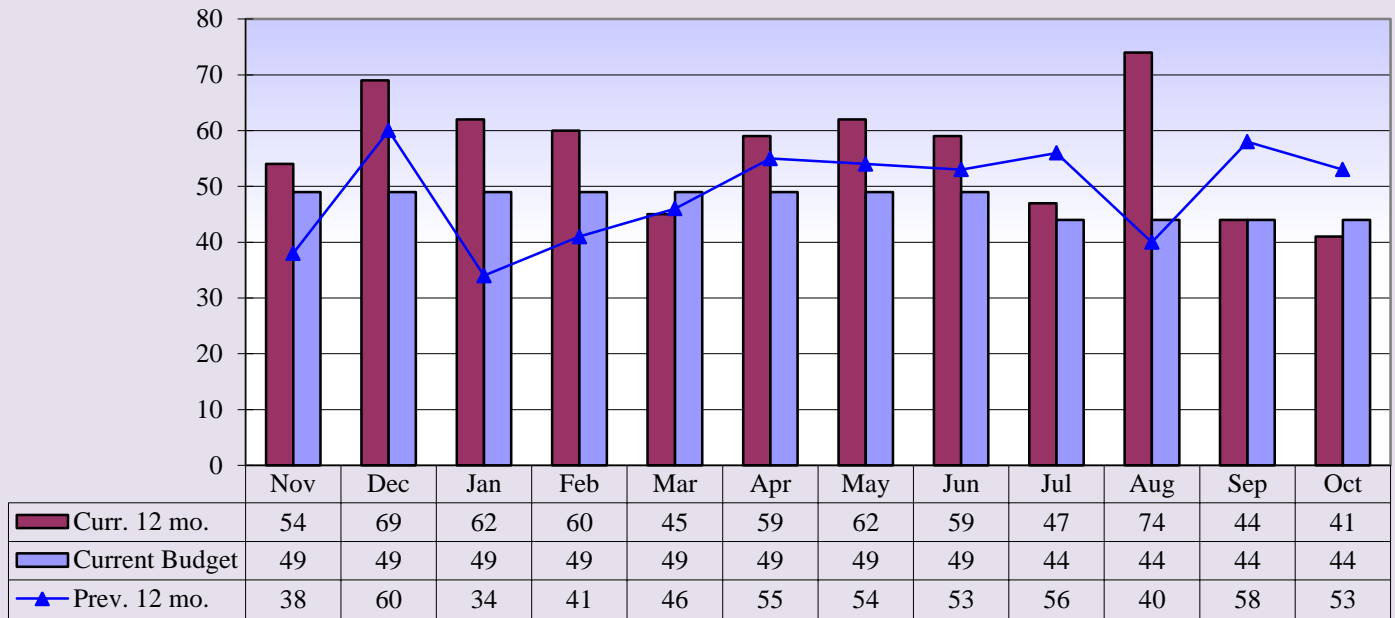
■ Current Budget

■ Prev. 12 mo.



**Memorial Hospital of Converse County  
Procedure Core Visits  
Oct. 2016**

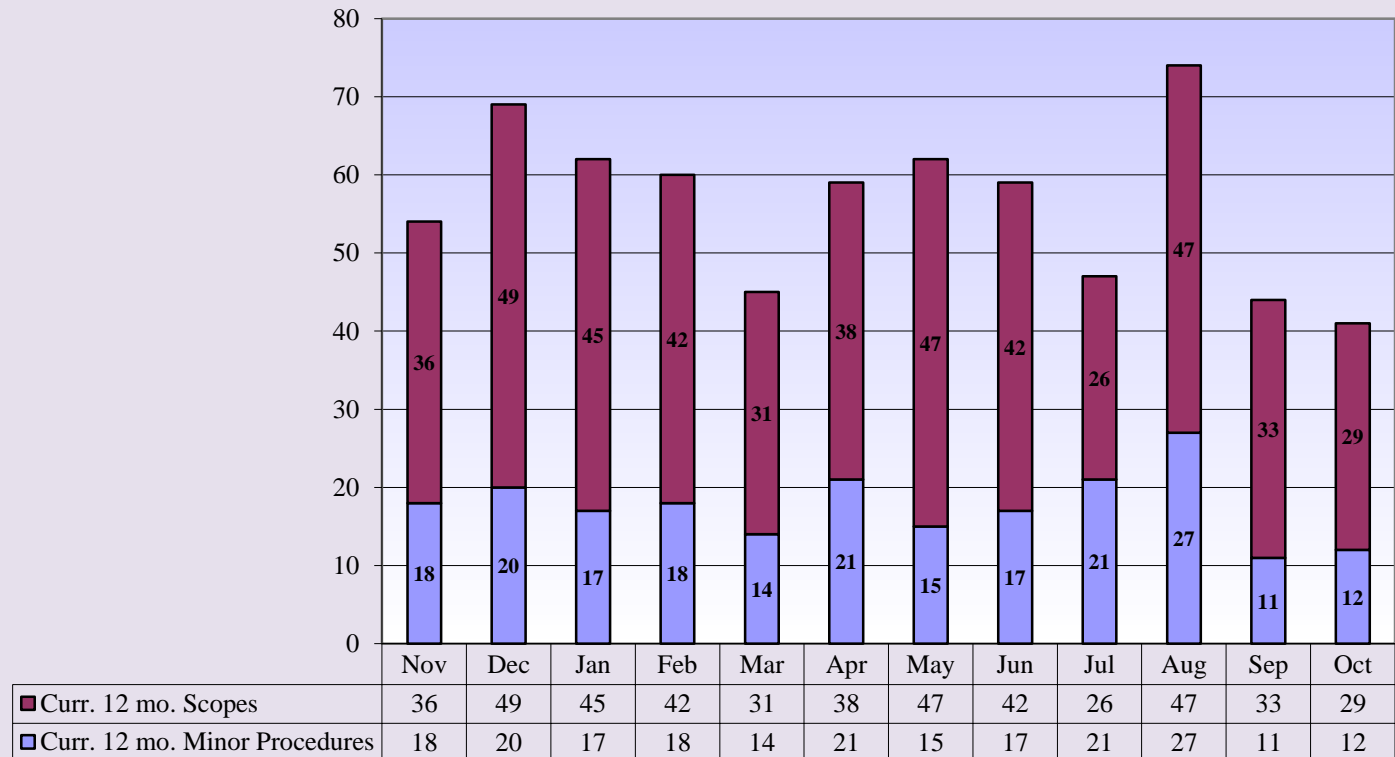
**Procedure Core Visits**



**Curr. 12 mo. avg. = 56**

**Prev. 12 mo. avg. = 49**

**Procedure Core Visit Types**



**Memorial Hospital of Converse County  
Mammography Exams  
Oct. 2016**

**Mammography Exams**



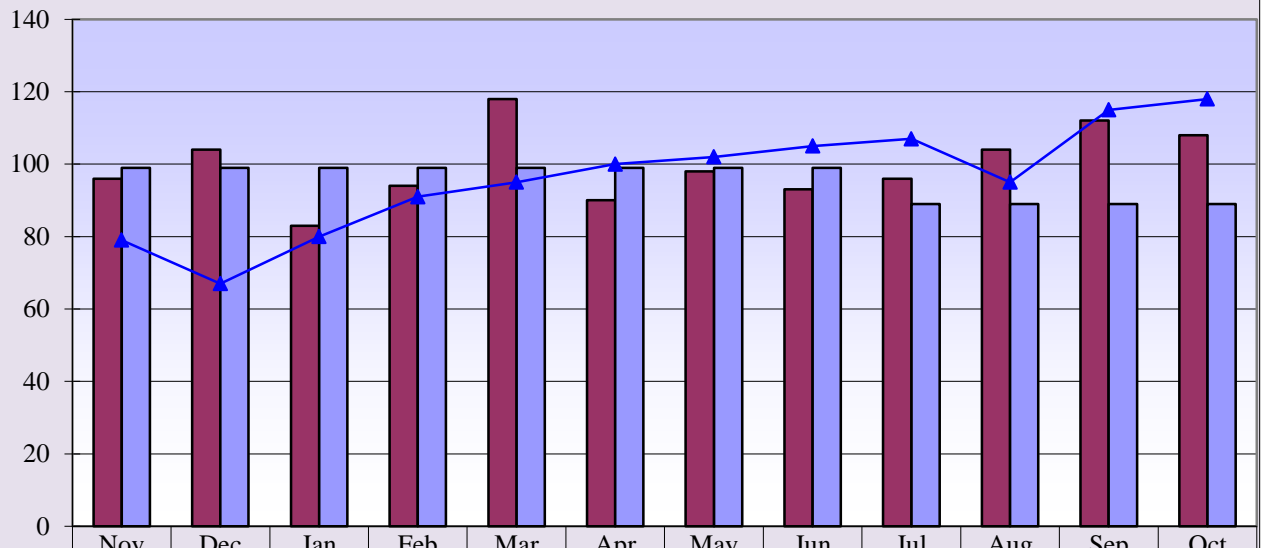
<b>■ Curr. 12 mo.</b>	120	111	75	86	117	102	95	90	79	96	92	136
<b>■ Current Budget</b>	93	93	93	93	93	93	93	93	84	84	84	84
<b>▲ Prev. 12 mo.</b>	81	92	70	95	85	81	72	97	103	122	108	126

**Curr. 12 mo. avg. = 100**

**Prev. 12 mo. avg. = 94**

**Memorial Hospital of Converse County  
MRI & Cat Scans  
Oct. 2016**

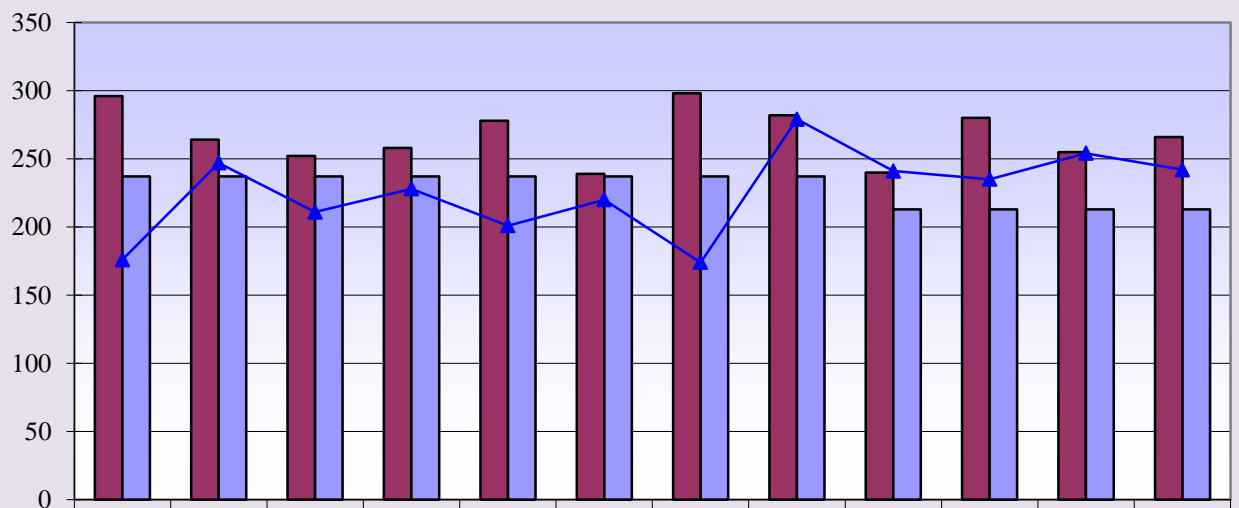
**MRI Exams**



**Curr. 12 mo. avg. = 100**

**Prev. 12 mo. avg. = 96**

**CT Exams**

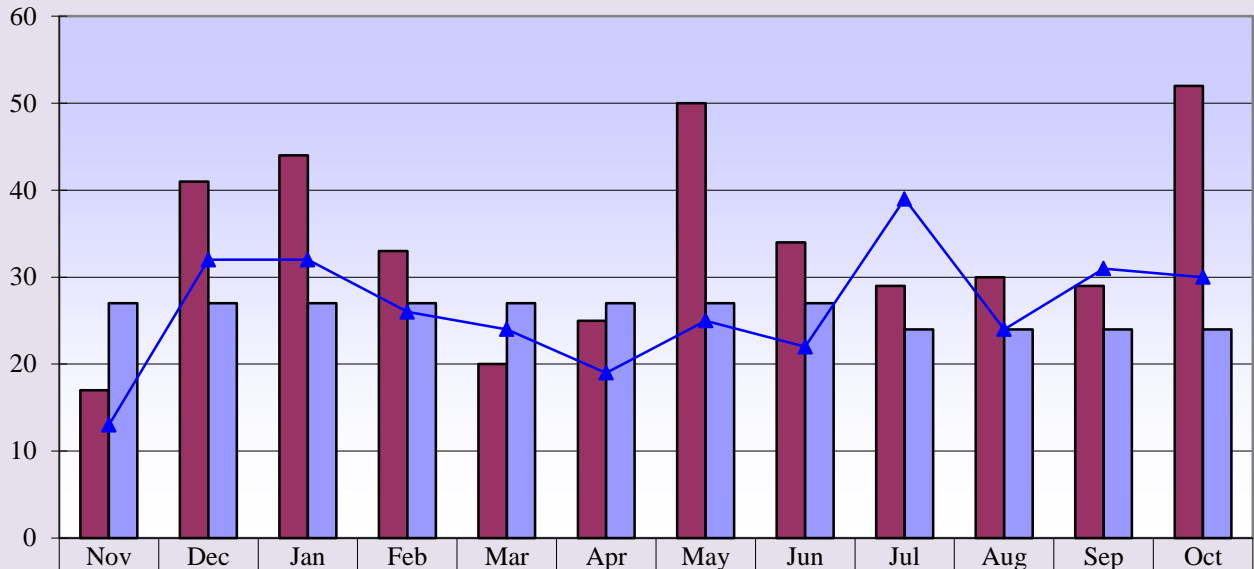


**Curr. 12 mo. avg. = 267**

**Prev. 12 mo. avg. = 226**

**Memorial Hospital of Converse County  
Nuclear Med and Ultrasound Exams  
Oct. 2016**

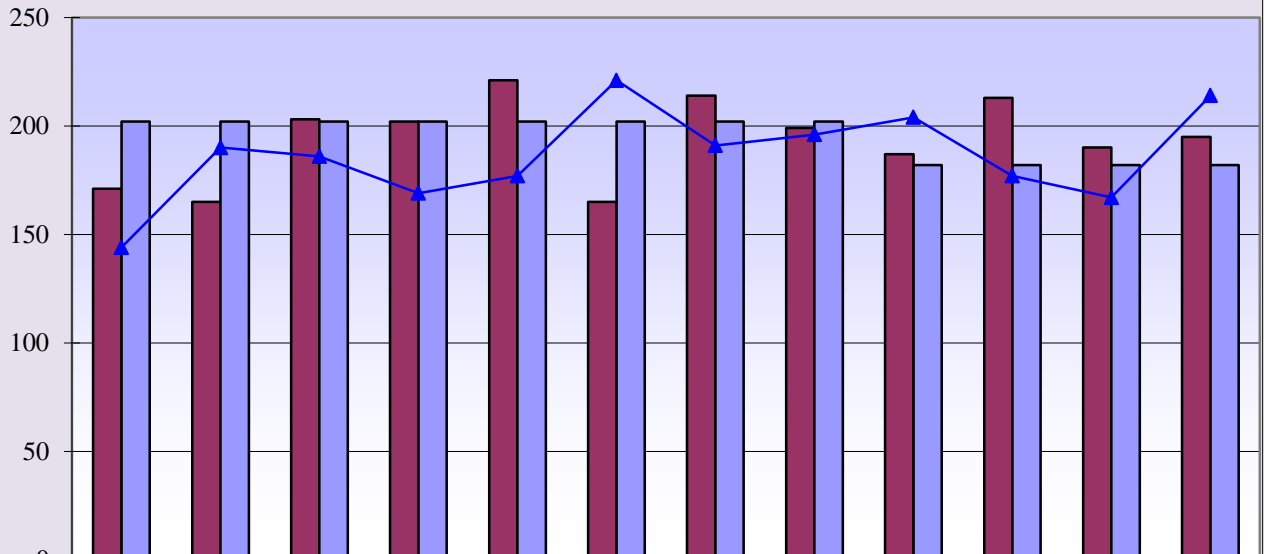
**Nuclear Medicine Exams**



**Curr. 12 mo. avg = 34**

**Prev. 12 mo. avg. = 26**

**Ultrasound Exams**

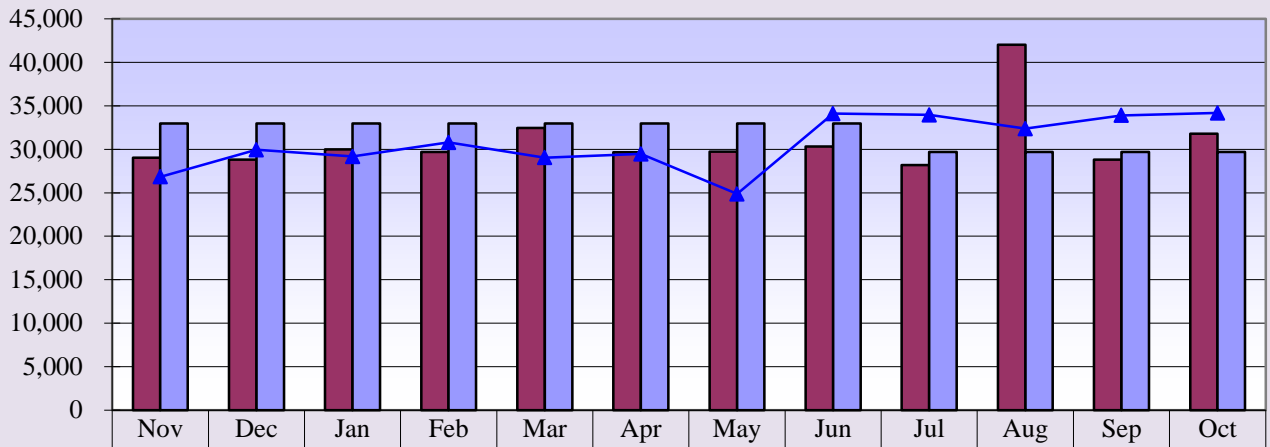


**Curr. 12 mo. avg. = 194**

**Prev. 12 mo. avg. = 186**

**Memorial Hospital of Converse County  
Lab Procedures and Other X-Ray Exams  
Oct. 2016**

**Lab Procedures**

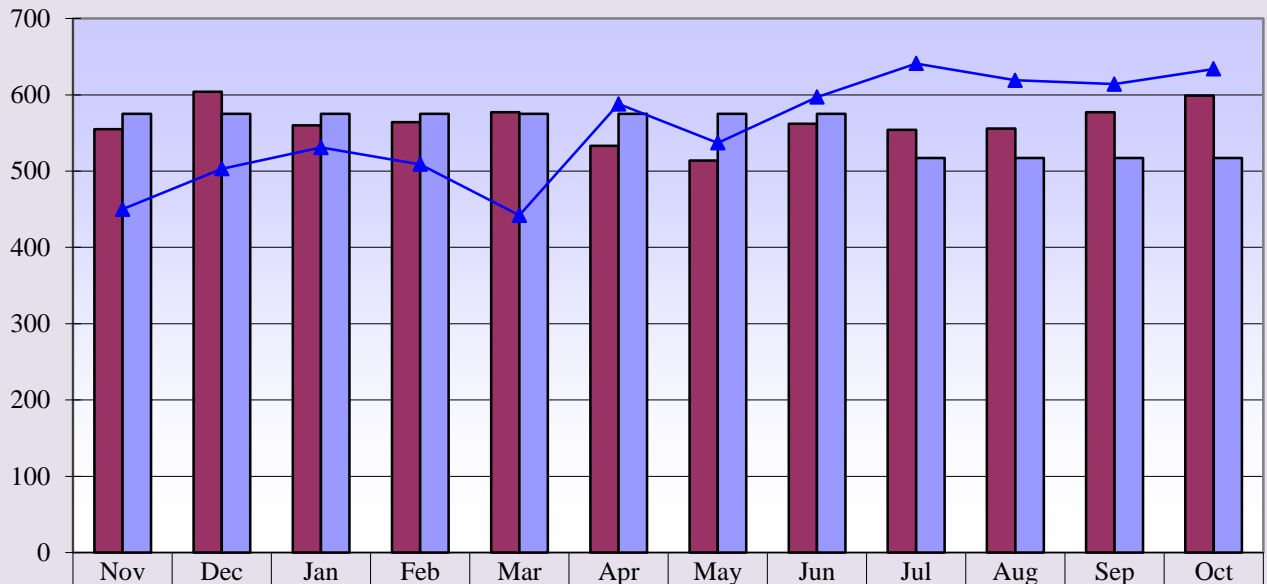


<b>Curr. 12 mo.</b>	29,028	28,811	29,995	29,694	32,443	29,662	29,729	30,331	28,170	42,038	28,795	31,807
<b>Current Budget</b>	32,981	32,981	32,981	32,981	32,981	32,981	32,981	32,981	29,682	29,682	29,682	29,682
<b>Prev. 12 mo.</b>	26,829	29,939	29,174	30,794	29,041	29,470	24,854	34,102	33,960	32,375	33,895	34,186
<b>×</b>												

**Curr. 12 mo. avg. = 30,875**

**Prev. 12 mo. avg. = 30,718**

**Total Other X-Ray Exams**



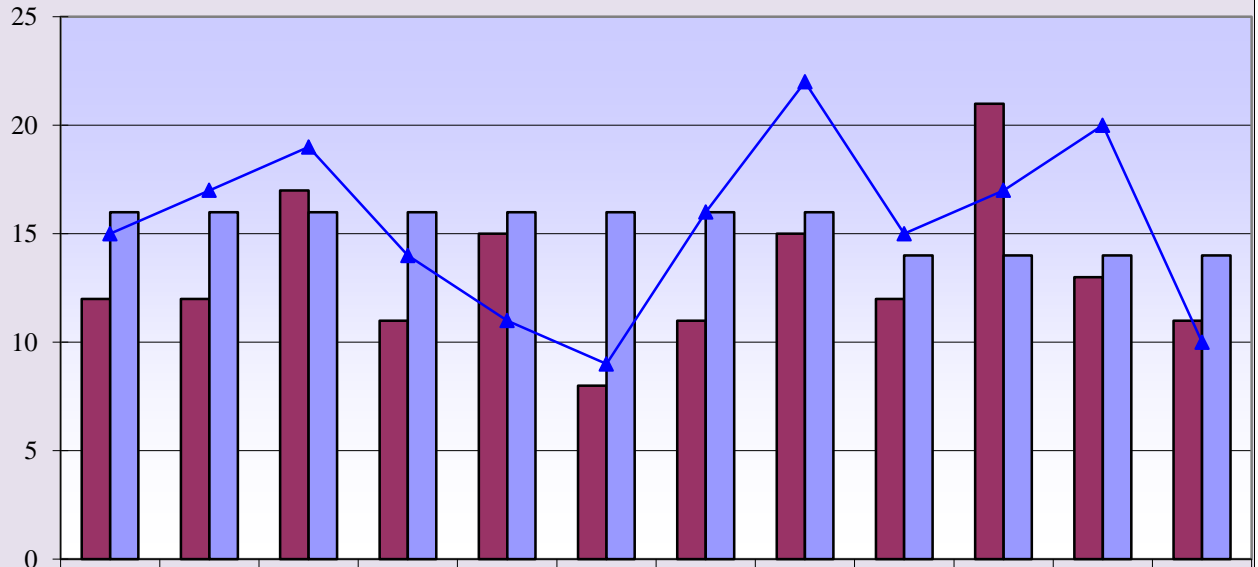
<b>Curr. 12 mo.</b>	555	604	560	564	577	533	514	562	554	556	577	599
<b>Current Budget</b>	575	575	575	575	575	575	575	575	517	517	517	517
<b>Prev. 12 mo.</b>	450	503	531	509	442	588	537	597	641	619	614	634

**Curr. 12 mo. avg. = 563**

**Prev. 12 mo. avg. = 555**

**Memorial Hospital of Converse County  
Newborns and Net A/R Days  
Oct. 2016**

**Newborns**

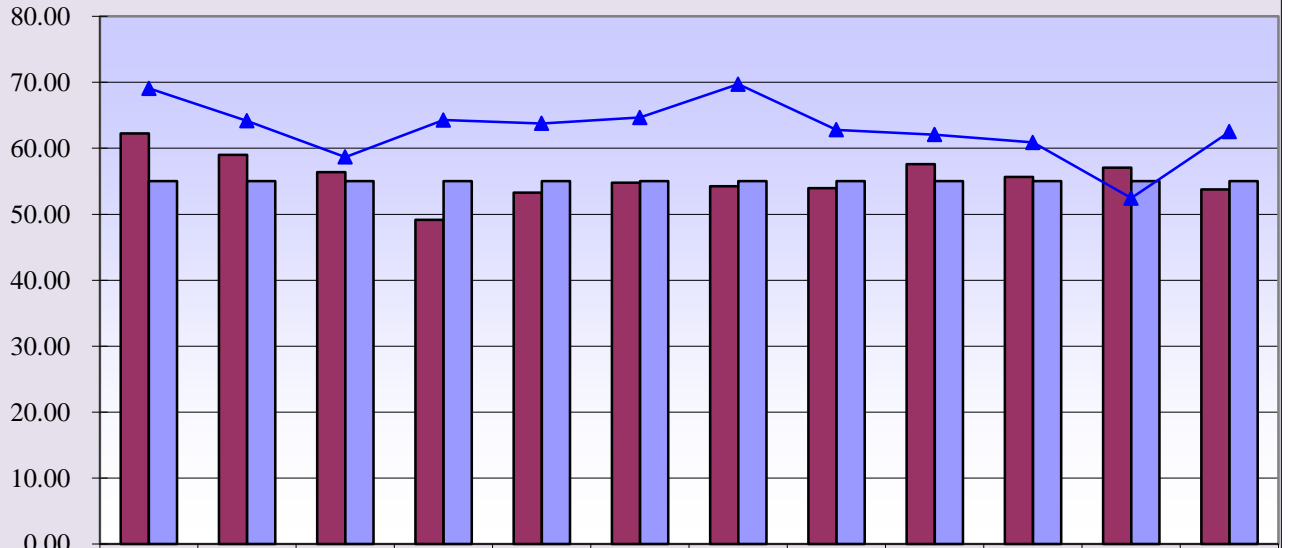


■ Curr. 12 mo.	12	12	17	11	15	8	11	15	12	21	13	11
■ Current Budget	16	16	16	16	16	16	16	16	14	14	14	14
▲ Prev. 12 mo.	15	17	19	14	11	9	16	22	15	17	20	10

**Curr. 12 mo. avg. = 13**

**Prev. 12 mo. avg. = 15**

**Net Days of Revenue in A/R**

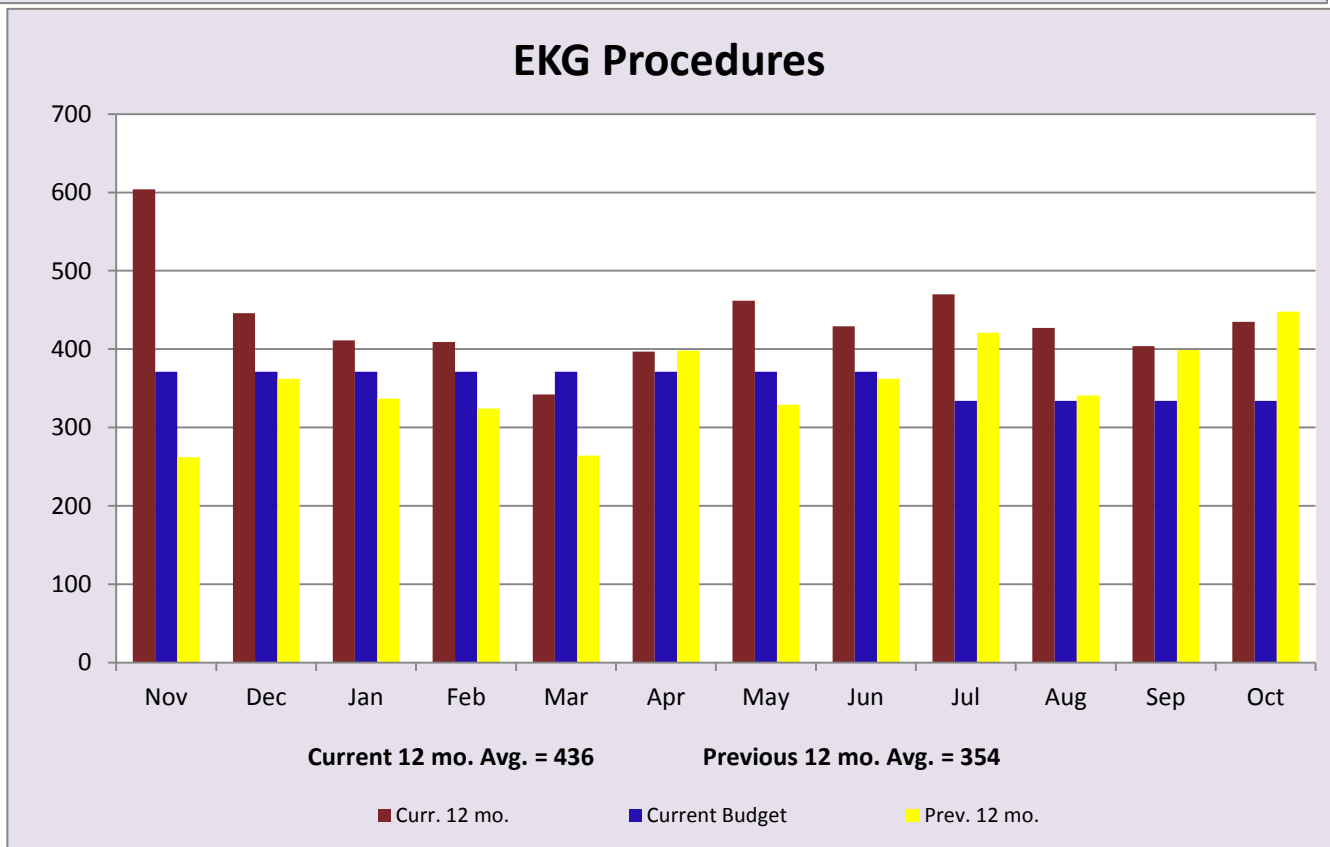
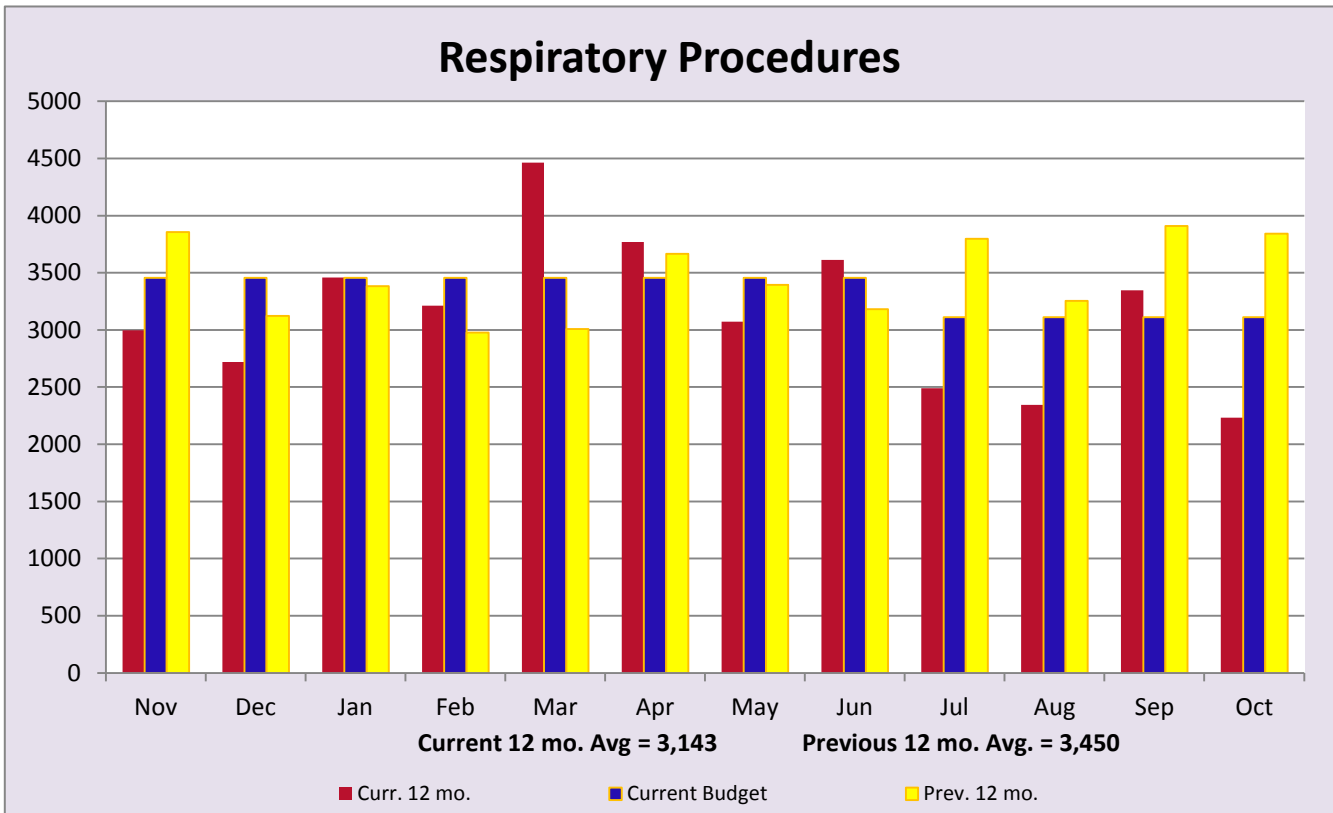


■ Curr. 12 mo.	62.27	59.01	56.40	49.16	53.30	54.78	54.26	53.98	57.59	55.66	57.08	53.74
■ Current Budget	55.00	55.00	55.00	55.00	55.00	55.00	55.00	55.00	55.00	55.00	55.00	55.00
▲ Prev. 12 mo.	69.09	64.15	58.68	64.29	63.76	64.67	69.70	62.80	62.07	60.87	52.45	62.51

**Curr. 12 mo. avg. = 55.60**

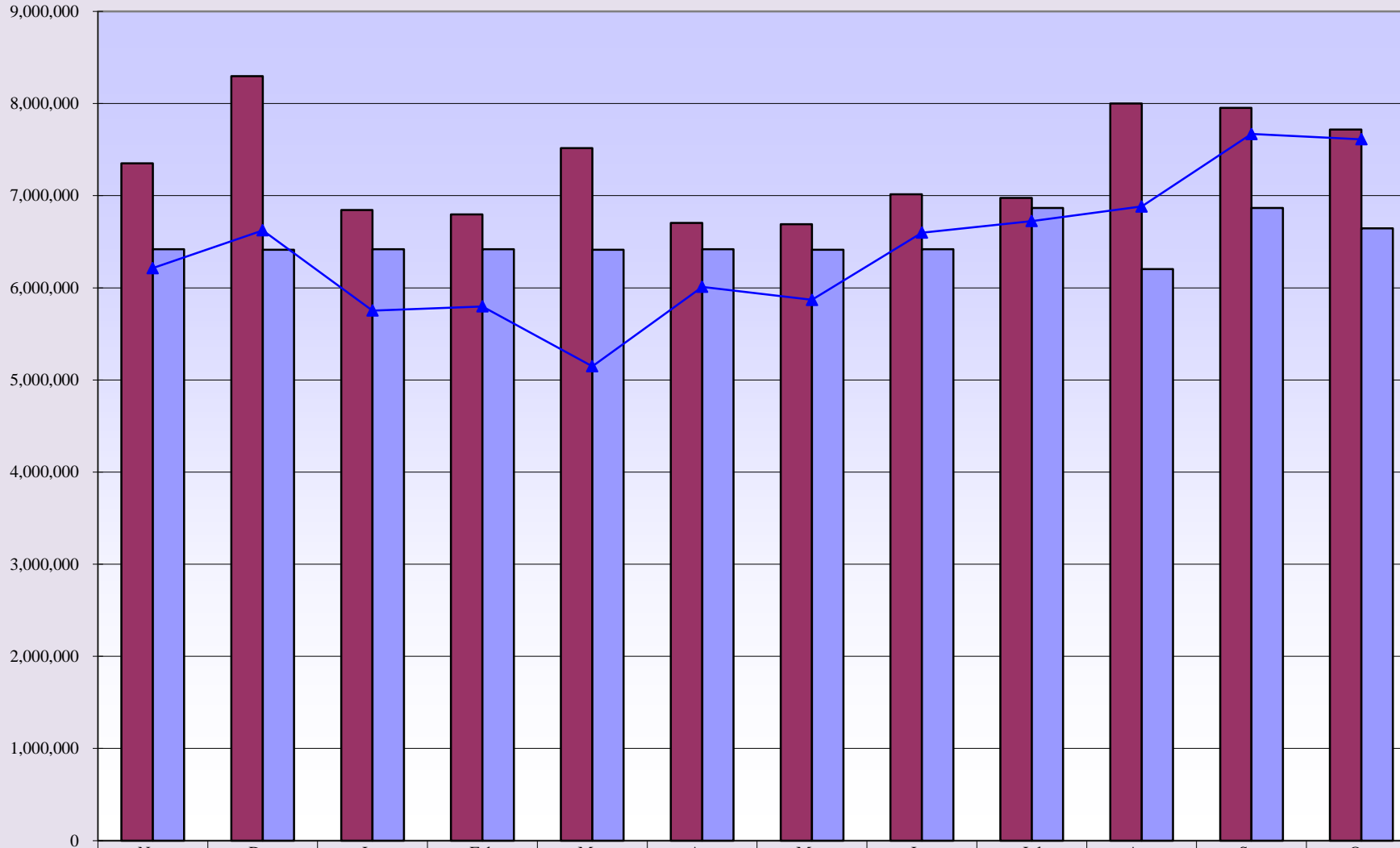
**Prev. 12 mo. avg. = 62.92**

Memorial Hospital of Converse County  
 Respiratory and EKG Procedures  
 Oct. 2016



**Memorial Hospital of Converse County  
Hospital Patient Revenues  
Oct. 2016**

**Hospital Patient Revenues**



**Curr. 12 mo. avg. = \$7,322,274**

**Prev. 12 mo. avg. = \$6,408,908**



**Memorial Hospital of Converse County  
Income Statement Summary  
Budget Variance Report**

<b>Current Month</b>			<b>Year to Date</b>			<b>Prior Year YTD</b>		
<b>Oct. 2016</b>	<b>Budget</b>	<b>Variance Amount</b>	<b>October</b>	<b>YTD Thru Oct. 2016</b>	<b>YTD Budget</b>	<b>Variance Amount</b>	<b>YTD Thru Oct. 2015</b>	<b>Change From Prior YTD</b>
			<b>Patient Revenue</b>					
\$2,006,558	\$1,767,130	\$239,428	<b>Inpatient</b>	\$8,020,106	\$7,068,478	\$951,628	\$7,425,443	\$594,663
4,312,024	3,511,485	800,539	<b>Outpatient</b>	17,170,986	14,045,934	3,125,052	15,881,618	1,289,368
1,398,601	1,366,601	32,000	<b>Physician Clinics</b>	5,458,404	5,466,408	(8,004)	5,583,734	(125,330)
\$7,717,183	\$6,645,216	\$1,071,967	<b>Total Patient Revenue</b>	\$30,649,496	\$26,580,820	\$4,068,676	\$28,890,795	\$1,758,701
			<b>Deductions From Revenue</b>					
1,053,617	616,439	437,178	<b>Medicare</b>	3,896,261	2,465,753	1,430,508	2,383,342	1,512,919
551,654	401,822	149,832	<b>Medicaid</b>	2,079,102	1,607,292	471,810	1,453,941	625,161
132,543	164,384	(31,841)	<b>Worker's Compensation</b>	509,501	657,535	(148,034)	445,620	63,881
837,609	579,794	257,815	<b>Other Contractuals</b>	2,724,738	2,319,181	405,557	2,446,940	277,798
188,011	155,429	32,582	<b>Other</b>	711,554	621,726	89,828	604,896	106,658
\$2,763,434	\$1,917,868	\$845,566	<b>Total Deductions</b>	\$9,921,156	\$7,671,487	\$2,249,669	\$7,334,739	\$2,586,417
4,953,750	4,727,348	226,402	<b>Net Patient Revenue</b>	20,728,340	18,909,333	1,819,007	21,556,056	(827,716)
117,827	129,637	(11,810)	<b>Other Operating Revenue</b>	430,267	518,546	(88,280)	293,085	137,182
\$5,071,577	\$4,856,985	\$214,592	<b>Total Operating Revenue</b>	\$21,158,606	\$19,427,879	\$1,730,727	\$21,849,141	(\$690,535)
			<b>Operating Expenses</b>					
2,522,559	2,365,924	156,635	<b>Salaries &amp; Wages</b>	9,552,732	9,463,704	89,028	9,512,732	40,000
542,031	583,834	(41,803)	<b>Benefits</b>	2,575,150	2,335,336	239,814	2,372,297	202,853
551,188	533,316	17,872	<b>Supplies</b>	2,270,562	2,133,291	137,271	2,351,673	(81,111)
86,580	99,852	(13,272)	<b>Lease &amp; Rentals</b>	394,124	399,402	(5,278)	321,934	72,190
121,668	96,327	25,341	<b>Other Expenses</b>	414,771	385,369	29,402	378,722	36,049
0	4,109	(4,109)	<b>Legal</b>	28,416	16,438	11,978	1,140	27,276
11,274	33,887	(22,613)	<b>Travel &amp; Education</b>	45,577	135,531	(89,954)	112,461	(66,884)
82,576	102,859	(20,283)	<b>Maintenance &amp; Repair</b>	419,532	411,444	8,088	446,575	(27,043)
6,702	16,932	(10,230)	<b>Physician Fees</b>	109,414	67,726	41,688	99,191	10,223
20,454	9,863	10,591	<b>Interest</b>	82,289	39,452	42,837	51,190	31,099
55,098	45,626	9,472	<b>Professional Fees</b>	186,923	182,503	4,420	206,211	(19,288)
114,684	110,707	3,977	<b>Purchased Services</b>	480,112	442,827	37,285	531,525	(51,413)
57,601	35,341	22,260	<b>Insurance</b>	130,639	141,369	(10,730)	133,458	(2,819)
50,941	48,185	2,756	<b>Utilities</b>	195,129	192,724	2,405	204,435	(9,306)
349,020	362,630	(13,610)	<b>Depreciation</b>	1,412,219	1,450,520	(38,301)	1,469,399	(57,180)
341,701	484,930	(143,229)	<b>Indigent Care</b>	2,304,135	1,939,727	364,408	2,432,645	(128,510)
\$4,914,078	\$4,934,322	(\$20,244)	<b>Total Expenses</b>	\$20,601,725	\$19,737,363	\$864,362	\$20,625,588	(\$23,863)
157,498	(77,337)	234,835	<b>Operating Income (Loss)</b>	556,881	(309,484)	866,365	1,223,553	(666,672)
			<b>Non-Operating Revenue</b>					
90,830	90,625	205	<b>County - Indigent Care Reimbursement</b>	363,089	362,500	589	437,750	(74,661)
30,208	30,208	0	<b>County - Ambulance Reimbursement</b>	120,833	120,833	0	180,000	(59,167)
41,412	34,027	7,385	<b>Other Non-Operating</b>	125,818	136,111	(10,293)	169,719	(43,901)
0	0	0	<b>Non-Operating Expense</b>	0	0	0	0	0
\$319,948	\$77,523	\$242,425	<b>Net Income/(Loss)</b>	\$1,166,621	\$309,960	\$856,661	\$2,011,022	(\$844,401)

**Memorial Hospital of Converse County**  
**Financial and Statistical Highlights**  
**Oct. 2016**

	<u>Page #</u>
<b>Patient Volumes</b>	
IP Daily Census.....	1-2
Surgeries.....	6-7
Radiology Exams.....	9-12
Laboratory Tests.....	12
Emer. Rm. Visits.....	5
Clinic Visits.....	
<b>Income Statement</b>	
Gross Patient Revenue for the month was \$7,717,000 compared to \$7,612,000 last October and \$7,954,000 last month. Net Income for October is \$319,000 compared to \$339,000 last year and \$436,000 last month.	15
<u>Monthly Revenue</u> - over budget by \$1,071,000	
The departments that are under budget by \$10,000 or more are as follows:	
Med/Surg - 18,000	
OB - 17,000	
Surgery - 81,000	
<u>Deductions From Revenue</u> - Over budget by \$845,000	
<u>Monthly Expense Variances</u> - Under budget by (\$20,000)	
<u>Areas that are over budget for the month</u>	
<u>Salaries &amp; Wages - 156,000</u>	<u>Supplies - 17,800</u>
<u>Other Expenses - 25,000</u>	Med/Surg - 4,100
Collection Expense- 4,000	Lab Blood - 4,400
Advertising - 34,000	Lab Non-Chargeable - 8,900
<u>Interest - 10,000</u>	Pharmacy Drugs - 27,000
Accrual for CD Loan	Physician Services Drugs - 14,000
<u>Purchased Services - 3,900</u>	<u>Professional Fees - 9,400</u>
Administration - 10,000	Physical Therapy - 13,000
Quality/Performance - 8,000	Orthopedic Dept - 6,000
<u>Utilities - 2,700</u>	<u>Insurance - 22,000</u>
Electricity - 3,000	Administration - 25,000
<b>Cash Status</b>	
Cash balances as of October 31, 2016 are \$12,317,496.	
This equates to 78.95 days of expenses on hand.	
<b>Accounts Receivable</b>	
Net Accounts Receivable days are at 53.74 days for the end of October compared to 62.10 last year and 57.08 last month.	

**Memorial Hospital of Converse County  
Statistics  
For The Period Ended October 31, 2016**

Monthly						Year to Date						
Oct. 2016	Oct. 2015	Variance From Prior Oct.	Budget	Amount	Variance %		YTD Thru Oct. 2016	YTD Thru Oct. 2015	Variance From Prior YTD	YTD Budget	Variance Amt.	%
71	78	(7)	67	4	6.0%	<b>A &amp; P Admissions - Regular -Swing Bed</b>	311	337	(26)	268	43	16.0%
7	2	5	4	3	75.0%		19	16	3	16	3	18.8%
78	80	(2)	71	7	9.9%	<b>Total A &amp; P Admissions</b>	330	353	(23)	284	46	16.2%
169	207	(38)	176	(7)	-4.0%	<b>A &amp; P Patient Days - Regular -Swing Bed</b>	823	904	(81)	704	119	16.9%
92	49	43	50	42	84.0%		217	218	(1)	200	17	8.5%
261	256	5	226	35	15.5%	<b>Total A &amp; P Patient Days</b>	1,040	1,122	(82)	904	136	15.0%
11	10	1	14	(3)	-21.4%	<b>Newborn - Admissions -Patients Days</b>	57	62	(5)	56	1	1.8%
16	15	1	23	(7)	-30.4%		103	103	0	92	11	12.0%
99	121	(22)	88	11	12.5%	<b>Surgeries</b>	372	435	(63)	352	20	5.7%
3,319	3,552	(233)	3,130	189	6.0%	<b>Outpatient Registrations ER Registrations</b>	13,289	13,592	(303)	12,520	769	6.1%
490	511	(21)	518	(28)	-5.4%		1,848	2,229	(381)	2,072	(224)	-10.8%
3,809	4,063	(254)	3,648	161	4.4%	<b>Total Registrations</b>	15,137	15,821	(684)	14,592	545	3.7%
316	330	(14)	334	(18)	-5.3%	<b>FTEs</b>	322	327	(5)	334	(12)	-3.5%

<b>Financial Ratios</b>	Oct. 2016	Oct. 2015	YTD	US	WY	<b>Misc. Measurements</b>	YTD - 16	YTD - 15	Variance From Prior Year	WY	Variance From WY
<b>Days Cash on Hand YTD</b>	79	72	N/A	69	107	<b>Total Revenue per FTE</b>	\$285,165	\$236,194	\$48,971	\$145,000	\$140,165
<b>Operating Margin</b>	3.10%	5.60%	2.63%	0.99%	0.77%	<b>Contractual Deductions</b>	32.36%	22.91%	9.45%	26.70%	5.66%
<b>Net Margin</b>	6.30%	9.20%	5.51%	2.51%	6.79%	<b>Inpatient Revenue %</b>	31.83%	35.68%	-3.85%	31.41%	0.42%
<b>Current Ratio</b>	4.44	4.72	N/A	2.29	3.89	<b>Outpatient Revenue %</b>	68.17%	64.32%	3.85%	66.90%	1.27%
<b>Gross A/R Days</b>	51.97	64.46				<b>Average Length of Stay</b>	2.71	3.24	(0.53)	3.30	(0.59)
<b>Net A/R Days</b>	53.74	62.10		54.20	57.94	<b>Medicare Inp. Payer Mix</b>	35.40%	34.02%	1.38%	31.00%	4.40%
<b>FTEs per Adjusted Occupied Bed - Excluding MOB</b>			12.12	With MOB	12.57	<b>Average I/P Daily Census</b>	6.69	6.61	0.08	3.50	3.19
<b>Medicare Rural Hospital Flexibility Program Monitoring Team - US CAH Median-2013</b>						<b>Salaries to Total Expense</b>	46.36%	48.76%	-2.40%	46.32%	0.04%
<b>Medicare Rural Hospital Flexibility Program Monitoring Team -WY CAH Medium-2013</b>						<b>Benefits as % of Salaries</b>	26.95%	21.62%	5.33%		

**Memorial Hospital of Converse County**

**Balance Sheet**

**October 31, 2016**

	<b>October 2016</b>	<b>October 2015</b>
<b>ASSETS</b>		
<b>CURRENT ASSETS</b>		
Cash On Hand And In Banks	\$5,604,032	\$3,703,815
Certificates Of Deposit - Unrestricted	213,465	104,257
<b>Total Cash Assets</b>	<b>\$5,817,496</b>	<b>\$3,808,072</b>
<b>Assets Whose Use is Restricted</b>		
Certificates of Deposit Securing Loan	6,500,000	7,500,000
Reserve Checking - CCB Contracts	0	12,413
<b>Total Restricted Assets</b>	<b>\$6,500,000</b>	<b>\$7,512,413</b>
Accounts Receivable (Gross)	12,944,964	15,564,417
Uncollectable Accts. & Contratual. Adj.	(3,892,557)	(4,173,292)
<b>Net Patient Accounts</b>	<b>\$9,052,407</b>	<b>\$11,391,125</b>
Due From Physicians/Staff	30,392	107,942
Inventories Of Supplies	965,457	991,458
Other Current Assets	942,435	3,865,615
Yellowstone Group Investment	123,452	0
<b>Total Current Assets</b>	<b>\$23,431,640</b>	<b>\$27,676,625</b>
<b>LAND, BUILDING AND EQUIPMENT, net</b>	<b>\$30,851,600</b>	<b>\$30,568,390</b>
<b>OTHER ASSETS</b>		
Investment - Big Country Rehab	238,473	199,449
<b>Total Other Assets</b>	<b>\$238,473</b>	<b>\$199,449</b>
<b>Total Assets</b>	<b>\$54,521,713</b>	<b>\$58,444,464</b>
<b>LIABILITIES AND FUND EQUITY</b>		
<b>CURRENT LIABILITIES</b>		
Accounts Payable	\$1,288,132	\$1,888,046
Accrued Salaries	2,188,490	2,026,325
Accrued Self Funded Health Insurance	(44,235)	0
Accrued Taxes And Deductions	795,346	788,856
Current Portion Of Notes Payable	276,659	144,589
Current Portion of CD Secured Note	800,000	1,000,000
Contingent Liability-(Patient Contracts)	0	12,413
<b>Total Current Liabilities</b>	<b>\$5,304,392</b>	<b>\$5,860,229</b>
<b>OTHER LIABILITIES</b>		
Long Term EIB Accrual	0	90,378
Deferred Loss On Early Retirement Of Bonds	(372,201)	(455,014)
Medicare Cost Report Settlement	0	0
Long Term CD Secured Note Obligations	6,055,275	6,500,000
Long Term Notes Payable	408,303	955,165
<b>Total Other Liabilities</b>	<b>\$6,091,377</b>	<b>\$7,090,529</b>
<b>Total Liabilities</b>	<b>\$11,395,768</b>	<b>\$12,950,758</b>
<b>FUND EQUITY</b>		
Fund Balance	\$41,959,323	\$43,482,683
Net Income	1,166,621	2,011,023
<b>Total Fund Balance</b>	<b>\$43,125,944</b>	<b>\$45,493,706</b>
<b>Total Liabilities And Fund Equity</b>	<b>\$54,521,713</b>	<b>\$58,444,464</b>

**Cash Flow Statement for October 2016 and FYTD 2017**

<b>Cash Flow From Operations</b>	<b><u>Oct. 2016</u></b>	<b><u>FYTD 2017</u></b>
Net Earnings/(Loss)	\$319,948	\$1,166,621
<b><u>Additions/(Subtractions) to Cash</u></b>		
Depreciation/Non-cash Interest	349,020	1,412,219
Decrease/(Increase) in Accounts Receivable	721,589	(1,345,630)
(Decrease)/Increase in Accounts Payable	371,899	(650,560)
Decrease/(Increase) in Inventory	11,854	(22,625)
<b>Net Cash Flow From Operations</b>	<u>\$1,774,310</u>	<u>\$560,025</u>
<b>Cash Flow from Capital Purchases</b>		
Equipment, Fixed Assets	(129,050)	(344,189)
Loan Advance	0	0
<b>Cash Flow from Financing</b>		
Notes Payable	<u>(22,487)</u>	<u>(871,723)</u>
<b>Cash Flow for the Month Ending:</b>	<b>Oct. 2016</b>	
	<u><u>\$1,622,773</u></u>	<u><u>(\$655,887)</u></u>