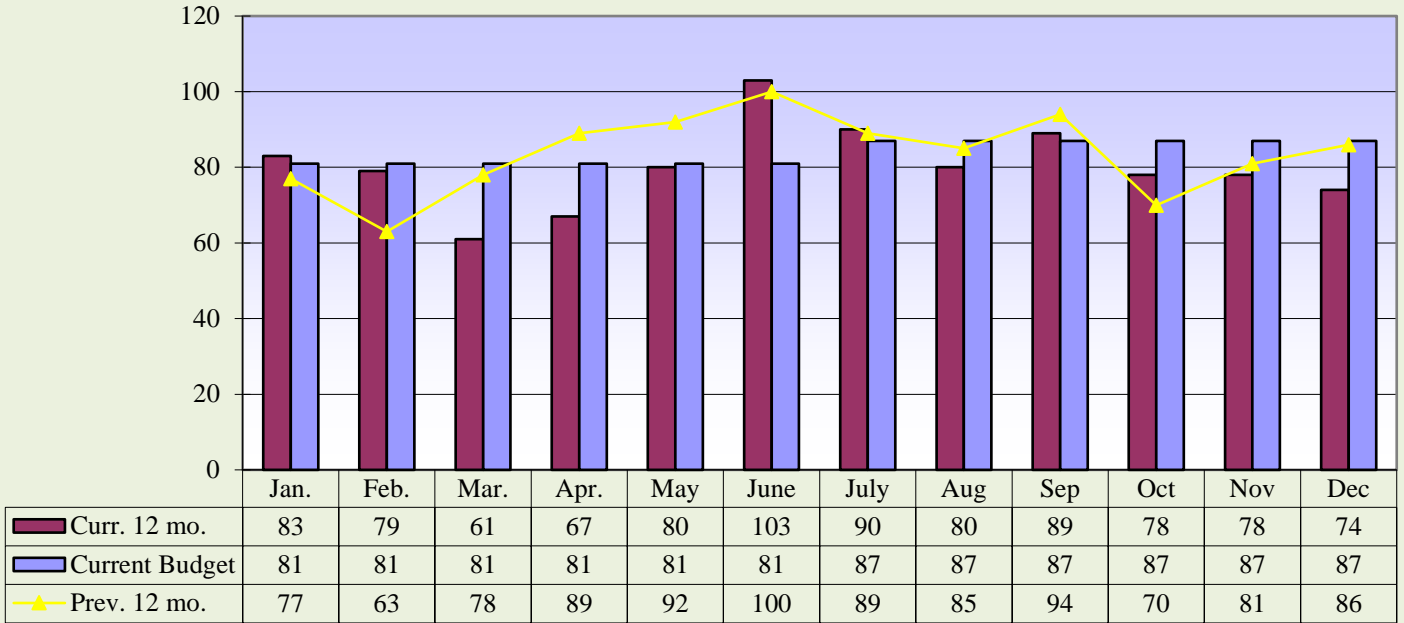


**Memorial Hospital of Converse County**  
**Financial and Statistical Packet**  
**Table of Contents - December 31, 2015**

	<u>Page #</u>
Admissions and Avg. IP Daily Census Graphs	1
Average Floor Census Breakdown Graph	2
Average Monthly Inpatient Admissions by Physician Graph	3
Average Length of Stay by Physician Graph	4
Payor Mix Comparisons and Emergency Room Visits Graphs	5
Total Surgeries and Orthopedic Surgeries Graphs	6
General and OB/GYN Surgery Graphs	7
Procedure Core Visits Graphs	8
Mammography Exams Graph	9
MRI and Cat Scan Graphs	10
Nuclear Medicine and Ultrasound Exams Graphs	11
Lab Procedures and Other X-Ray Graphs	12
Newborns and Net Days of Revenue in A/R Graphs	13
Respiratory and EKG Procedures Graphs	14
Hospital Revenue Graph	15
Income Statement and Budget Variance Report	16
Financial and Statistical Highlights	17
Statistics (Ratios - Productivity Indicators)	18
Balance Sheet	19
Cash Flow Statement	20

**Memorial Hospital of Converse County  
Admissions and Avg. IP Daily Census  
Dec. 2015**

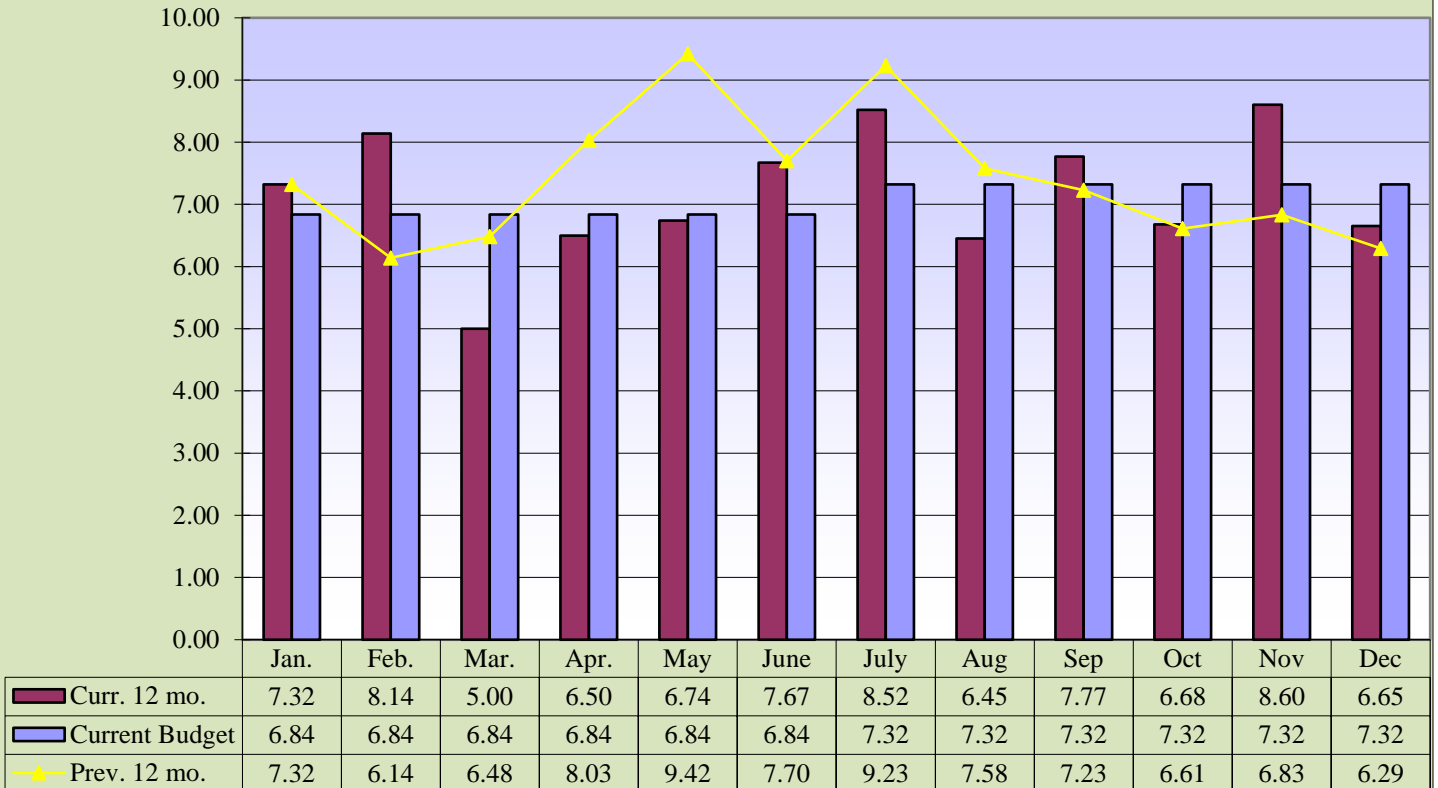
**Admissions**



**Current 12 mo. avg. = 80**

**Previous 12 mo. avg. = 84**

**Average IP Daily Census**

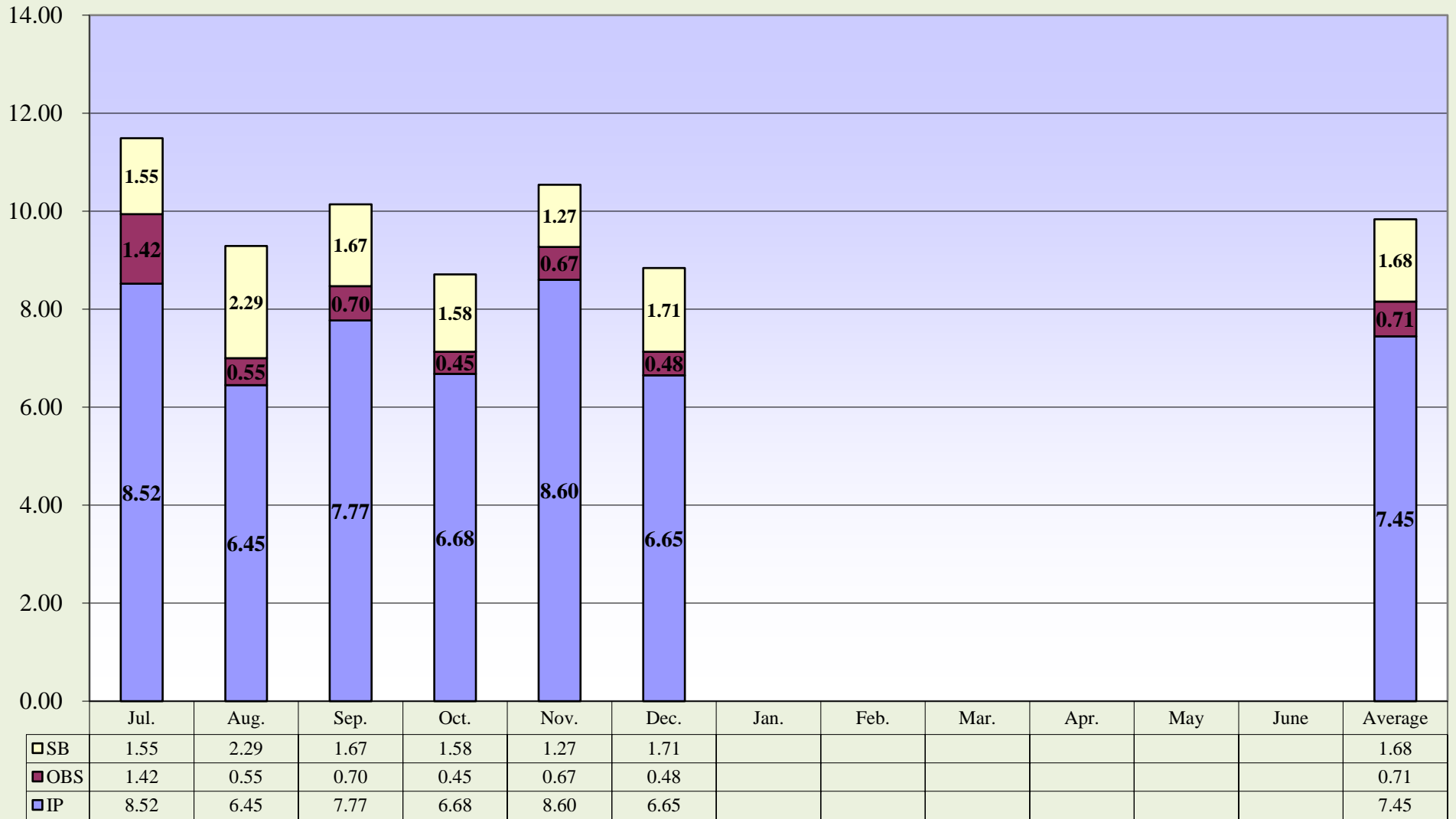


**Curr. 12 mo. avg. = 7.17**

**Prev. 12 mo. avg. = 7.41**

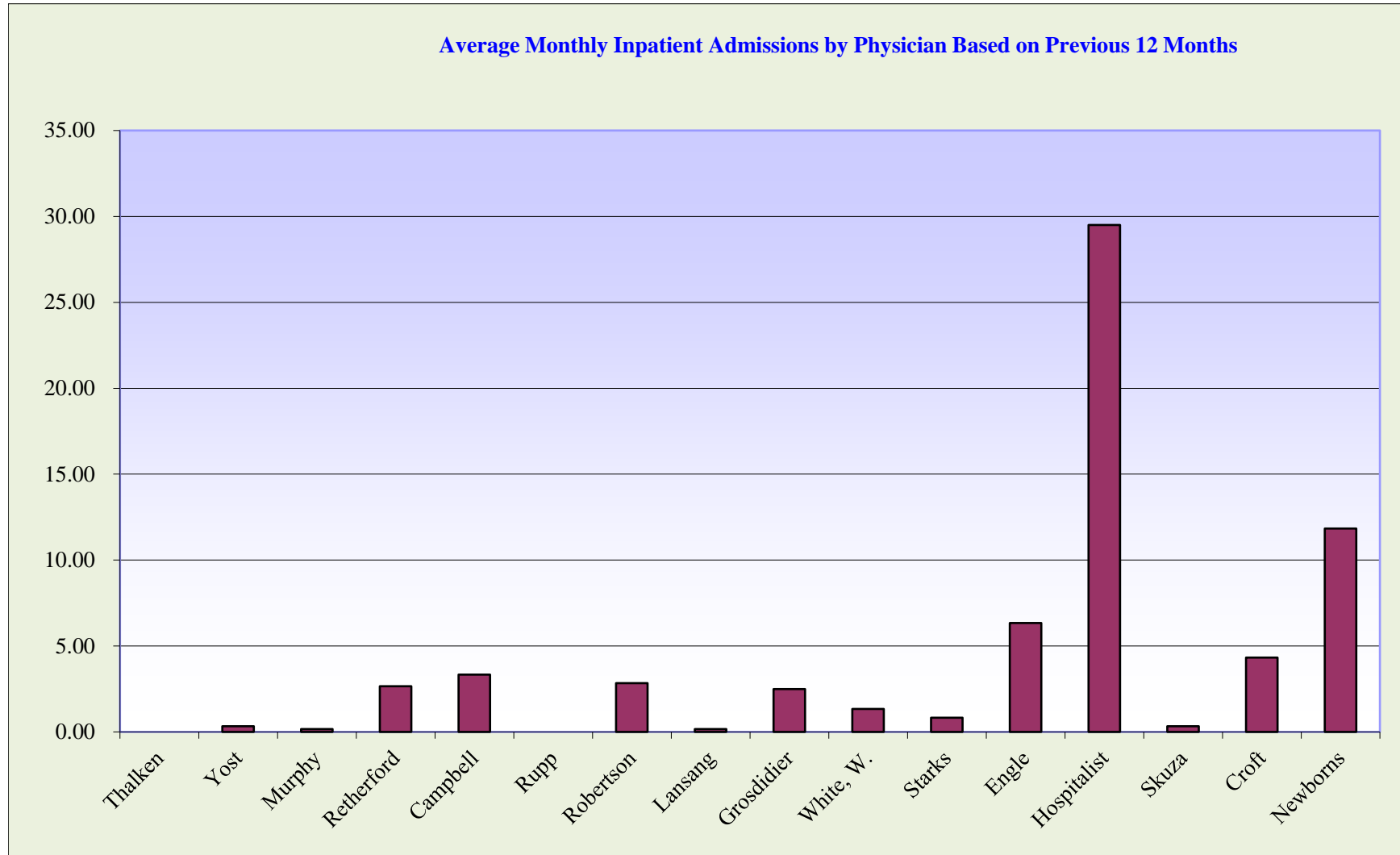
Memorial Hospital of Converse County  
 (FY 2016) Average Floor Census Breakdown  
 Dec. 2015

## (FY 2016) Average Floor Census Breakdown



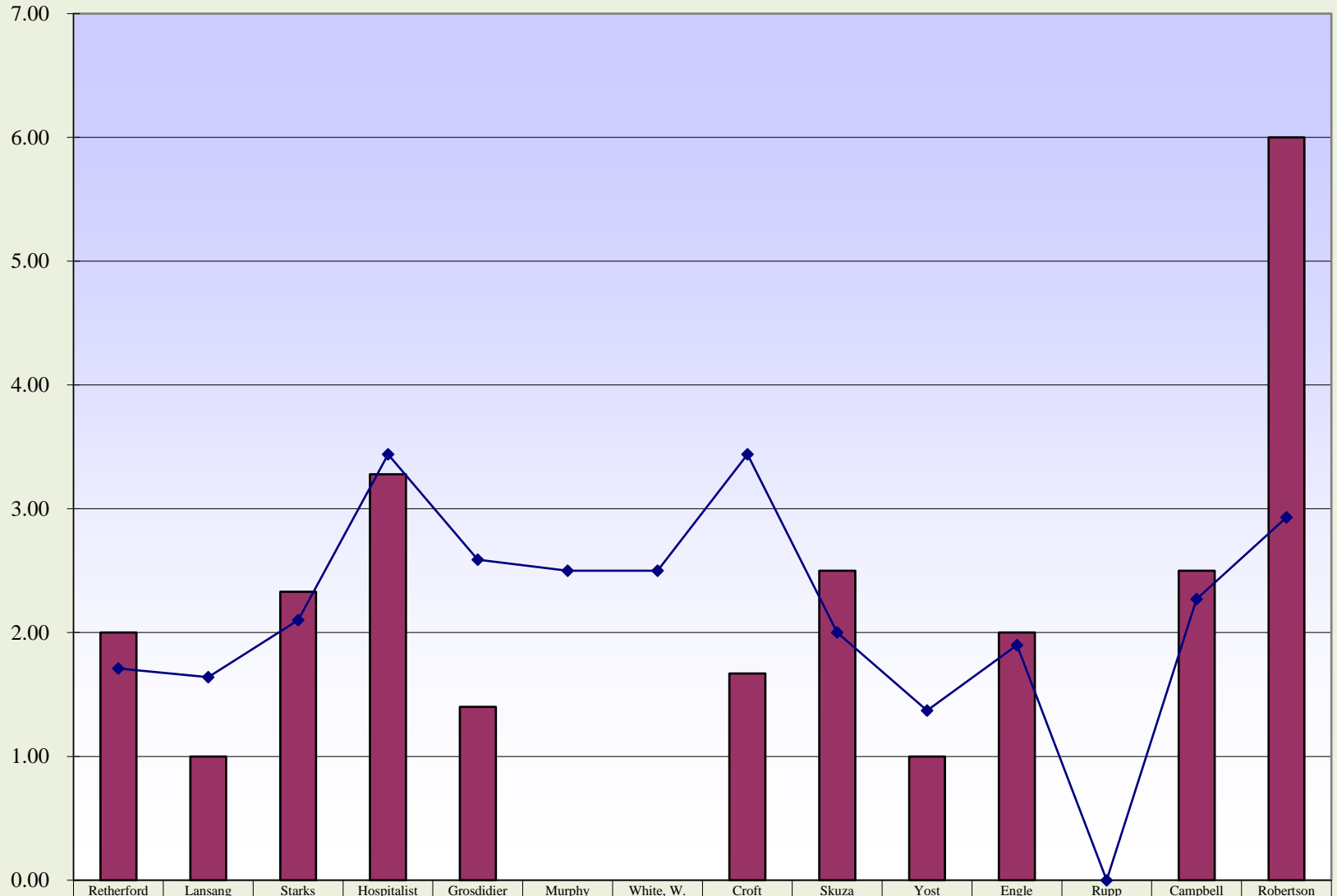
IP
  OBS
  SB

**Memorial Hospital of Converse County  
Average Monthly Inpatient Admissions by Physician  
Dec. 2015**



**Memorial Hospital of Converse County  
Average Length of Stay by Physician  
Dec. 2015**

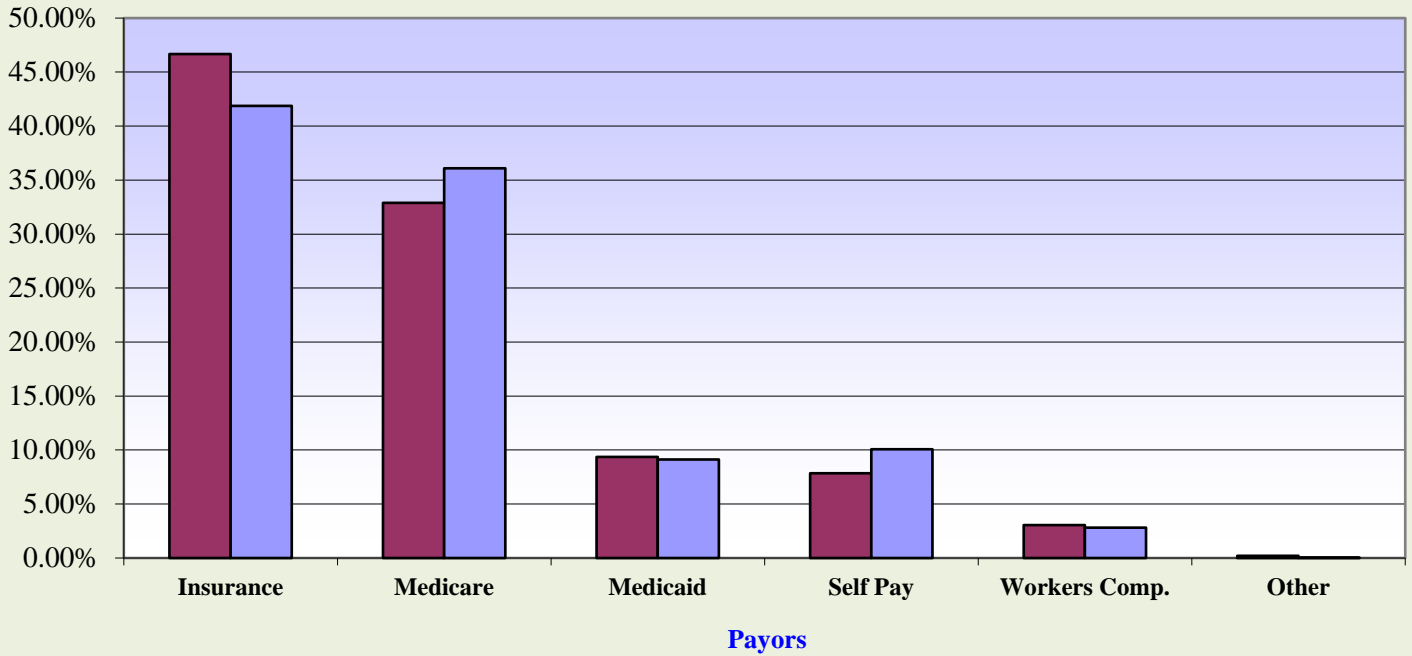
**Average Length of Stay by Physician for Fiscal Year 2016**



■ Current Month Avg. Length of Stay 0.00	Retherford	Lansang	Starks	Hospitalist	Grosdidier	Murphy	White, W.	Croft	Skuza	Yost	Engle	Rupp	Campbell	Robertson
◆ YTD FY 2016 Avg. Length of Stay 0.00	2.00	1.00	2.33	3.28	1.40	0.00	0.00	1.67	2.50	1.00	2.00	0.00	2.50	6.00
	1.71	1.64	2.10	3.44	2.59	2.50	2.50	3.44	2.00	1.37	1.90	0.00	2.27	2.93

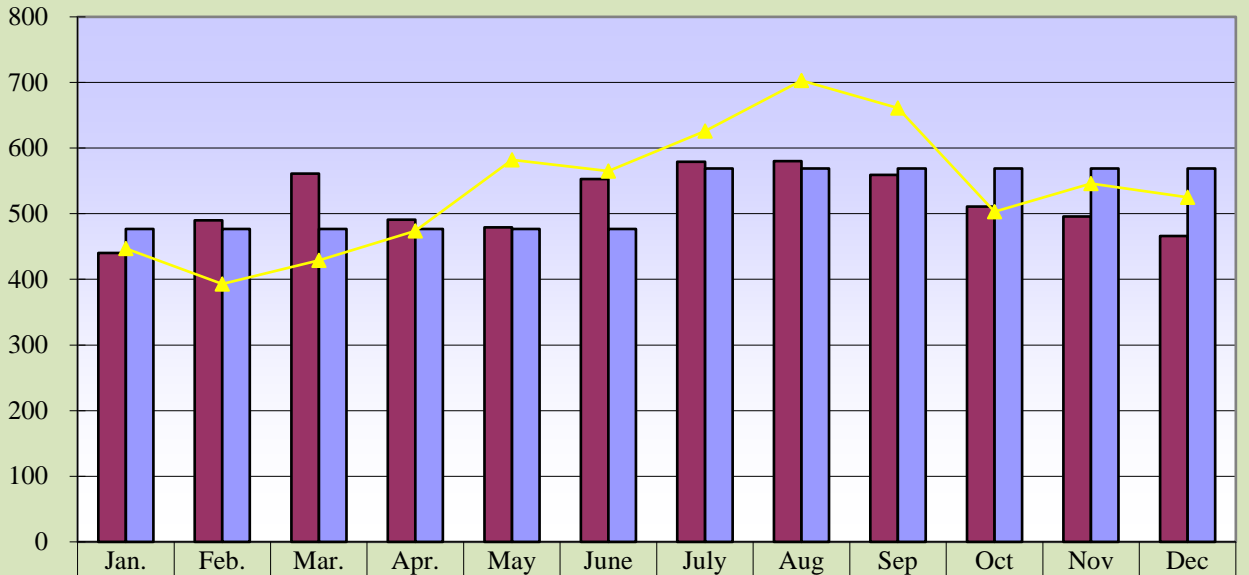
**Memorial Hospital of Converse County  
Payor Mix Comparisons and ER Visits  
Dec. 2015**

**Payor Mix Comparisons**



■ Fiscal Year 2016     
 ■ Fiscal Year 2015

**Emergency Room Visits**



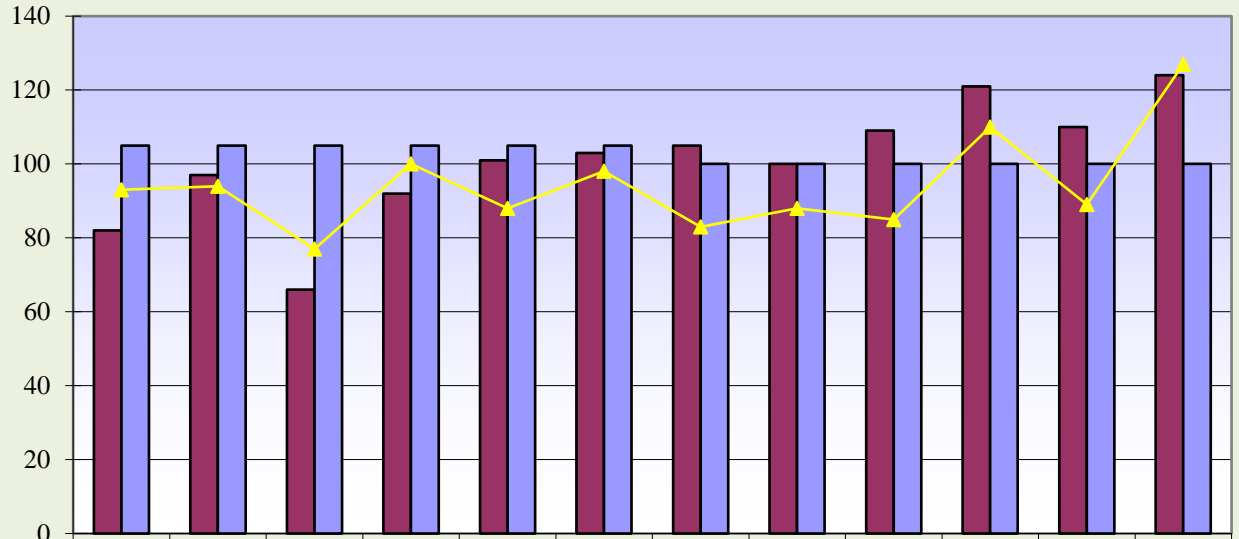
<span style="color: #800000;">■</span> Curr. 12 mo.	440	490	561	491	479	553	579	580	559	511	496	466
<span style="color: #6495ED;">■</span> Current Budget	477	477	477	477	477	477	569	569	569	569	569	569
<span style="color: #FFFF00;">▲</span> Prev. 12 mo.	447	393	429	474	582	565	626	703	661	503	546	525

**Curr. 12 mo. avg. = 517**

**Prev. 12 mo. avg. = 538**

**Memorial Hospital of Converse County  
Total Surgeries and Orthopedic Surgeries  
Dec. 2015**

**Total Surgeries**

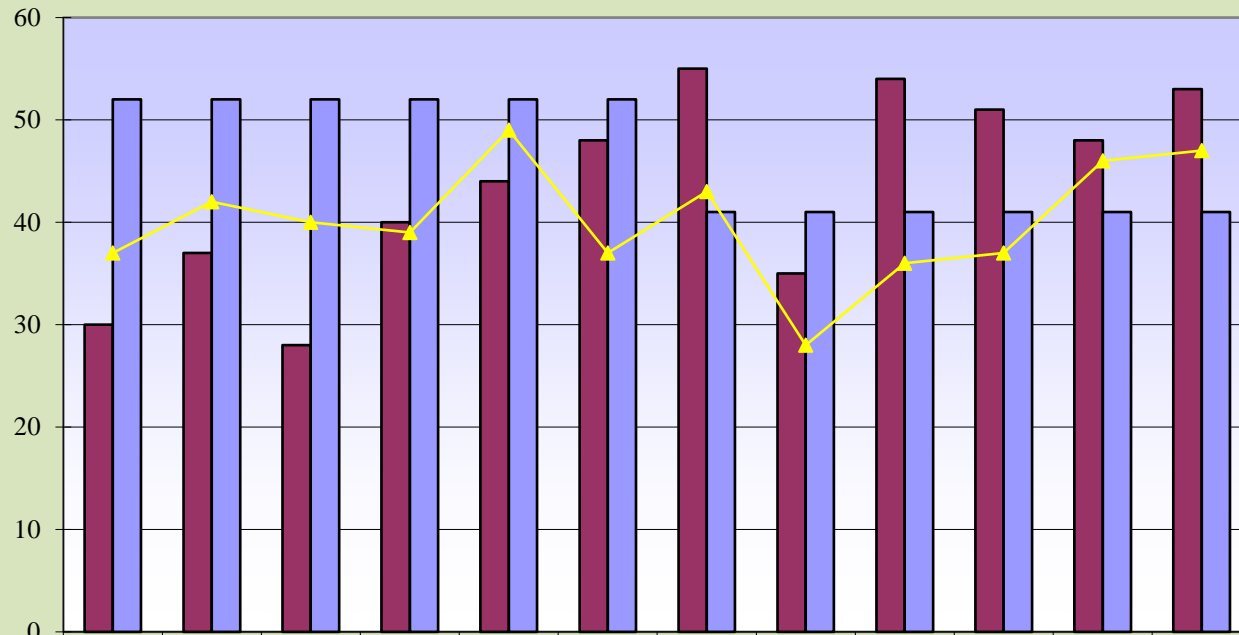


	Jan.	Feb.	Mar.	Apr.	May	June	July	Aug	Sep	Oct	Nov	Dec
Curr. 12 mo.	82	97	66	92	101	103	105	100	109	121	110	124
Current Budget	105	105	105	105	105	105	100	100	100	100	100	100
Prev. 12 mo.	93	94	77	100	88	98	83	88	85	110	89	127

**Current 12 mo. avg. = 101**

**Previous 12 mo. avg. = 94**

**Orthopedic Surgeries**



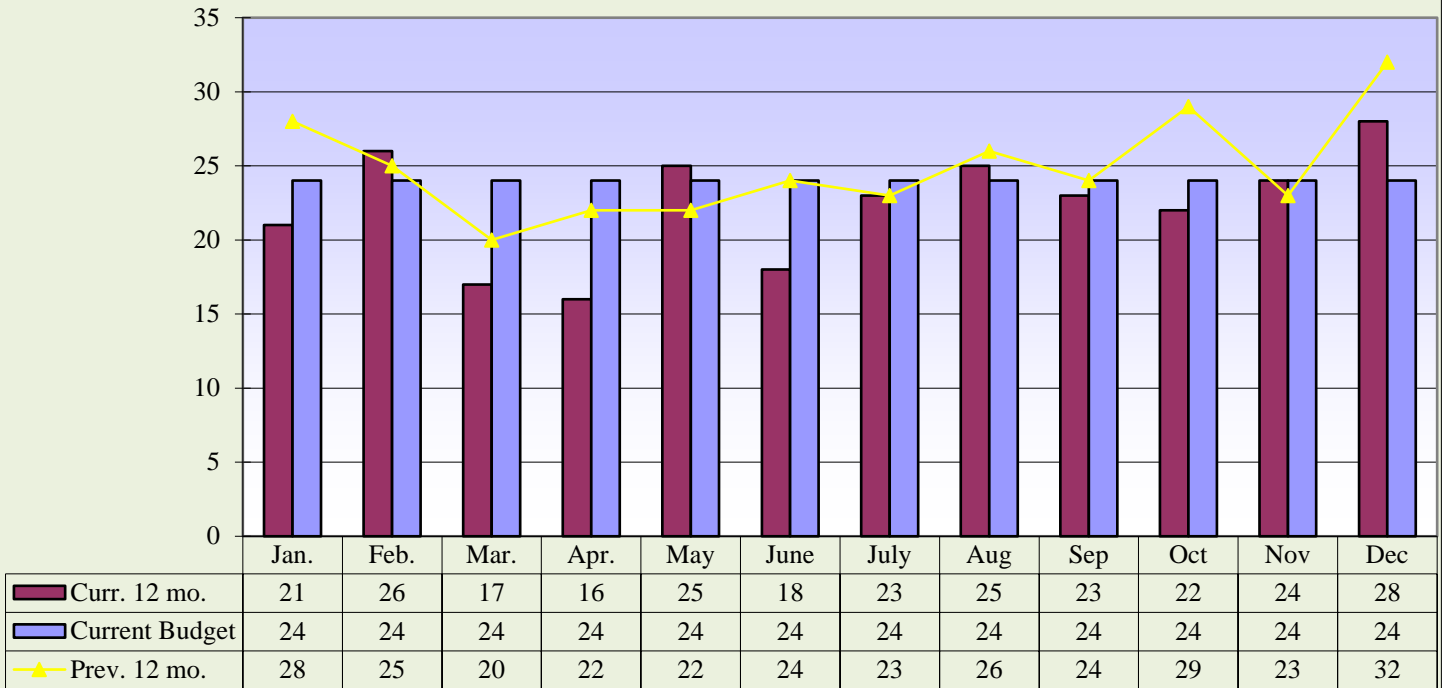
	Jan.	Feb.	Mar.	Apr.	May	June	July	Aug	Sep	Oct	Nov	Dec
Curr. 12 mo.	30	37	28	40	44	48	55	35	54	51	48	53
Current Budget	52	52	52	52	52	52	41	41	41	41	41	41
Prev. 12 mo.	37	42	40	39	49	37	43	28	36	37	46	47

**Curr. 12 mo. avg. = 44**

**Prev. 12 mo. avg. = 40**

**Memorial Hospital of Converse County  
General and OB/GYN Surgeries  
Dec. 2015**

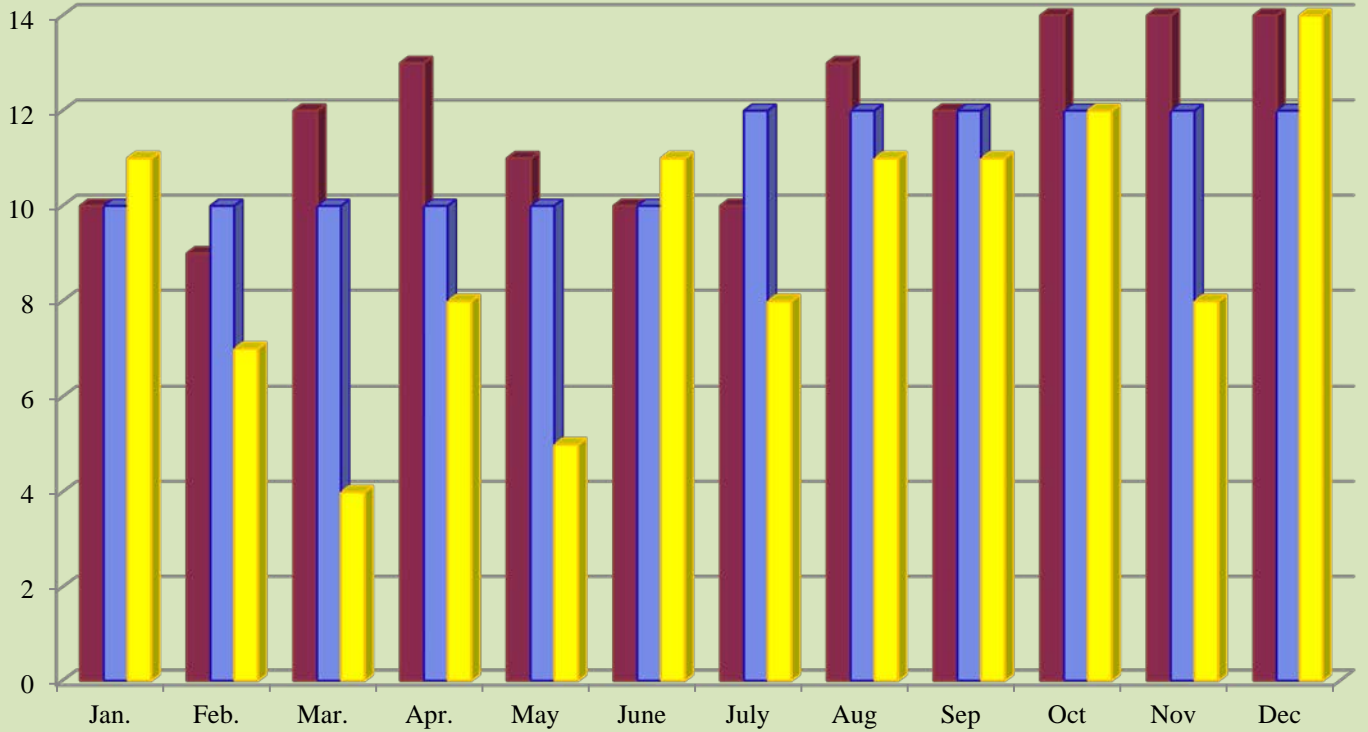
**General Surgeries**



**Curr. 12 mo. avg. = 22**

**Prev. 12 mo. avg. = 25**

**OB/GYN Surgeries**



**Curr. 12 mo. avg. = 12**

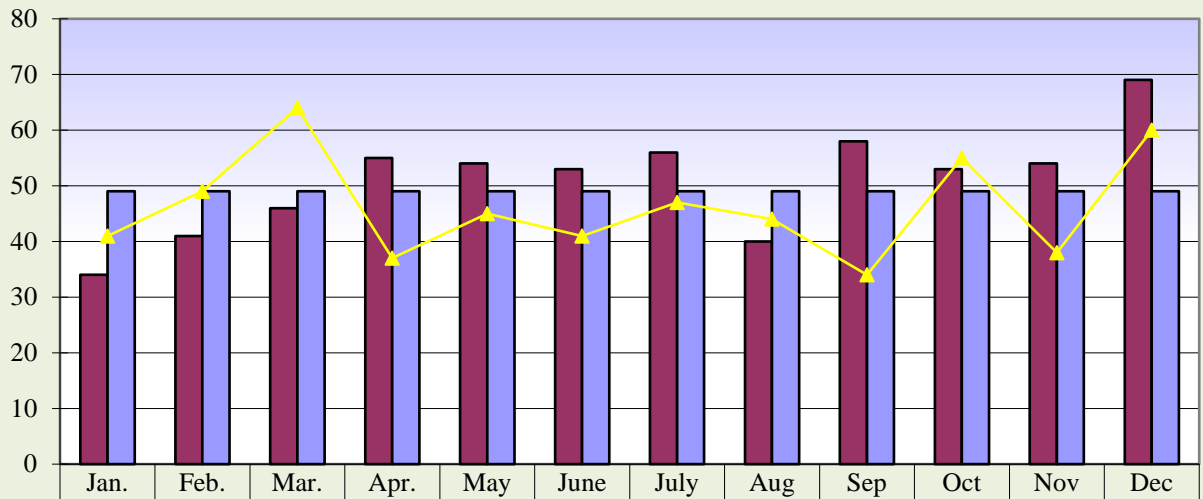
**Prev. 12 mo. avg. = 9**

**■ Curr. 12 mo.      ■ Current Budget      ■ Prev. 12 mo.**



**Memorial Hospital of Converse County  
Procedure Core Visits  
Dec. 2015**

**Procedure Core Visits**

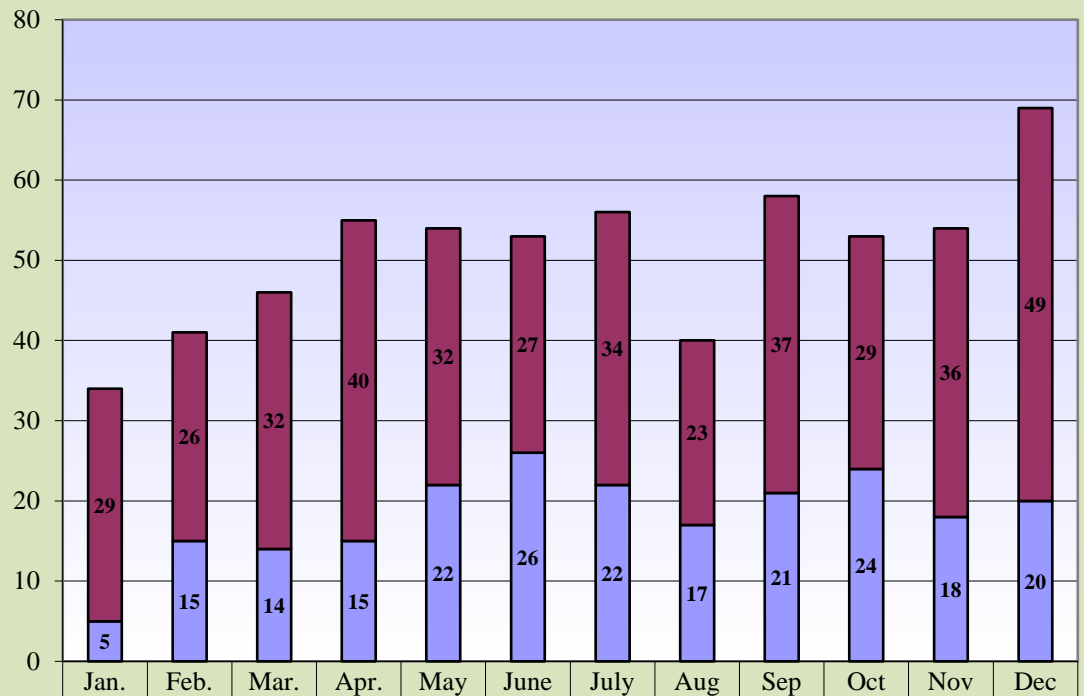


■ Curr. 12 mo.	34	41	46	55	54	53	56	40	58	53	54	69
■ Current Budget	49	49	49	49	49	49	49	49	49	49	49	49
▲ Prev. 12 mo.	41	49	64	37	45	41	47	44	34	55	38	60

**Curr. 12 mo. avg. = 51**

**Prev. 12 mo. avg. = 46**

**Procedure Core Visit Types**



■ Curr. 12 mo. Scopes	29	26	32	40	32	27	34	23	37	29	36	49
■ Curr. 12 mo. Minor Procedures	5	15	14	15	22	26	22	17	21	24	18	20

**Memorial Hospital of Converse County  
Mammography Exams  
Dec. 2015**

**Mammography Exams**



	Jan.	Feb.	Mar.	Apr.	May	June	July	Aug	Sep	Oct	Nov	Dec
<span style="color: maroon;">■</span> Curr. 12 mo.	70	95	85	81	72	97	103	122	108	126	120	111
<span style="color: blue;">■</span> Current Budget	94	94	94	94	94	94	93	93	93	93	93	93
<span style="color: yellow;">▲</span> Prev. 12 mo.	93	96	102	90	90	82	95	96	92	112	81	92

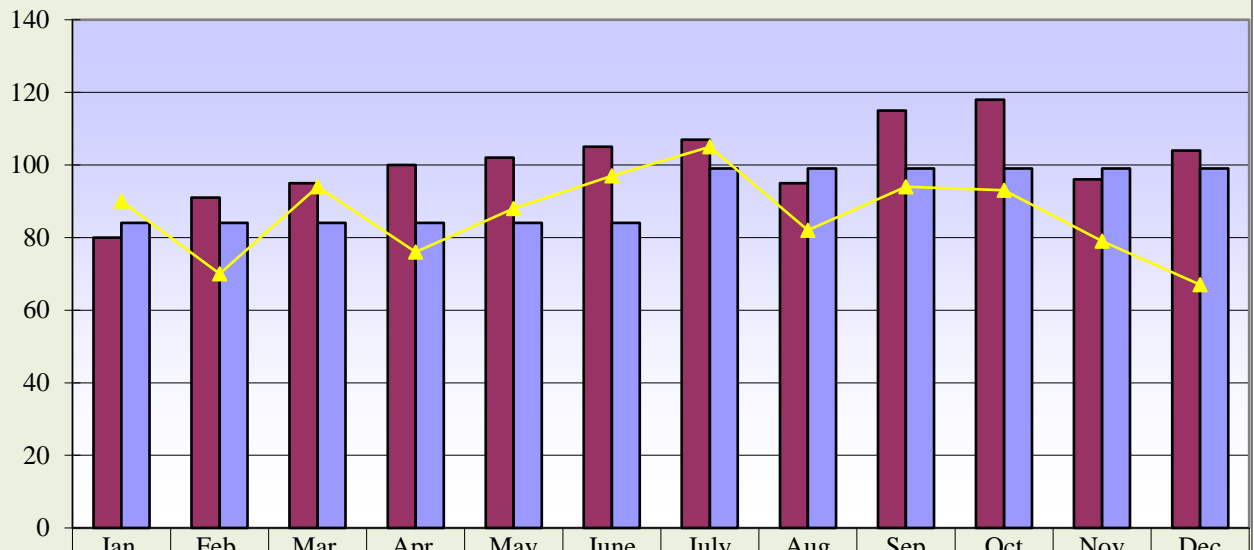
**Curr. 12 mo. avg. = 99**

**Prev. 12 mo. avg. = 93**



**Memorial Hospital of Converse County  
MRI & Cat Scans  
Dec. 2015**

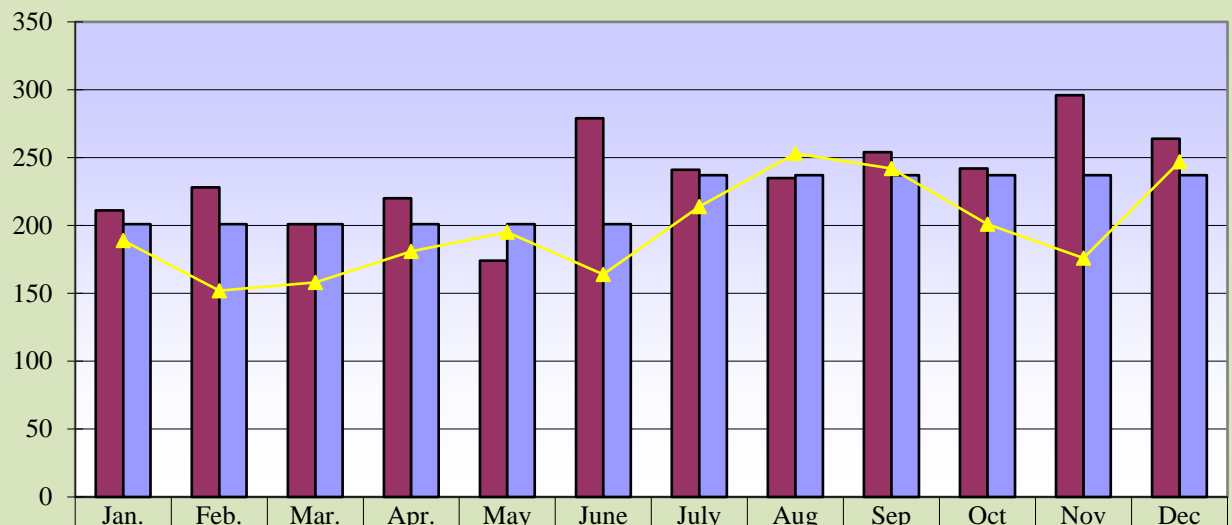
**MRI Exams**



**Curr. 12 mo. avg. = 101**

**Prev. 12 mo. avg. = 86**

**CT Exams**

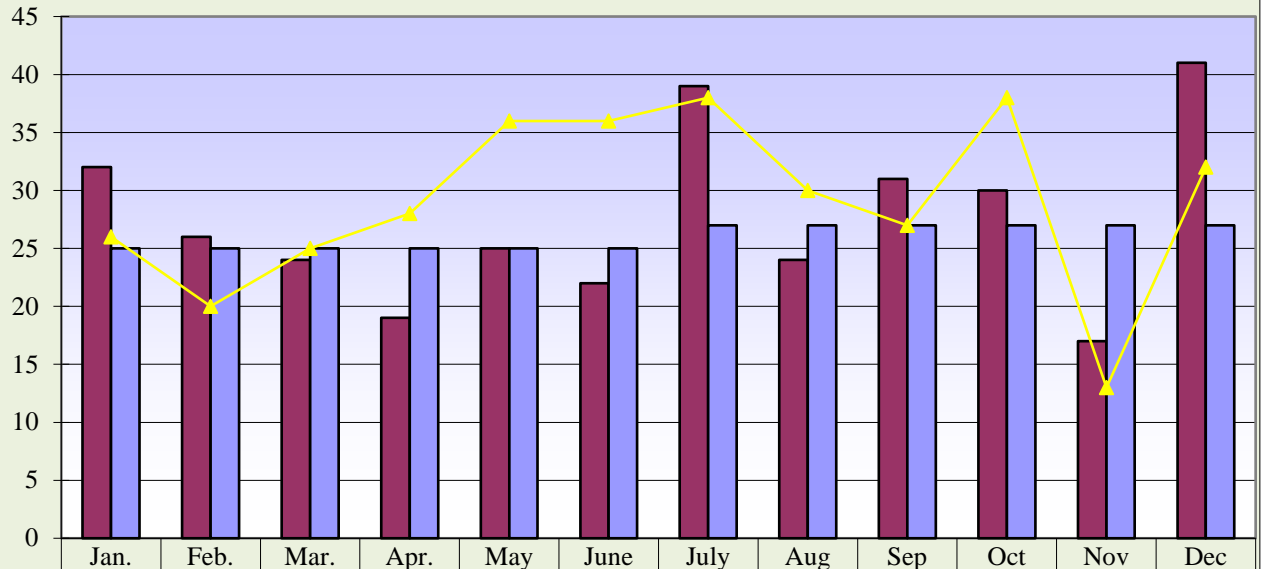


**Curr. 12 mo. avg. = 237**

**Prev. 12 mo. avg. = 198**

**Memorial Hospital of Converse County  
Nuclear Med and Ultrasound Exams  
Dec. 2015**

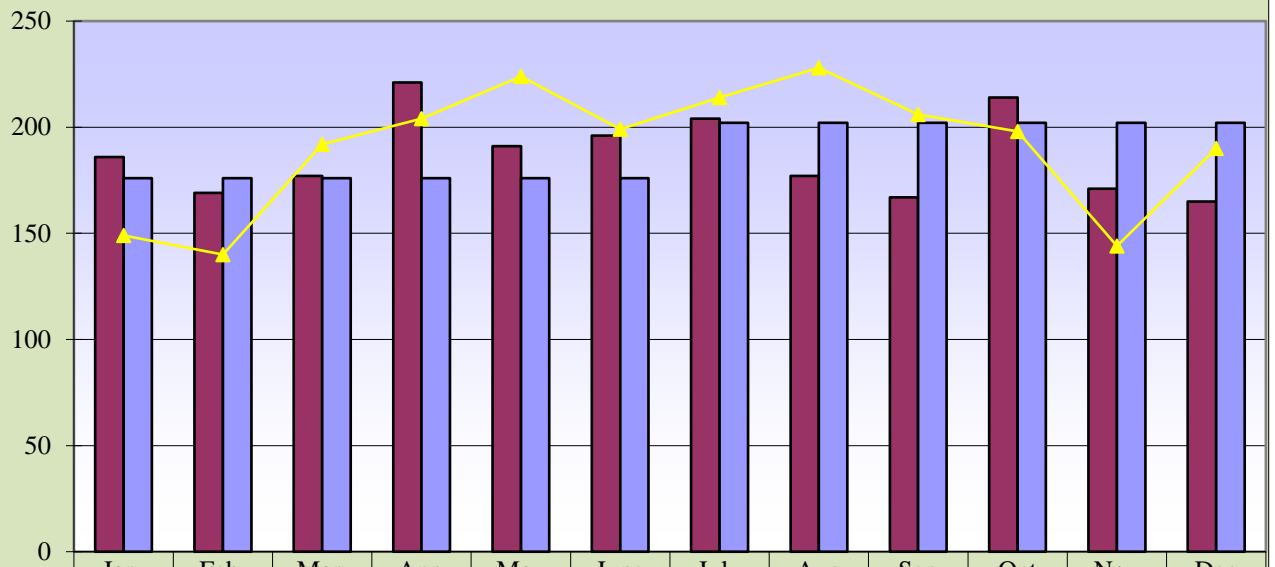
**Nuclear Medicine Exams**



**Curr. 12 mo. avg = 28**

**Prev. 12 mo. avg. = 29**

**Ultrasound Exams**

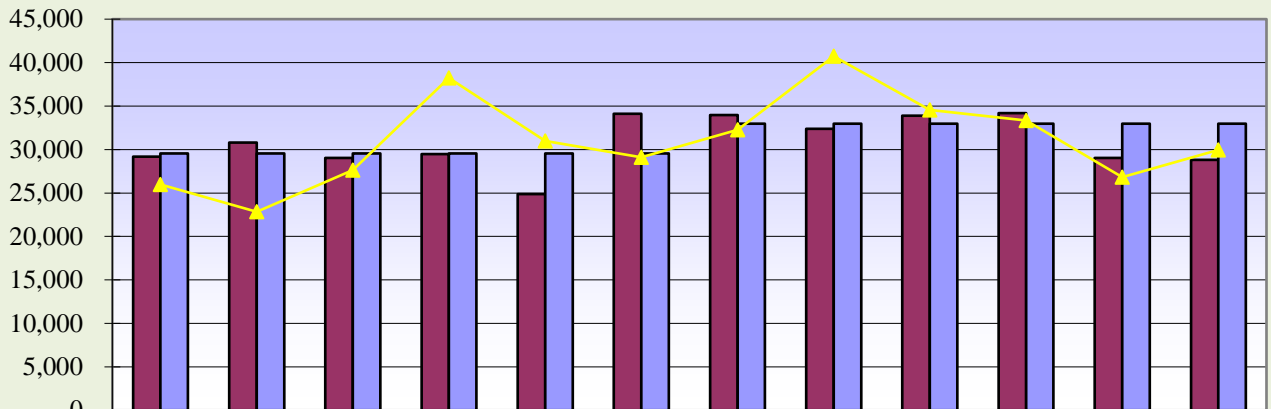


**Curr. 12 mo. avg. = 187**

**Prev. 12 mo. avg. = 191**

**Memorial Hospital of Converse County  
Lab Procedures and Other X-Ray Exams  
Dec. 2015**

**Lab Procedures**

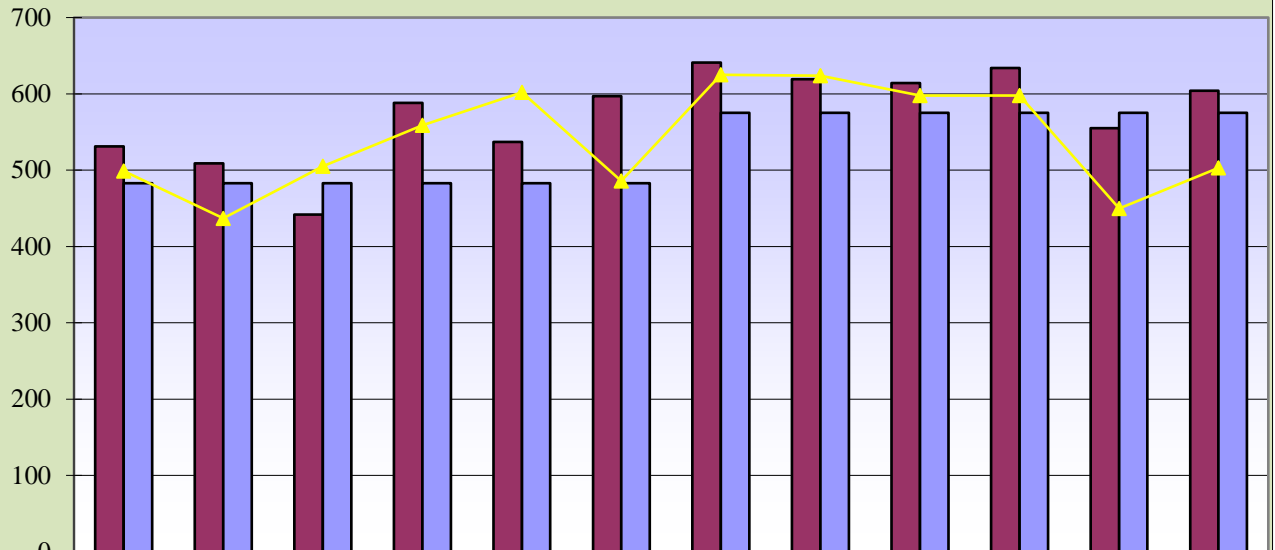


	Jan.	Feb.	Mar.	Apr.	May	June	July	Aug	Sep	Oct	Nov	Dec
Curr. 12 mo.	29,174	30,794	29,041	29,470	24,854	34,102	33,960	32,375	33,895	34,186	29,028	28,811
Current Budget	29,531	29,531	29,531	29,531	29,531	29,531	32,981	32,981	32,981	32,981	32,981	32,981
Prev. 12 mo.	25,973	22,836	27,622	38,230	30,980	29,091	32,256	40,728	34,548	33,336	26,829	29,939

**Curr. 12 mo. avg. = 30,808**

**Prev. 12 mo. avg. = 31,031**

**Total Other X-Ray Exams**



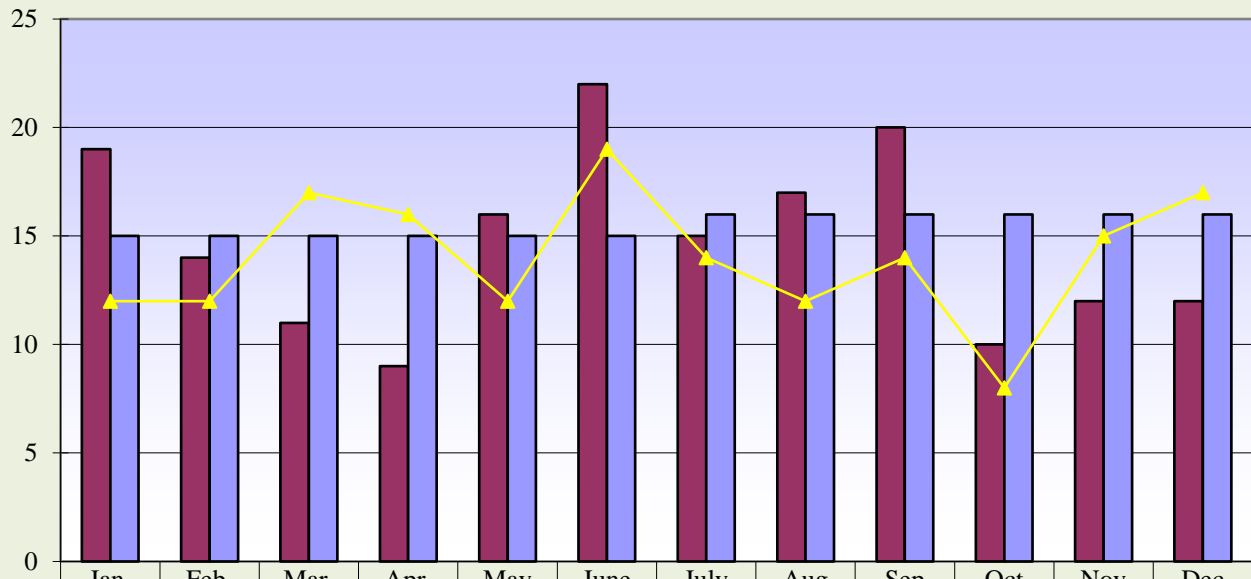
	Jan.	Feb.	Mar.	Apr.	May	June	July	Aug	Sep	Oct	Nov	Dec
Curr. 12 mo.	531	509	442	588	537	597	641	619	614	634	555	604
Current Budget	483	483	483	483	483	483	575	575	575	575	575	575
Prev. 12 mo.	499	437	505	559	602	486	625	624	598	598	450	503

**Curr. 12 mo. avg. = 573**

**Prev. 12 mo. avg. = 541**

**Memorial Hospital of Converse County  
Newborns and Net A/R Days  
Dec. 2015**

**Newborns**

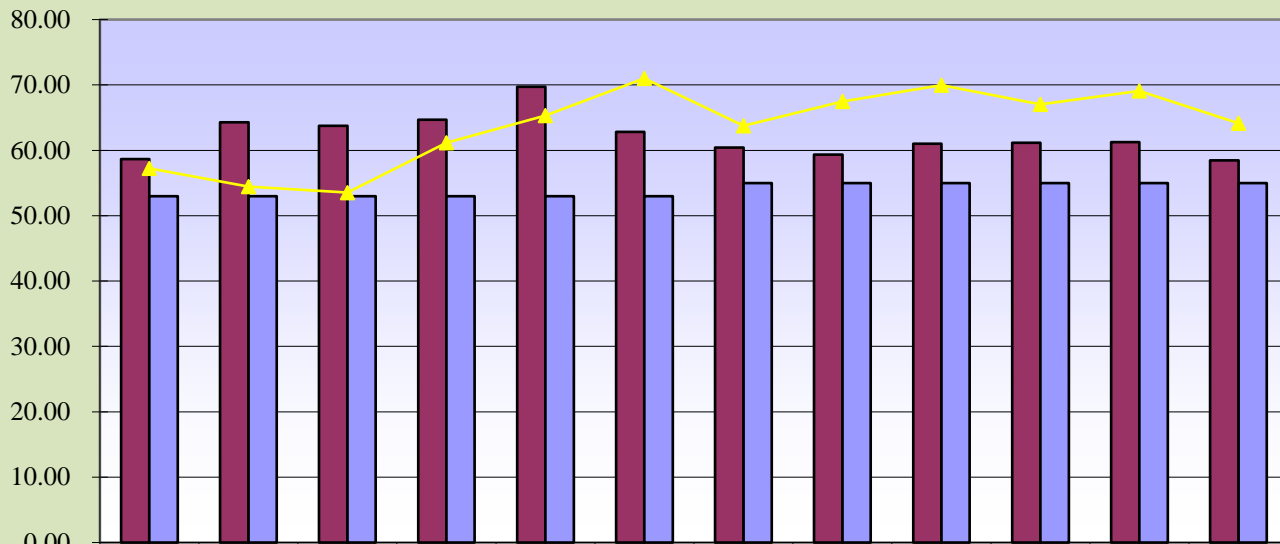


Curr. 12 mo.	19	14	11	9	16	22	15	17	20	10	12	12
Current Budget	15	15	15	15	15	15	16	16	16	16	16	16
Prev. 12 mo.	12	12	17	16	12	19	14	12	14	8	15	17

**Curr. 12 mo. avg. = 15**

**Prev. 12 mo. avg. = 14**

**Net Days of Revenue in A/R**



Curr. 12 mo.	58.68	64.29	63.76	64.67	69.70	62.80	60.41	59.35	61.01	61.16	61.26	58.46
Current Budget	53.00	53.00	53.00	53.00	53.00	53.00	55.00	55.00	55.00	55.00	55.00	55.00
Prev. 12 mo.	57.25	54.43	53.54	61.17	65.31	71.01	63.76	67.46	69.98	67.01	69.09	64.15

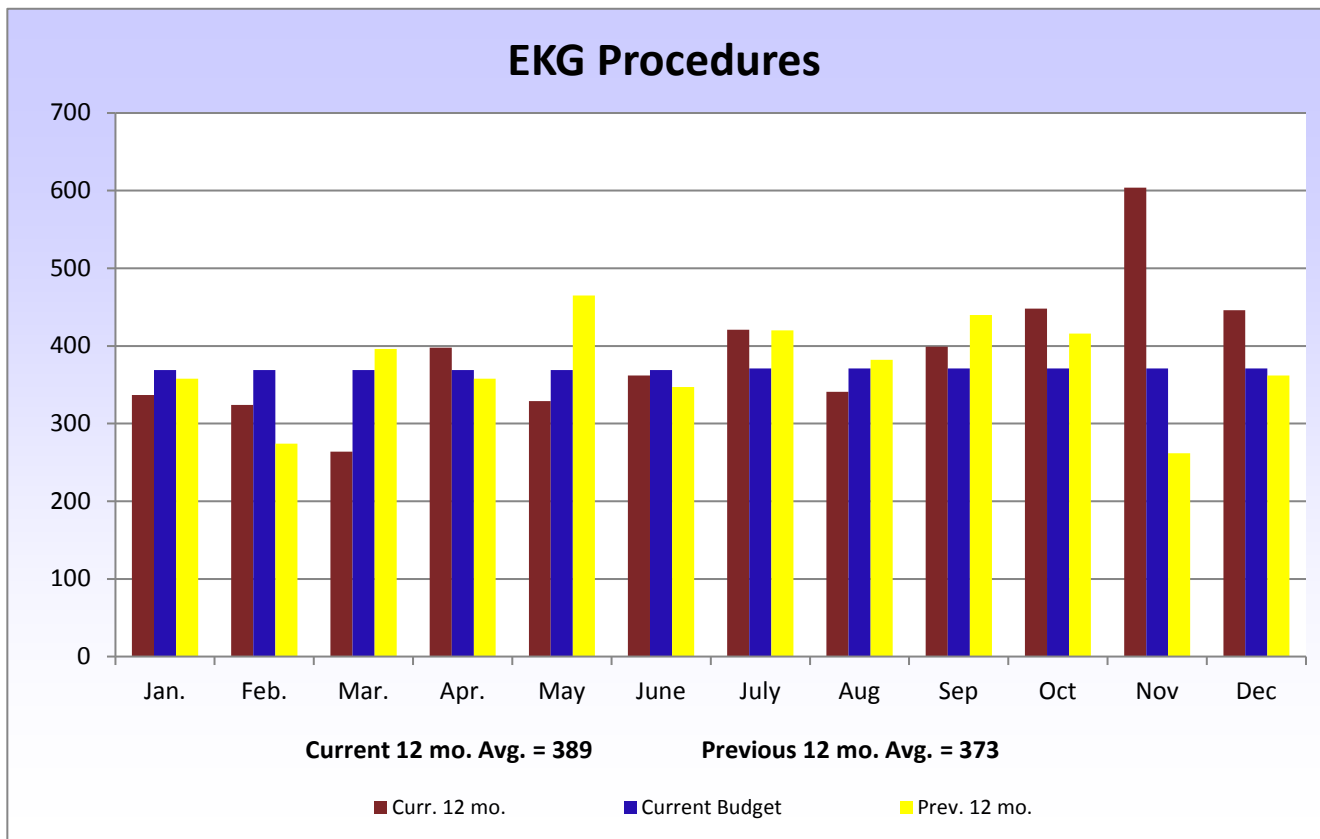
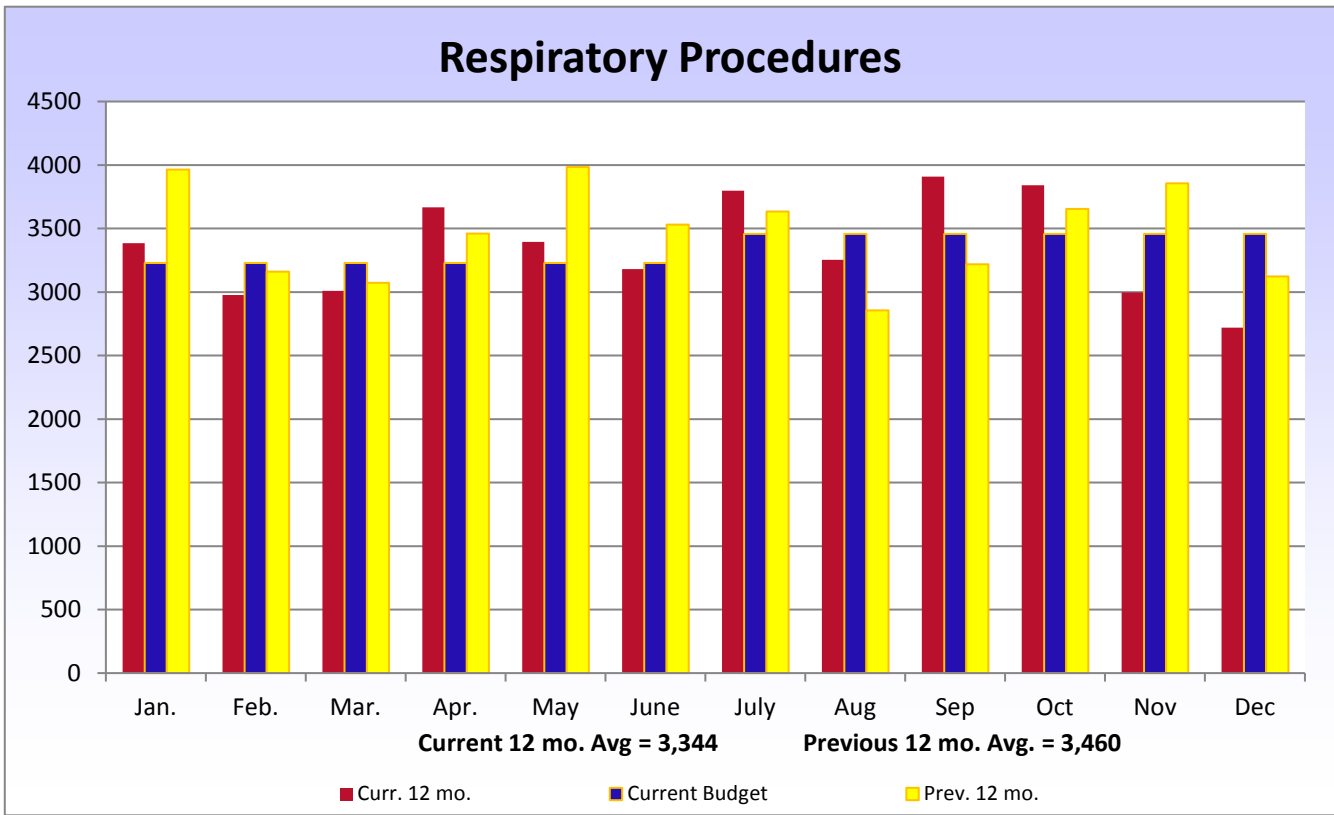
**Curr. 12 mo. avg. = 62.13**

**Prev. 12 mo. avg. = 63.68**



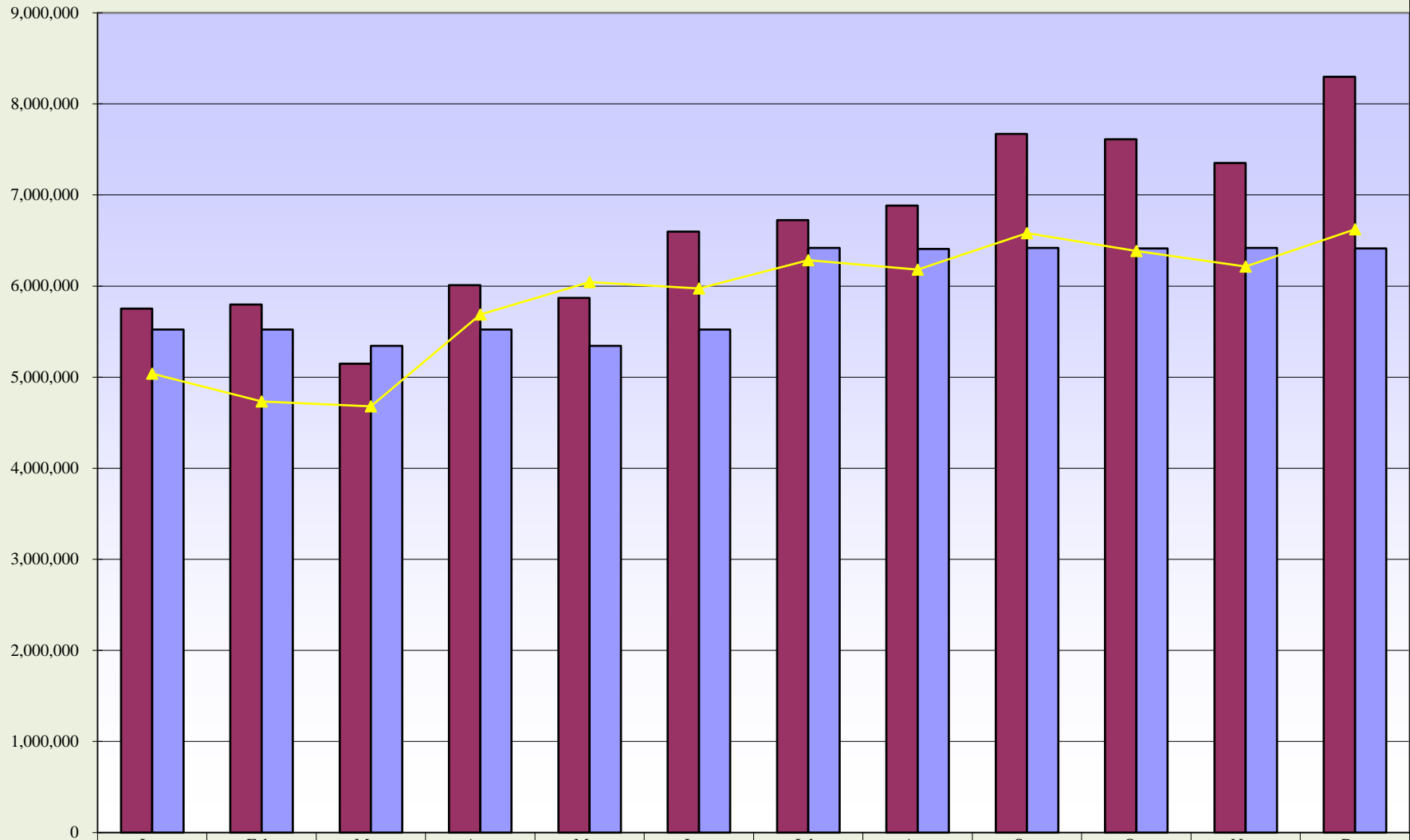


Memorial Hospital of Converse County  
 Respiratory and EKG Procedures  
 Dec. 2015



**Memorial Hospital of Converse County  
Hospital Patient Revenues  
Dec. 2015**

**Hospital Patient Revenues**



**Curr. 12 mo. avg. = \$6,642,985**

**Prev. 12 mo. avg. = \$5,868,740**



**Memorial Hospital of Converse County  
Financial and Statistical Highlights  
Dec. 2015**

<b>Patient Volumes</b>	Page #
IP Daily Census.....	At 6.65 up 0.36 from December 2014 - down 1.95 from November 2015
Surgeries.....	At 124 down 3 from December 2014 - up 14 from November 2015
Radiology Exams.....	At 1,289 up 128 from December 2014 - up 34 from November 2015
Laboratory Tests.....	At 28,811 down 1128 from December 2014 - down 217 from November 2015
Emer. Rm. Visits.....	At 446 up 84 from December 2014 - down 50 from November 2015

**Income Statement**

Gross Patient Revenue for the month was \$8,296,000 compared to \$6,623,000 last December and \$7,350,000 last month. Net Income for December is \$400,000 compared to \$152,000 last year and \$306,000 last month. 15

Monthly Revenue - over budget by \$1,882,000

The departments that are under budget by \$10,000 or more are as follows:

ICU - 17,000

Deductions From Revenue - Over budget by \$733,000

Monthly Expense Variances - Over budget by \$1,109,000

Salaries & Wages - 300,000

Benefits - 224,000

Health Insurance Payments

Supplies - 382,000

Radiology - 6,000

Nuc Med - 21,000

Lab - 9,500

Pharmacy - 99,000

Arbor Café - 42,000

Surgery - 102,000

Sterile Processing - 5,000

Physician Services - 59,000

Administration - 4,000

IS - 4,900

Central Supply - 4,300

Mocha Molly's - 11,000

Environmental Serv - 8,600

Public Relations - 4,000

Lease & Rentals - 15,000

Pharmacy - 7,000

Cardiopulmonary - 6,500

Central Supply - 9,800

Other Expenses - 50,000

Practitioners Collection - 4,100

Admin Postage - 5,700

Bus Office Collection - 4,500

Housing & Storage - 9,200

Pub Relations - 35,000

Travel & Education - 1,700

Ambulance - 2,900

Podiatry - 4,000

Physician Serv - 2,000

Maintenance & Repair - 45,000

Ambulance - 1,700

Radiology - 1,500

MRI - 1,600

Nuc Med - 7,000

Ultrasound - 1,700

Facilities - 11,000

Housing & Storage - 21,000

Professional Fees - 8,000

Cardiopulmonary - 6,700

Physical Therapy - 16,000

Purchased Services - 23,000

Arbot Café - 8,000

Administration - 5,000

E-Care - 14,000

Facilities - 6,400

Quality - 7,300

Utilities - 14,000

Podiatry - 1,200

Physician Services - 3,400

Administration - 3,900

Facilities - 4,500

Indigent Care - 128,000

Increased Bad Debt

**Cash Status**

Cash balances as of December 31, 2015 are \$13,592,896.

This equates to 85 days of expenses on hand.

**Accounts Receivable**

Net Accounts Receivable days are at 58.46 days for the end of December compared to 64.15 last year and 61.26 last month.

**Memorial Hospital of Converse County  
Statistics  
For The Period Ended December 31, 2015**

Monthly						Year to Date					
Dec 2015	Dec 2014	Variance From Prior December	Budget	Variance Amount	%	YTD Thru Dec 2015	YTD Thru Dec 2014	Variance From Prior YTD	YTD Budget	Variance Amt.	%
74	86	(12)	74	0	0.0%	489	419	70	444	45	10.1%
3	1	2	5	(2)	-40.0%	25	25	0	30	(5)	-16.7%
77	87	(10)	79	(2)	-2.5%	514	444	70	474	40	8.4%
206	195	11	226	(20)	-8.8%	1,368	1,343	25	1,356	12	0.9%
53	34	19	74	(21)	-28.4%	309	371	(62)	444	(135)	-30.4%
259	229	30	300	(41)	-13.7%	1,677	1,714	(37)	1,800	(123)	-6.8%
12	17	(5)	16	(4)	-25.0%	86	80	6	96	(10)	-10.4%
25	34	(9)	26	(1)	-3.8%	149	142	7	156	(7)	-4.5%
124	127	(3)	98	26	26.5%	669	582	87	588	81	13.8%
3,271	3,241	30	3,478	(207)	-6.0%	19,888	19,279	609	20,868	(980)	-4.7%
466	525	(59)	576	(110)	-19.1%	3,191	3,564	(373)	3,456	(265)	-7.7%
3,737	3,766	(29)	4,054	(317)	-7.8%	23,079	22,843	236	24,324	(1,245)	-5.1%
337	327	10	333	3	1.0%	332	324	8	333	(1)	-0.4%

Financial Ratios	Dec. 2015	Dec. 2014	YTD	US	WY	Misc. Measurements	YTD - 16	YTD - 15	Variance From Prior Year	WY	Variance From WY
Days Cash on Hand	85	108	N/A	69	107	Total Revenue per FTE	\$268,299	\$236,223	\$32,076	\$145,000	\$123,299
Operating Margin	3.34%	-0.08%	4.83%	0.99%	0.77%	Contractual Deductions	26.87%	23.96%	2.91%	26.70%	0.17%
Net Margin	6.62%	3.13%	8.22%	2.51%	6.79%	Inpatient Revenue %	31.75%	35.09%	-3.34%	31.41%	0.34%
Current Ratio	5.16	6.05	N/A	2.29	3.89	Outpatient Revenue %	68.25%	64.91%	3.34%	66.90%	1.35%
Gross A/R Days	54.75	70.33		54.20	57.94	Average Length of Stay	2.78	2.29	0.49	3.30	(0.52)
Net A/R Days	58.46	64.15				Medicare Inp. Payer Mix	32.90%	33.10%	-0.20%	31.00%	1.90%
FTEs per Adjusted Occupied Bed - Excluding MOB			10.48	With MOB	11.34	Average I/P Daily Census	7.43	7.30	0.13	3.50	3.93
Medicare Rural Hospital Flexibility Program Monitoring Team - US CAH Median-2013						Salaries to Total Expense	46.03%	48.29%	-2.26%	46.32%	-0.29%
Medicare Rural Hospital Flexibility Program Monitoring Team -WY CAH Medium-2013						Benefits as % of Salaries	24.44%	21.31%	3.13%		

**Memorial Hospital of Converse County**  
**Balance Sheet**  
**December 31, 2015**

	<b>December 2015</b>	<b>December 2014</b>
<b>ASSETS</b>		
<b>CURRENT ASSETS</b>		
Cash On Hand And In Banks	\$5,940,767	\$5,194,210
Certificates Of Deposit - Unrestricted	139,715	1,731,695
<b>Total Cash Assets</b>	<b>\$6,080,483</b>	<b>\$6,925,905</b>
<b>Assets Whose Use is Restricted</b>		
Bond Reserve Fund - (Bond Covenant Requirement)	0	628,360
Bond Payment Fund-(Bond Covenant Requirement)	0	158,899
Certificates of Deposit Securing Loan	7,500,000	5,000,000
Reserve Account - (Patient Contracts)	12,413	12,413
Additional (Bond Covenant Requirement)	0	2,650,648
<b>Total Restricted Assets</b>	<b>\$7,512,413</b>	<b>\$8,450,320</b>
Accounts Receivable (Gross)	13,882,335	14,874,985
Uncollectable Accts. & Contratual. Adj.	(3,202,636)	(4,861,077)
<b>Net Patient Accounts</b>	<b>\$10,679,699</b>	<b>\$10,013,908</b>
Due From Physicians	104,153	107,988
Inventories Of Supplies	968,855	1,070,302
Other Current Assets	2,591,020	3,019,234
<b>Total Current Assets</b>	<b>\$27,936,623</b>	<b>\$29,587,657</b>
<b>LAND, BUILDING AND EQUIPMENT, net</b>	32,260,180	31,118,752
<b>OTHER ASSETS</b>		
Investment - Big Country Rehab	162,731	283,888
Investment - Powder River Imaging	0	7,762
<b>Total Other Assets</b>	<b>\$162,731</b>	<b>\$291,650</b>
<b>Total Assets</b>	<b>\$60,359,533</b>	<b>\$60,998,059</b>
<b>LIABILITIES AND FUND EQUITY</b>		
<b>CURRENT LIABILITIES</b>		
Accounts Payable	1,233,182	1,878,083
Accrued Bond Interest/Principal Payable	0	(72,945)
Accrued Salaries	2,504,591	2,241,415
Accrued Taxes And Deductions	518,080	580,774
Current Portion Of Capital Leases	144,589	253,146
Current Portion of CD Secured Note	1,000,000	0
Contingent Liability-(Patient Contracts)	12,413	12,413
<b>Total Current Liabilities</b>	<b>\$5,412,856</b>	<b>\$4,892,886</b>
<b>OTHER LIABILITIES</b>		
Revenue Bonds Payable	0	6,308,504
Long Term EIB Accrual	92,545	83,484
Deferred Loss On Early Retirement Of Bonds	(455,014)	(587,840)
Discount On Bonds	0	(30,494)
Medicare Cost Report Settlement	1,696,824	95,000
Long Term CD Secured Note Obligations	6,500,000	0
Long Term Capital Lease Obligations	911,620	5,943,927
<b>Total Other Liabilities</b>	<b>\$8,745,974</b>	<b>\$11,812,581</b>
<b>Total Liabilities</b>	<b>\$14,158,830</b>	<b>\$16,705,467</b>
<b>FUND EQUITY</b>		
Fund Balance	43,482,683	42,126,062
Net Income	2,718,021	2,166,530
<b>Total Fund Balance</b>	<b>\$46,200,703</b>	<b>\$44,292,592</b>
<b>Total Liabilities And Fund Equity</b>	<b>\$60,359,533</b>	<b>\$60,998,059</b>

**Cash Flow Statement for December 2015 and FYTD 2016**

<b>Cash Flow From Operations</b>	<b><u>Dec. 2015</u></b>	<b><u>FYTD 2016</u></b>
Net Earnings/(Loss)	\$400,699	\$2,718,021
<b><u>Additions/(Subtractions) to Cash</u></b>		
Depreciation/Non-cash Interest	362,097	2,187,649
Decrease/(Increase) in Accounts Receivable	1,203,417	(50,763)
(Decrease)/Increase in Accounts Payable	(179,631)	(656,585)
Decrease/(Increase) in Inventory	12,265	43,480
<b>Net Cash Flow From Operations</b>	<u>\$1,798,847</u>	<u>\$4,241,802</u>
 <b>Cash Flow from Capital Purchases</b>		
Equipment, Fixed Assets	(529,974)	(2,586,381)
Loan Advance	0	0
 <b>Cash Flow from Financing</b>		
Notes Payable	<u>21,851</u>	<u>(913,246)</u>
 <b>Cash Flow for the Month Ending:      Dec 2015</b>	<u><u>\$1,290,724</u></u>	<u><u>\$742,175</u></u>

---